

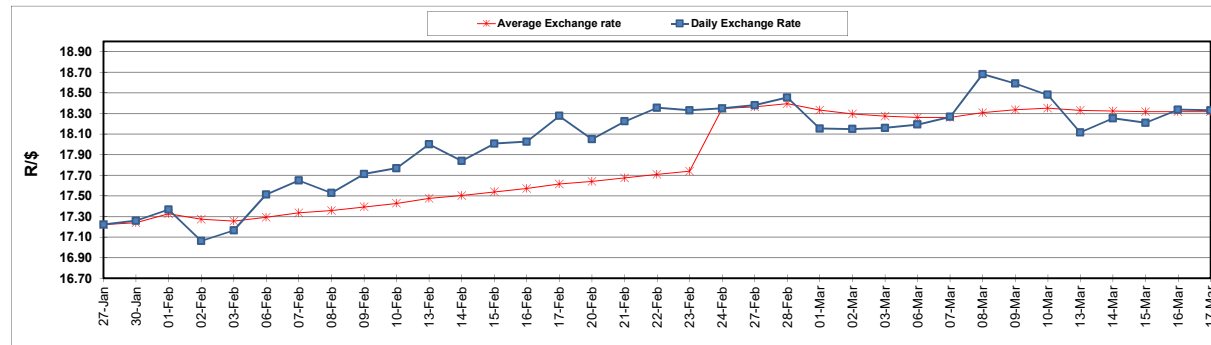
South African Cents per Litre (SA c/l)	PETROL 95 ULP	PETROL 93 ULP & LRP	DIESEL 0.05%	DIESEL 0.005%	ILL. PAR.
GAUTENG PUMP PRICE AS FROM 01/03/2023	2,295.000	2,265.000	-	-	-
WHOLESALE PRICE AS FROM 01/03/2023	-	-	2,162.410	2,171.810	1,596.958
SINGLE NATIONAL MAXIMUM RETAIL PRICE	-	-	-	-	2,104.000
BASIC FUEL PRICE - 17/03/2023	1,188.902	1,155.895	1,223.729	1,233.529	1,177.312
PRESS RELEASE CONTRIBUTION TO BFP 01/03/2023 - 17/03/2023	1,244.850	1,214.850	1,340.630	1,350.030	1,378.128
UNIT OVER/(UNDER) RECOVERY - 17/03/2023	55.948	58.955	116.901	116.501	200.816
AVERAGE BASIC FUEL PRICE 24/02/2023 - 17/03/2023	1,230.489	1,199.673	1,293.107	1,301.137	1,280.196
AVERAGE UNIT OVER/(UNDER) RECOVERY 24/02/2023 - 17/03/2023	(8.630)	(7.814)	42.648	43.831	95.495

ANALYSIS MOVEMENT OF AVERAGE OVER/(UNDER) RECOVERY

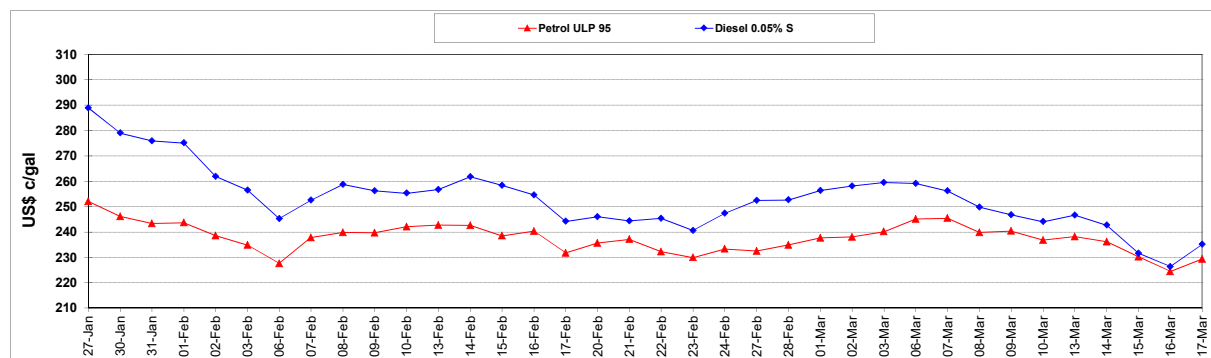
	PETROL 95	PETROL 93	DIESEL 0.05%	DIESEL 0.005%	ILL. PAR.
- MOVEMENT IN INTERNATIONAL PRODUCT PRICES	30.203	30.046	83.457	84.893	135.896
- MOVEMENT IN EXCHANGE RATE	(38.833)	(37.860)	(40.809)	(41.062)	(40.401)
AVERAGE UNIT OVER/(UNDER) RECOVERY 24/02/2023 - 17/03/2023	(8.630)	(7.814)	42.648	43.831	95.495

R/\$ EXCHANGE RATE - (R/\$18.3300 - 17/03/2023)

EXCHANGE RATE USED IN BASIC FUEL PRICE



INTERNATIONAL PRODUCT PRICES OF BASKET USED IN BASIC FUEL PRICE



BASIC FUEL PRICE IN SA CENTS PER LITRE

