

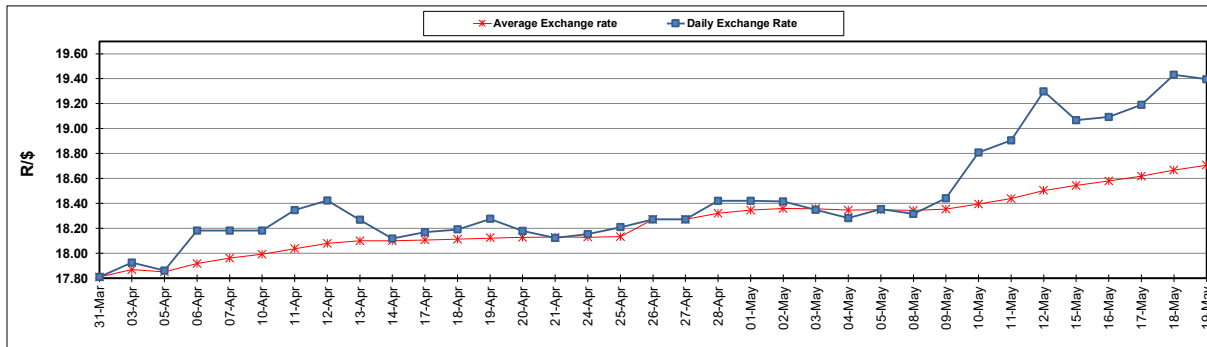
South African Cents per Litre (SA c/l)	PETROL 95 ULP	PETROL 93 ULP & LRP	DIESEL 0.05%	DIESEL 0.005%	ILL. PAR.
GAUTENG PUMP PRICE AS FROM 03/05/2023	2 334.000	2 301.000	-	-	-
WHOLESALE PRICE AS FROM 03/05/2023	-	-	2 015.290	2 049.690	1 439.058
SINGLE NATIONAL MAXIMUM RETAIL PRICE	-	-	-	-	1 859.000
BASIC FUEL PRICE - 19/05/2023	1 266.183	1 228.225	1 185.396	1 218.454	1 209.510
PRESS RELEASE CONTRIBUTION TO BFP 03/05/2023 - 19/05/2023	1 295.970	1 262.970	1 205.630	1 240.030	1 206.128
UNIT OVER/(UNDER) RECOVERY - 19/05/2023	29.787	34.745	20.234	21.576	(3.382)
AVERAGE BASIC FUEL PRICE 26/04/2023 - 19/05/2023	1 181.258	1 148.462	1 109.028	1 142.609	1 153.700
AVERAGE UNIT OVER/(UNDER) RECOVERY 26/04/2023 - 19/05/2023	100.118	99.914	112.713	106.310	61.595

ANALYSIS MOVEMENT OF AVERAGE OVER/(UNDER) RECOVERY

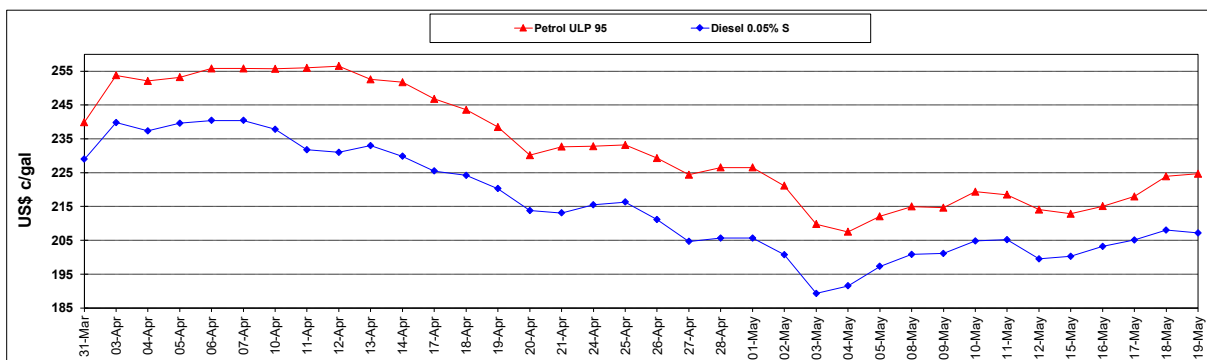
	PETROL 95	PETROL 93	DIESEL 0.05%	DIESEL 0.005%	ILL. PAR.
- MOVEMENT IN INTERNATIONAL PRODUCT PRICES	136.345	135.135	146.725	141.352	96.977
- MOVEMENT IN EXCHANGE RATE	(36.227)	(35.221)	(34.012)	(35.042)	(35.382)
AVERAGE UNIT OVER/(UNDER) RECOVERY 26/04/2023 - 19/05/2023	100.118	99.914	112.713	106.310	61.595

R/\$ EXCHANGE RATE - (R/\$19.3960 - 19/05/2023)

EXCHANGE RATE USED IN BASIC FUEL PRICE



INTERNATIONAL PRODUCT PRICES OF BASKET USED IN BASIC FUEL PRICE



BASIC FUEL PRICE IN SA CENTS PER LITRE

