

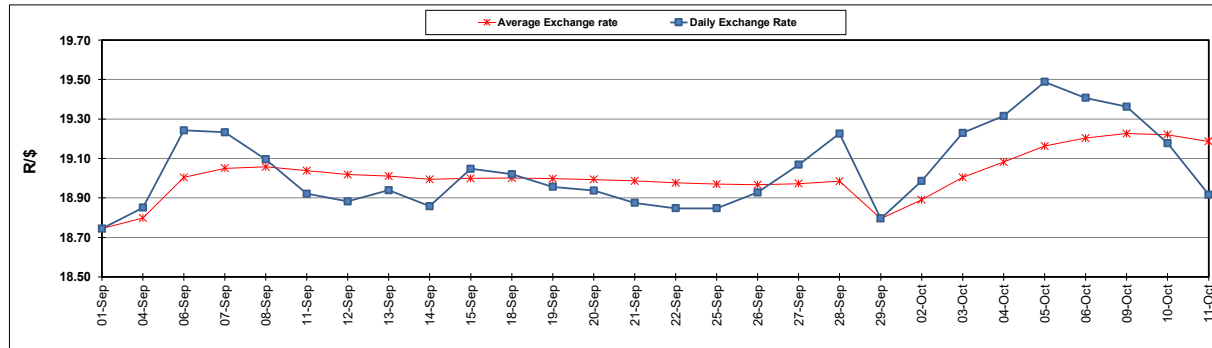
South African Cents per Litre (SA c/l)	PETROL 95 ULP	PETROL 93 ULP & LRP	DIESEL 0.05%	DIESEL 0.005%	ILL. PAR.
GAUTENG PUMP PRICE AS FROM 04/10/2023	2,568.000	2,522.000	-	-	-
WHOLESALE PRICE AS FROM 04/10/2023	-	-	2,501.990	2,522.390	1,892.058
SINGLE NATIONAL MAXIMUM RETAIL PRICE	-	-	-	-	2,463.000
BASIC FUEL PRICE - 11/10/2023	1,257.506	1,216.725	1,490.231	1,513.012	1,489.129
PRESS RELEASE CONTRIBUTION TO BFP 03/10/2023 - 11/10/2023	1,495.270	1,449.270	1,662.630	1,683.030	1,659.128
UNIT OVER/(UNDER) RECOVERY - 11/10/2023	237.764	232.545	172.399	170.018	169.999
AVERAGE BASIC FUEL PRICE 29/09/2023 - 11/10/2023	1,287.276	1,246.983	1,549.058	1,577.079	1,550.649
AVERAGE UNIT OVER/(UNDER) RECOVERY 29/09/2023 - 11/10/2023	180.227	176.520	58.239	51.617	58.146

### ANALYSIS MOVEMENT OF AVERAGE OVER/(UNDER) RECOVERY

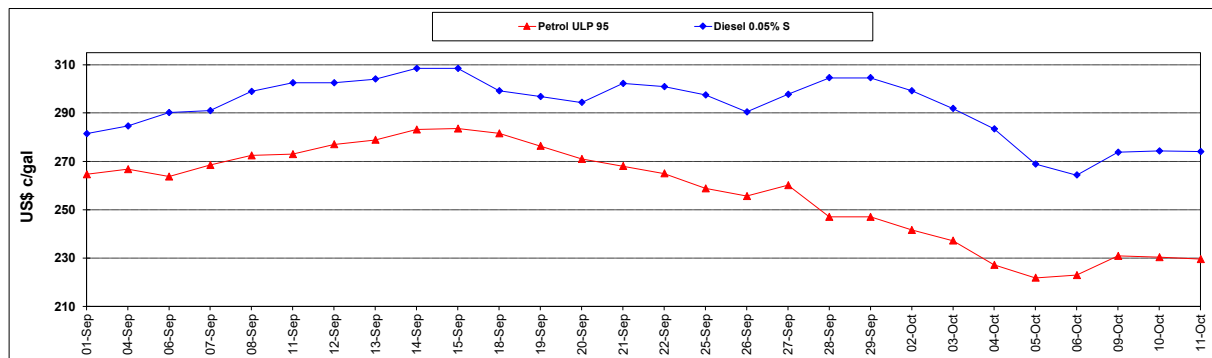
	PETROL 95	PETROL 93	DIESEL 0.05%	DIESEL 0.005%	ILL. PAR.
- MOVEMENT IN INTERNATIONAL PRODUCT PRICES	193.753	189.622	74.515	68.189	74.439
- MOVEMENT IN EXCHANGE RATE	(13.526)	(13.102)	(16.276)	(16.571)	(16.293)
AVERAGE UNIT OVER/(UNDER) RECOVERY 29/09/2023 - 11/10/2023	180.227	176.520	58.239	51.617	58.146

### R/\$ EXCHANGE RATE - (R/\$18.9163 - 11/10/2023)

#### EXCHANGE RATE USED IN BASIC FUEL PRICE



#### INTERNATIONAL PRODUCT PRICES OF BASKET USED IN BASIC FUEL PRICE



#### BASIC FUEL PRICE IN SA CENTS PER LITRE

