

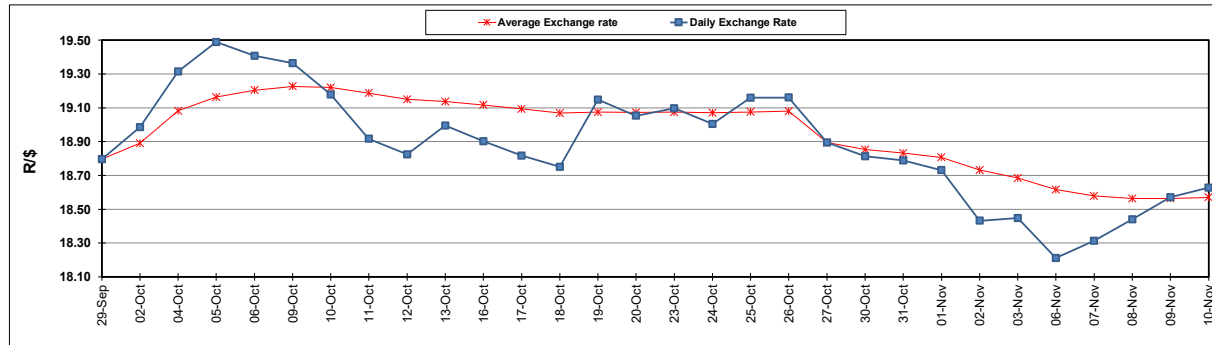
South African Cents per Litre (SA c/l)	PETROL 95 ULP	PETROL 93 ULP & LRP	DIESEL 0.05%	DIESEL 0.005%	ILL. PAR.
GAUTENG PUMP PRICE AS FROM 01/11/2023	2,390.000	2,344.000	-	-	-
WHOLESALE PRICE AS FROM 01/11/2023	-	-	2,416.910	2,440.310	1,795.058
SINGLE NATIONAL MAXIMUM RETAIL PRICE	-	-	-	-	2,333.000
BASIC FUEL PRICE - 10/11/2023	1,227.132	1,176.143	1,288.100	1,306.241	1,338.010
PRESS RELEASE CONTRIBUTION TO BFP 01/11/2023 - 10/11/2023	1,295.350	1,249.350	1,555.630	1,579.030	1,562.128
UNIT OVER/(UNDER) RECOVERY - 10/11/2023	68.218	73.207	267.530	272.789	224.118
AVERAGE BASIC FUEL PRICE 27/10/2023 - 10/11/2023	1,231.495	1,188.691	1,379.225	1,396.316	1,415.001
AVERAGE UNIT OVER/(UNDER) RECOVERY 27/10/2023 - 10/11/2023	118.379	115.182	205.587	211.078	173.582

ANALYSIS MOVEMENT OF AVERAGE OVER/(UNDER) RECOVERY

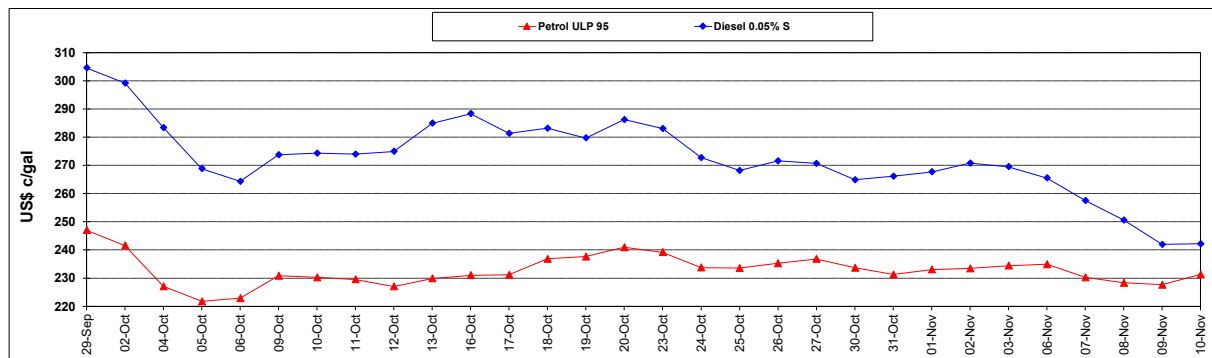
	PETROL 95	PETROL 93	DIESEL 0.05%	DIESEL 0.005%	ILL. PAR.
- MOVEMENT IN INTERNATIONAL PRODUCT PRICES	84.571	82.550	167.723	172.745	134.736
- MOVEMENT IN EXCHANGE RATE	33.808	32.633	37.864	38.333	38.846
AVERAGE UNIT OVER/(UNDER) RECOVERY 27/10/2023 - 10/11/2023	118.379	115.182	205.587	211.078	173.582

R/\$ EXCHANGE RATE - (R/\$18.6275 - 10/11/2023)

EXCHANGE RATE USED IN BASIC FUEL PRICE



INTERNATIONAL PRODUCT PRICES OF BASKET USED IN BASIC FUEL PRICE



BASIC FUEL PRICE IN SA CENTS PER LITRE

