

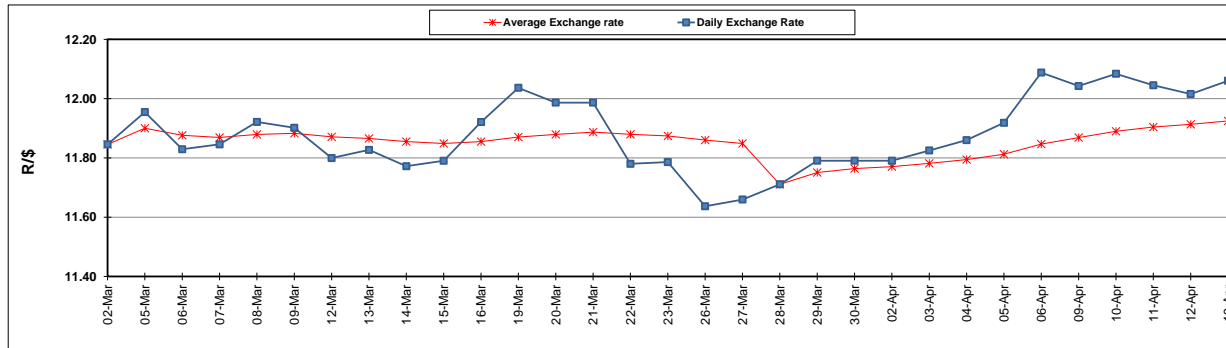
	PETROL 95 ULP	PETROL 93 ULP & LRP	DIESEL 0.05%	DIESEL 0.005%	ILL. PAR.
GAUTENG PUMP PRICE (SA c/l) AS FROM 07/03/2018	1 448.000	1 423.000	-	-	-
WHOLESALE PRICE (SA c/l) AS FROM 07/03/2018	-	-	1 274.830	1 280.230	793.088
SINGLE NATIONAL MAXIMUM RETAIL PRICE	-	-	-	-	1 026.000
BASIC FUEL PRICE - 13/04/2018 (SA c/l)	659.277	641.335	677.651	682.866	694.184
PRESS RELEASE CONTRIBUTION TO BFP 04/04/2018 - 13/04/2018 (SA c/l)	596.070	581.070	601.630	607.030	620.128
UNIT OVER/(UNDER) RECOVERY - 13/04/2018 (SA c/l)	(63.207)	(60.265)	(76.021)	(75.836)	(74.056)
AVERAGE BASIC FUEL PRICE 28/03/2018 - 13/04/2018	633.696	618.347	648.253	653.457	660.287
AVERAGE UNIT OVER/(UNDER) RECOVERY 28/03/2018 - 13/04/2018	(41.433)	(39.931)	(47.777)	(47.581)	(38.236)

ANALYSIS MOVEMENT OF AVERAGE OVER/(UNDER) RECOVERY

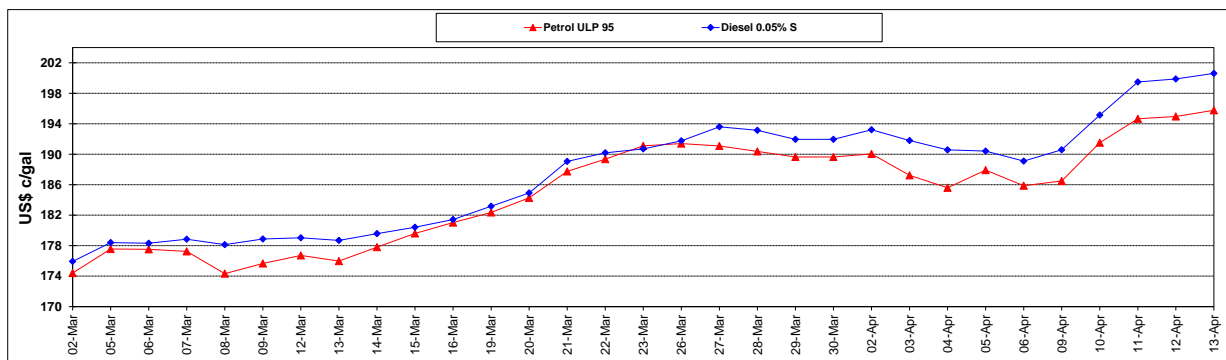
	PETROL 95	PETROL 93	DIESEL 0.05%	DIESEL 0.005%	ILL. PAR.
- MOVEMENT IN INTERNATIONAL PRODUCT PRICES	(37.406)	(36.000)	(43.656)	(43.427)	(34.039)
- MOVEMENT IN EXCHANGE RATE	(4.028)	(3.931)	(4.121)	(4.154)	(4.197)
AVERAGE UNIT OVER/(UNDER) RECOVERY 28/03/2018 - 13/04/2018	(41.433)	(39.931)	(47.777)	(47.581)	(38.236)

R/\$ EXCHANGE RATE - (R/\$12.0603 - 13/04/2018)

EXCHANGE RATE USED IN BASIC FUEL PRICE



INTERNATIONAL PRODUCT PRICES OF BASKET USED IN BASIC FUEL PRICE



BASIC FUEL PRICE IN SA CENTS PER LITRE

