

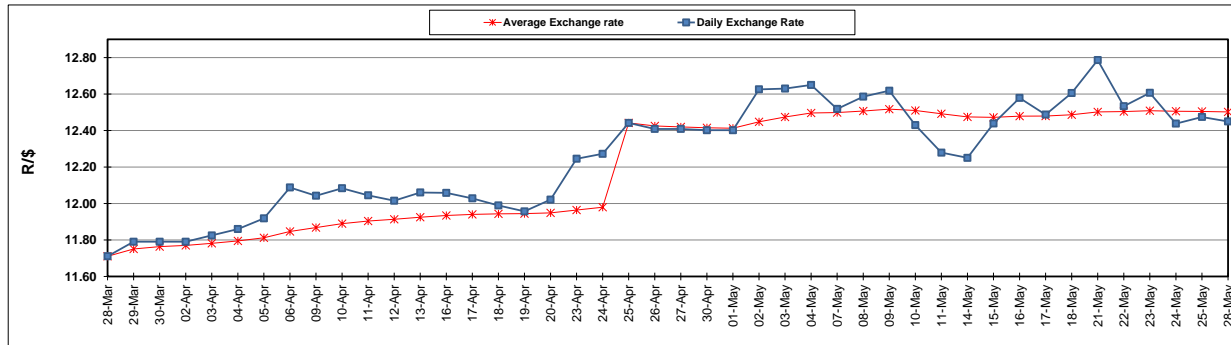
	PETROL 95 ULP	PETROL 93 ULP & LRP	DIESEL 0.05%	DIESEL 0.005%	ILL. PAR.
GAUTENG PUMP PRICE (SA c/l) AS FROM 02/05/2018	1 497.000	1 472.000	-	-	-
WHOLESALE PRICE (SA c/l) AS FROM 02/05/2018	-	-	1 333.830	1 338.230	845.088
SINGLE NATIONAL MAXIMUM RETAIL PRICE	-	-	-	-	1 089.000
BASIC FUEL PRICE - 28/05/2018 (SA c/l)	718.861	706.474	732.309	738.798	735.094
PRESS RELEASE CONTRIBUTION TO BFP 02/05/2018 - 28/05/2018 (SA c/l)	645.070	630.070	660.630	665.030	672.128
UNIT OVER/(UNDER) RECOVERY - 28/05/2018 (SA c/l)	(73.791)	(76.404)	(71.679)	(73.768)	(62.966)
AVERAGE BASIC FUEL PRICE 25/04/2018 - 28/05/2018	718.056	705.356	734.781	740.667	743.905
AVERAGE UNIT OVER/(UNDER) RECOVERY 25/04/2018 - 28/05/2018	(83.194)	(85.494)	(86.443)	(87.720)	(82.611)

ANALYSIS MOVEMENT OF AVERAGE OVER/(UNDER) RECOVERY

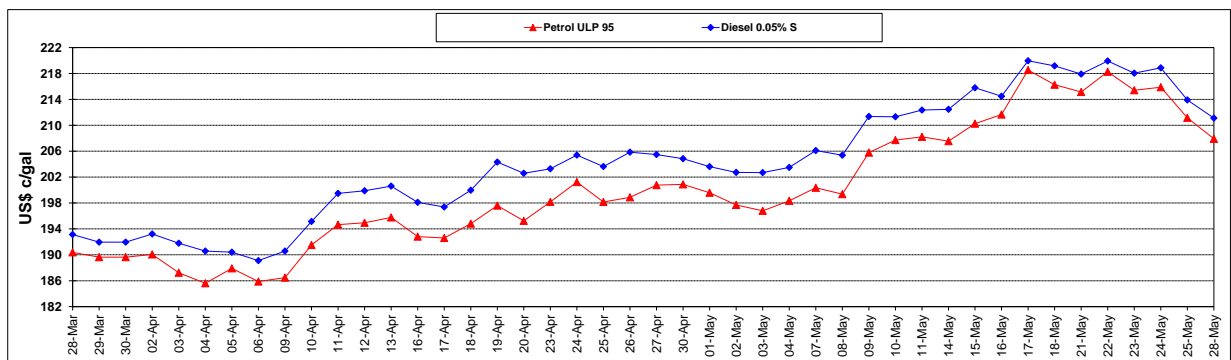
	PETROL 95	PETROL 93	DIESEL 0.05%	DIESEL 0.005%	ILL. PAR.
- MOVEMENT IN INTERNATIONAL PRODUCT PRICES	(53.190)	(56.021)	(55.740)	(56.771)	(51.526)
- MOVEMENT IN EXCHANGE RATE	(30.004)	(29.473)	(30.703)	(30.949)	(31.084)
AVERAGE UNIT OVER/(UNDER) RECOVERY 25/04/2018 - 28/05/2018	(83.194)	(85.494)	(86.443)	(87.720)	(82.611)

R/\$ EXCHANGE RATE - (R/\$12.4500 - 28/05/2018)

EXCHANGE RATE USED IN BASIC FUEL PRICE



INTERNATIONAL PRODUCT PRICES OF BASKET USED IN BASIC FUEL PRICE



BASIC FUEL PRICE IN SA CENTS PER LITRE

