

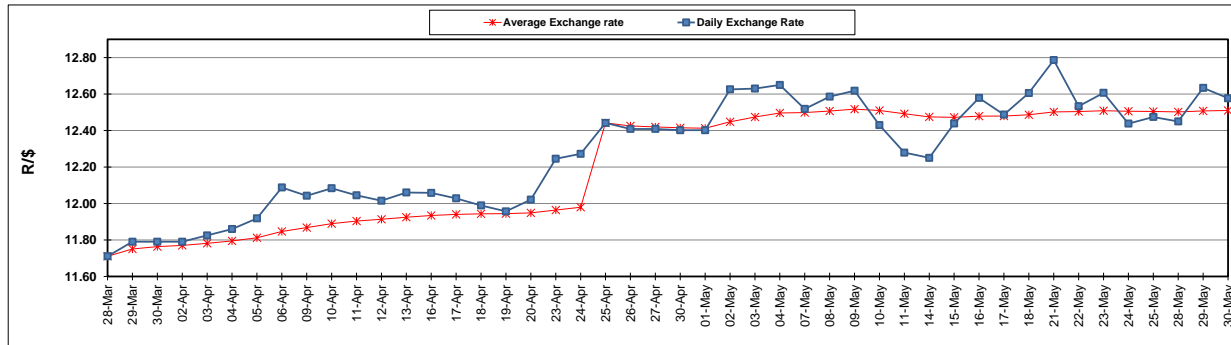
	PETROL 95 ULP	PETROL 93 ULP & LRP	DIESEL 0.05%	DIESEL 0.005%	ILL. PAR.
GAUTENG PUMP PRICE (SA c/l) AS FROM 02/05/2018	1 497.000	1 472.000	-	-	-
WHOLESALE PRICE (SA c/l) AS FROM 02/05/2018	-	-	1 333.830	1 338.230	845.088
SINGLE NATIONAL MAXIMUM RETAIL PRICE	-	-	-	-	1 089.000
BASIC FUEL PRICE - 30/05/2018 (SA c/l)	722.582	710.119	742.659	747.955	746.540
PRESS RELEASE CONTRIBUTION TO BFP 02/05/2018 - 30/05/2018 (SA c/l)	645.070	630.070	660.630	665.030	672.128
UNIT OVER/(UNDER) RECOVERY - 30/05/2018 (SA c/l)	(77.512)	(80.049)	(82.029)	(82.925)	(74.412)
AVERAGE BASIC FUEL PRICE 25/04/2018 - 30/05/2018	718.476	705.790	735.202	741.071	743.930
AVERAGE UNIT OVER/(UNDER) RECOVERY 25/04/2018 - 30/05/2018	(82.829)	(85.143)	(85.918)	(87.195)	(81.802)

ANALYSIS MOVEMENT OF AVERAGE OVER/(UNDER) RECOVERY

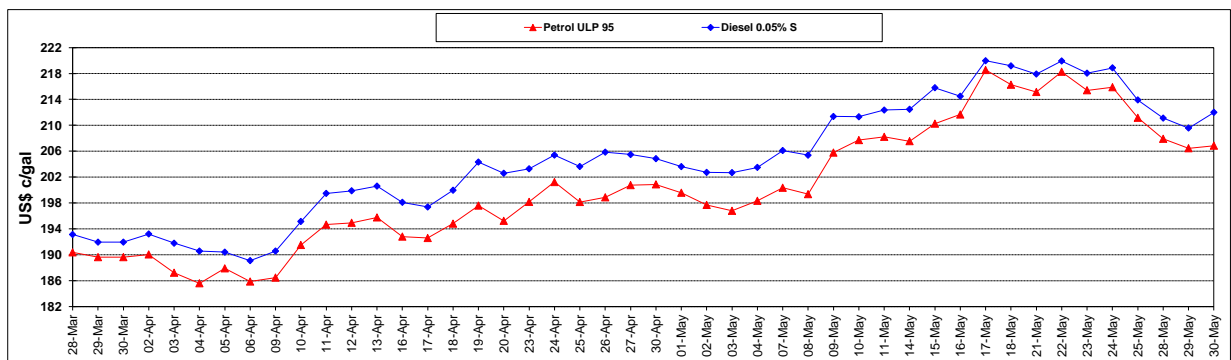
	PETROL 95	PETROL 93	DIESEL 0.05%	DIESEL 0.005%	ILL. PAR.
- MOVEMENT IN INTERNATIONAL PRODUCT PRICES	(52.367)	(55.219)	(54.747)	(55.775)	(50.261)
- MOVEMENT IN EXCHANGE RATE	(30.462)	(29.924)	(31.171)	(31.420)	(31.541)
AVERAGE UNIT OVER/(UNDER) RECOVERY 25/04/2018 - 30/05/2018	(82.829)	(85.143)	(85.918)	(87.195)	(81.802)

R/\$ EXCHANGE RATE - (R/\$12.5773 - 30/05/2018)

EXCHANGE RATE USED IN BASIC FUEL PRICE



INTERNATIONAL PRODUCT PRICES OF BASKET USED IN BASIC FUEL PRICE



BASIC FUEL PRICE IN SA CENTS PER LITRE

