

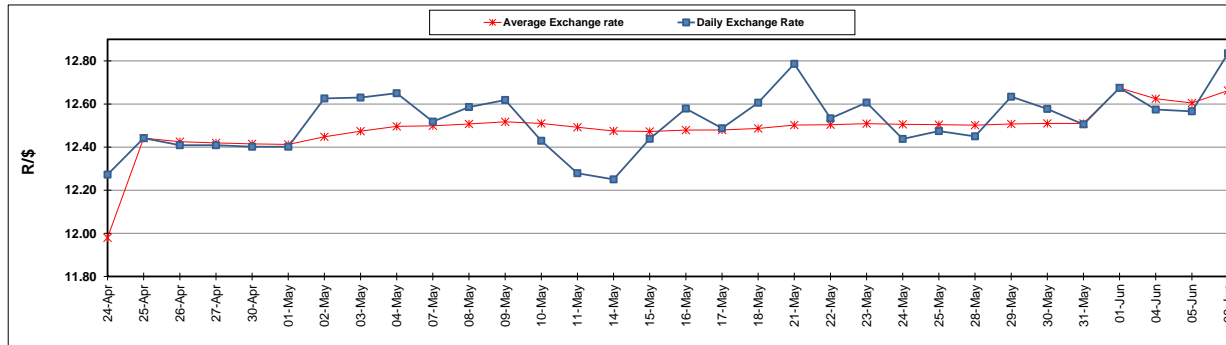
	PETROL 95 ULP	PETROL 93 ULP & LRP	DIESEL 0.05%	DIESEL 0.005%	ILL. PAR.
GAUTENG PUMP PRICE (SA c/l) AS FROM 06/06/2018	1 579.000	1 554.000	-	-	-
WHOLESALE PRICE (SA c/l) AS FROM 06/06/2018	-	-	1 418.830	1 425.230	927.088
SINGLE NATIONAL MAXIMUM RETAIL PRICE	-	-	-	-	1 198.000
BASIC FUEL PRICE - 06/06/2018 (SA c/l)	720.371	709.069	735.569	739.497	736.214
PRESS RELEASE CONTRIBUTION TO BFP 06/06/2018 - 06/06/2018 (SA c/l)	727.070	712.070	745.630	752.030	754.128
UNIT OVER/(UNDER) RECOVERY - 06/06/2018 (SA c/l)	6.699	3.001	10.061	12.533	17.914
AVERAGE BASIC FUEL PRICE 01/06/2018 - 06/06/2018	718.094	705.227	733.311	737.883	734.957
AVERAGE UNIT OVER/(UNDER) RECOVERY 01/06/2018 - 06/06/2018	(52.524)	(54.657)	(51.431)	(51.103)	(42.329)

ANALYSIS MOVEMENT OF AVERAGE OVER/(UNDER) RECOVERY

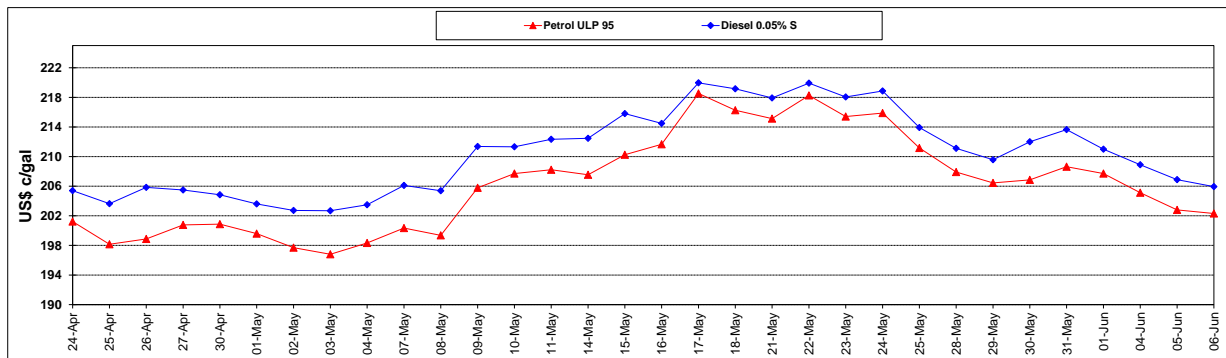
	PETROL 95	PETROL 93	DIESEL 0.05%	DIESEL 0.005%	ILL. PAR.
- MOVEMENT IN INTERNATIONAL PRODUCT PRICES	(43.870)	(46.158)	(42.594)	(42.211)	(33.472)
- MOVEMENT IN EXCHANGE RATE	(8.654)	(8.499)	(8.837)	(8.892)	(8.857)
AVERAGE UNIT OVER/(UNDER) RECOVERY 01/06/2018 - 06/06/2018	(52.524)	(54.657)	(51.431)	(51.103)	(42.329)

R/\$ EXCHANGE RATE - (R/\$12.8350 - 06/06/2018)

EXCHANGE RATE USED IN BASIC FUEL PRICE



INTERNATIONAL PRODUCT PRICES OF BASKET USED IN BASIC FUEL PRICE



BASIC FUEL PRICE IN SA CENTS PER LITRE

