

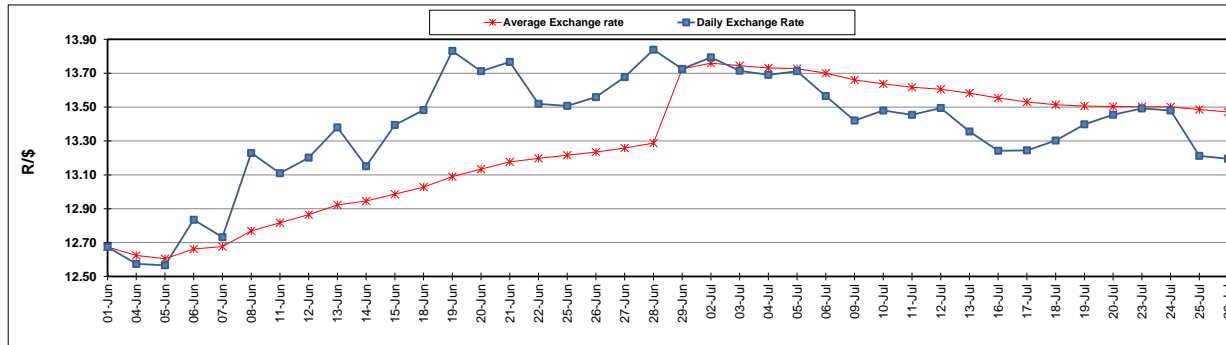
	PETROL 95 ULP	PETROL 93 ULP & LRP	DIESEL 0.05%	DIESEL 0.005%	ILL. PAR.
GAUTENG PUMP PRICE (SA c/l) AS FROM 04/07/2018	1 602.000	1 581.000	-	-	-
WHOLESALE PRICE (SA c/l) AS FROM 04/07/2018	-	-	1 444.830	1 449.230	949.088
SINGLE NATIONAL MAXIMUM RETAIL PRICE	-	-	-	-	1 228.000
BASIC FUEL PRICE - 26/07/2018 (SA c/l)	749.893	736.819	759.317	763.515	769.071
PRESS RELEASE CONTRIBUTION TO BFP 04/07/2018 - 26/07/2018 (SA c/l)	750.070	738.070	771.630	776.030	776.128
UNIT OVER/(UNDER) RECOVERY - 26/07/2018 (SA c/l)	0.177	1.251	12.313	12.515	7.057
AVERAGE BASIC FUEL PRICE 29/06/2018 - 26/07/2018	747.842	736.665	763.158	768.282	776.403
AVERAGE UNIT OVER/(UNDER) RECOVERY 29/06/2018 - 26/07/2018	(1.222)	(2.495)	4.572	4.148	(3.575)

ANALYSIS MOVEMENT OF AVERAGE OVER/(UNDER) RECOVERY

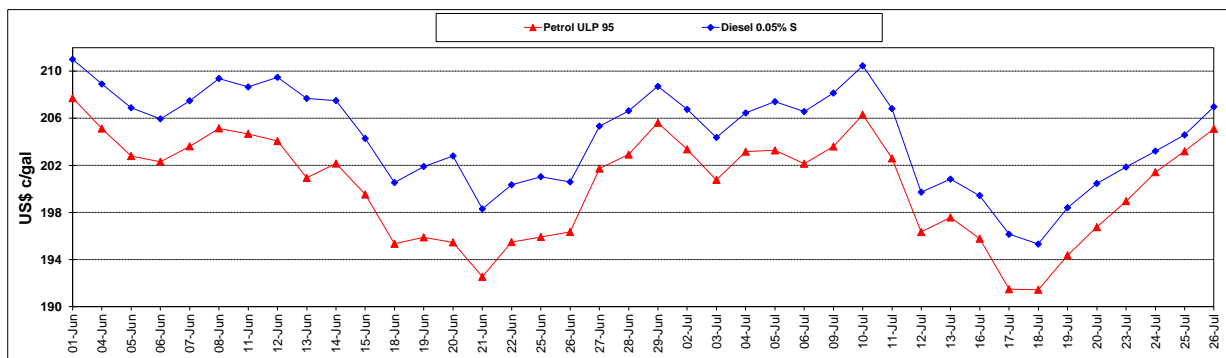
	PETROL 95	PETROL 93	DIESEL 0.05%	DIESEL 0.005%	ILL. PAR.
- MOVEMENT IN INTERNATIONAL PRODUCT PRICES	9.004	7.578	15.007	14.653	7.041
- MOVEMENT IN EXCHANGE RATE	(10.226)	(10.073)	(10.435)	(10.505)	(10.616)
AVERAGE UNIT OVER/(UNDER) RECOVERY 29/06/2018 - 26/07/2018	(1.222)	(2.495)	4.572	4.148	(3.575)

R/\$ EXCHANGE RATE - (R/\$13.1950 - 26/07/2018)

EXCHANGE RATE USED IN BASIC FUEL PRICE



INTERNATIONAL PRODUCT PRICES OF BASKET USED IN BASIC FUEL PRICE



BASIC FUEL PRICE IN SA CENTS PER LITRE

