

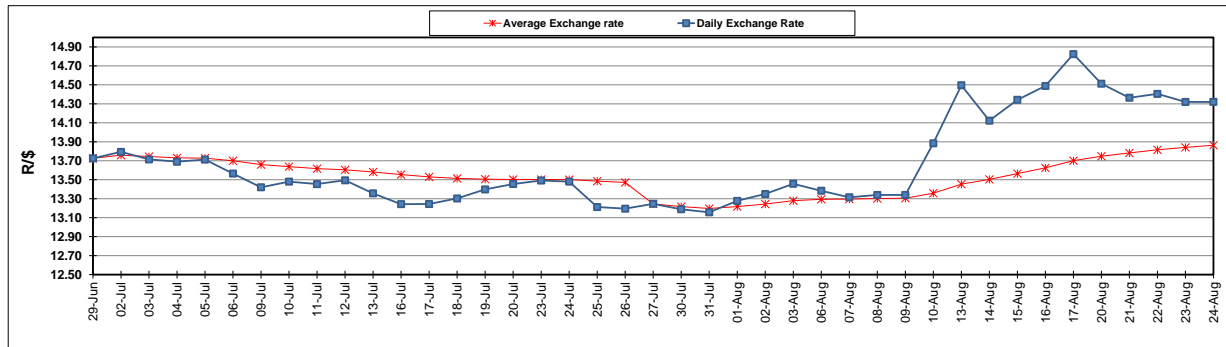
	PETROL 95 ULP	PETROL 93 ULP & LRP	DIESEL 0.05%	DIESEL 0.005%	ILL. PAR.
GAUTENG PUMP PRICE (SA c/l) AS FROM 04/08/2018	1 603.000	1 582.000	-	-	-
WHOLESALE PRICE (SA c/l) AS FROM 04/08/2018	-	-	1 440.830	1 445.230	953.088
SINGLE NATIONAL MAXIMUM RETAIL PRICE	-	-	-	-	1 233.000
BASIC FUEL PRICE - 24/08/2018 (SA c/l)	814.097	799.128	844.843	849.788	837.967
PRESS RELEASE CONTRIBUTION TO BFP 01/08/2018 - 24/08/2018 (SA c/l)	751.070	739.070	767.630	772.030	780.128
UNIT OVER/(UNDER) RECOVERY - 24/08/2018 (SA c/l)	(63.027)	(60.058)	(77.213)	(77.758)	(57.839)
AVERAGE BASIC FUEL PRICE 27/07/2018 - 24/08/2018	771.124	756.938	788.944	793.409	790.652
AVERAGE UNIT OVER/(UNDER) RECOVERY 27/07/2018 - 24/08/2018	(20.197)	(18.011)	(20.743)	(20.807)	(11.095)

### ANALYSIS MOVEMENT OF AVERAGE OVER/(UNDER) RECOVERY

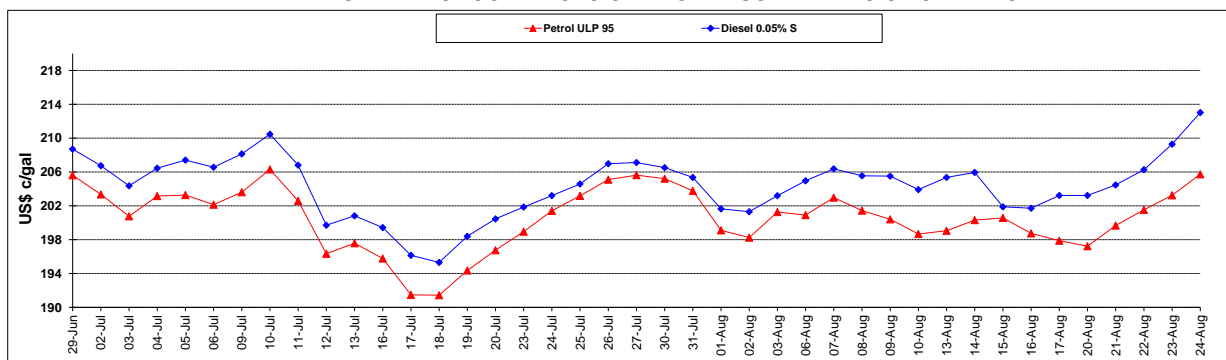
	PETROL 95	PETROL 93	DIESEL 0.05%	DIESEL 0.005%	ILL. PAR.
- MOVEMENT IN INTERNATIONAL PRODUCT PRICES	1.618	3.403	1.576	1.638	11.273
- MOVEMENT IN EXCHANGE RATE	(21.815)	(21.414)	(22.319)	(22.446)	(22.368)
AVERAGE UNIT OVER/(UNDER) RECOVERY 27/07/2018 - 24/08/2018	(20.197)	(18.011)	(20.743)	(20.807)	(11.095)

### R/\$ EXCHANGE RATE - (R/\$14.3208 - 24/08/2018)

#### EXCHANGE RATE USED IN BASIC FUEL PRICE



#### INTERNATIONAL PRODUCT PRICES OF BASKET USED IN BASIC FUEL PRICE



#### BASIC FUEL PRICE IN SA CENTS PER LITRE

