

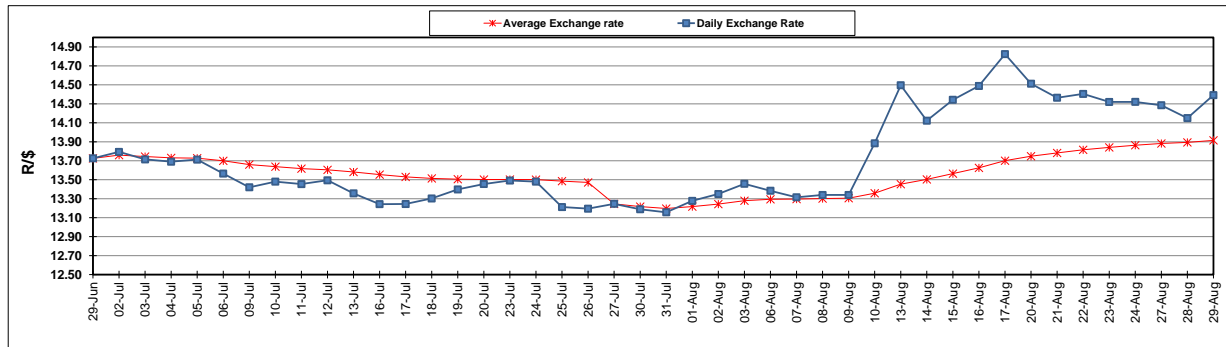
	PETROL 95 ULP	PETROL 93 ULP & LRP	DIESEL 0.05%	DIESEL 0.005%	ILL. PAR.
GAUTENG PUMP PRICE (SA c/l) AS FROM 04/08/2018	1 603.000	1 582.000	-	-	-
WHOLESALE PRICE (SA c/l) AS FROM 04/08/2018	-	-	1 440.830	1 445.230	953.088
SINGLE NATIONAL MAXIMUM RETAIL PRICE	-	-	-	-	1 233.000
BASIC FUEL PRICE - 29/08/2018 (SA c/l)	815.560	802.522	853.363	858.814	846.351
PRESS RELEASE CONTRIBUTION TO BFP 01/08/2018 - 29/08/2018 (SA c/l)	751.070	739.070	767.630	772.030	780.128
UNIT OVER/(UNDER) RECOVERY - 29/08/2018 (SA c/l)	(64.490)	(63.452)	(85.733)	(86.784)	(66.223)
AVERAGE BASIC FUEL PRICE 27/07/2018 - 29/08/2018	776.180	762.046	796.181	800.721	796.710
AVERAGE UNIT OVER/(UNDER) RECOVERY 27/07/2018 - 29/08/2018	(25.235)	(23.101)	(28.051)	(28.191)	(17.082)

### ANALYSIS MOVEMENT OF AVERAGE OVER/(UNDER) RECOVERY

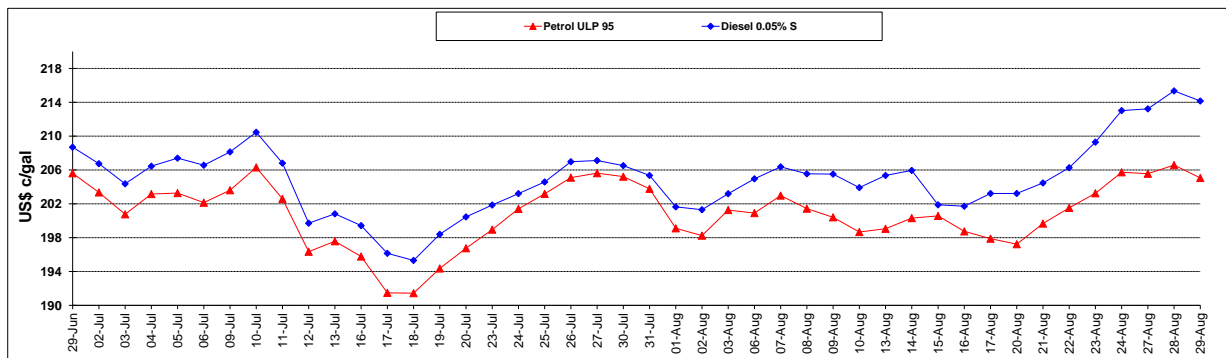
	PETROL 95	PETROL 93	DIESEL 0.05%	DIESEL 0.005%	ILL. PAR.
- MOVEMENT IN INTERNATIONAL PRODUCT PRICES	(0.485)	1.198	(2.664)	(2.659)	8.322
- MOVEMENT IN EXCHANGE RATE	(24.750)	(24.299)	(25.387)	(25.532)	(25.404)
AVERAGE UNIT OVER/(UNDER) RECOVERY 27/07/2018 - 29/08/2018	(25.235)	(23.101)	(28.051)	(28.191)	(17.082)

### R/\$ EXCHANGE RATE - (R/\$14.3923 - 29/08/2018)

#### EXCHANGE RATE USED IN BASIC FUEL PRICE



#### INTERNATIONAL PRODUCT PRICES OF BASKET USED IN BASIC FUEL PRICE



#### BASIC FUEL PRICE IN SA CENTS PER LITRE

