

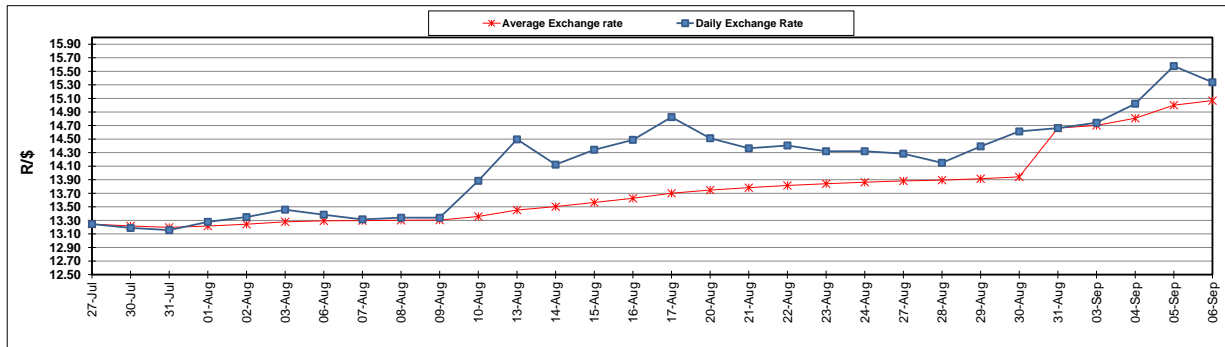
	PETROL 95 ULP	PETROL 93 ULP & LRP	DIESEL 0.05%	DIESEL 0.005%	ILL. PAR.
GAUTENG PUMP PRICE (SA c/l) AS FROM 05/09/2018	1 608.000	1 586.000	-	-	-
WHOLESALE PRICE (SA c/l) AS FROM 05/09/2018	-	-	1 440.830	1 445.230	953.088
SINGLE NATIONAL MAXIMUM RETAIL PRICE	-	-	-	-	1 233.000
BASIC FUEL PRICE - 06/09/2018 (SA c/l)	866.410	854.062	910.510	915.173	903.156
PRESS RELEASE CONTRIBUTION TO BFP 05/09/2018 - 06/09/2018 (SA c/l)	751.170	739.170	767.630	772.030	780.128
UNIT OVER/(UNDER) RECOVERY - 06/09/2018 (SA c/l)	(115.240)	(114.892)	(142.880)	(143.143)	(123.028)
AVERAGE BASIC FUEL PRICE 31/08/2018 - 06/09/2018	865.884	852.617	907.100	911.913	897.510
AVERAGE UNIT OVER/(UNDER) RECOVERY 31/08/2018 - 06/09/2018	(114.774)	(113.507)	(139.470)	(139.883)	(117.382)

ANALYSIS MOVEMENT OF AVERAGE OVER/(UNDER) RECOVERY

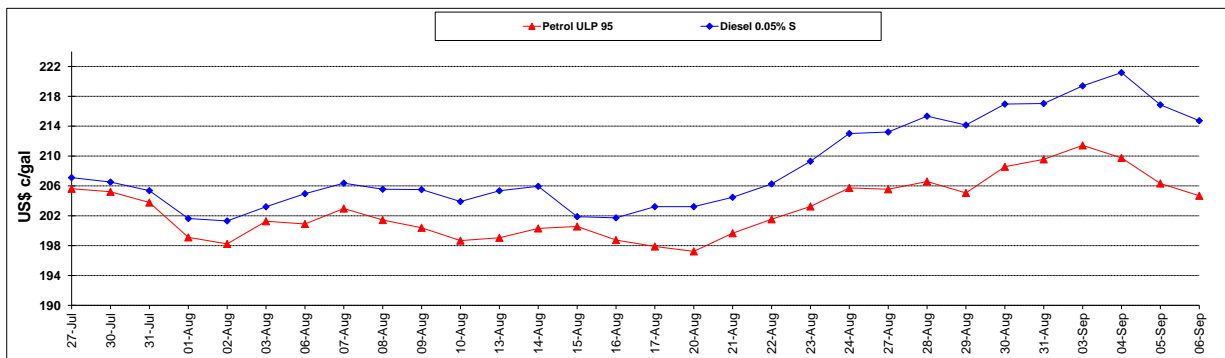
	PETROL 95	PETROL 93	DIESEL 0.05%	DIESEL 0.005%	ILL. PAR.
- MOVEMENT IN INTERNATIONAL PRODUCT PRICES	(50.115)	(49.839)	(71.733)	(71.787)	(50.362)
- MOVEMENT IN EXCHANGE RATE	(64.659)	(63.668)	(67.737)	(68.096)	(67.020)
AVERAGE UNIT OVER/(UNDER) RECOVERY 31/08/2018 - 06/09/2018	(114.774)	(113.507)	(139.470)	(139.883)	(117.382)

R/\$ EXCHANGE RATE - (R/\$15.3390 - 06/09/2018)

EXCHANGE RATE USED IN BASIC FUEL PRICE



INTERNATIONAL PRODUCT PRICES OF BASKET USED IN BASIC FUEL PRICE



BASIC FUEL PRICE IN SA CENTS PER LITRE

