

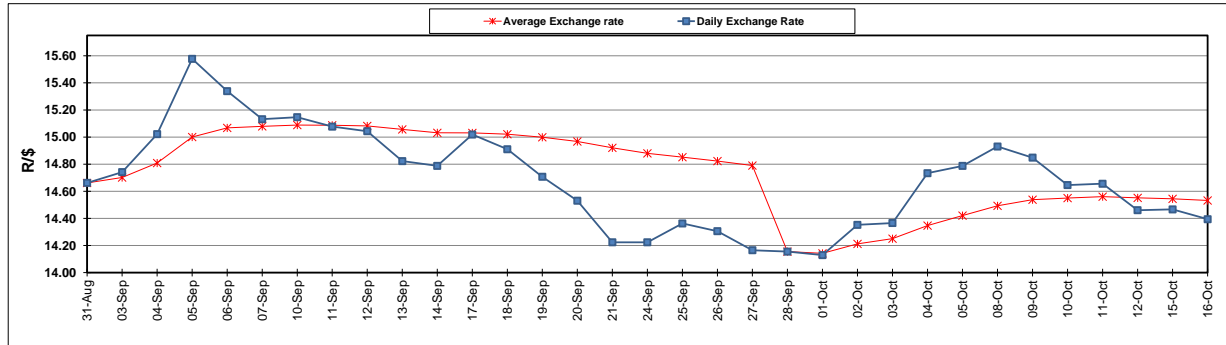
	PETROL 95 ULP	PETROL 93 ULP & LRP	DIESEL 0.05%	DIESEL 0.005%	ILL. PAR.
GAUTENG PUMP PRICE (SA c/l) AS FROM 03/10/2018	1 708.000	1 685.000	-	-	-
WHOLESALE PRICE (SA c/l) AS FROM 03/10/2018	-	-	1 564.830	1 569.230	1 057.088
SINGLE NATIONAL MAXIMUM RETAIL PRICE	-	-	-	-	1 372.000
BASIC FUEL PRICE - 16/10/2018 (SA c/l)	808.791	794.356	887.828	895.636	888.480
PRESS RELEASE CONTRIBUTION TO BFP 03/10/2018 - 16/10/2018 (SA c/l)	851.170	838.170	891.630	896.030	884.128
UNIT OVER/(UNDER) RECOVERY - 16/10/2018 (SA c/l)	42.379	43.814	3.802	0.394	(4.352)
AVERAGE BASIC FUEL PRICE 28/09/2018 - 16/10/2018	855.482	841.853	919.712	927.044	916.572
AVERAGE UNIT OVER/(UNDER) RECOVERY 28/09/2018 - 16/10/2018	(27.389)	(26.529)	(56.697)	(59.629)	(56.444)

ANALYSIS MOVEMENT OF AVERAGE OVER/(UNDER) RECOVERY

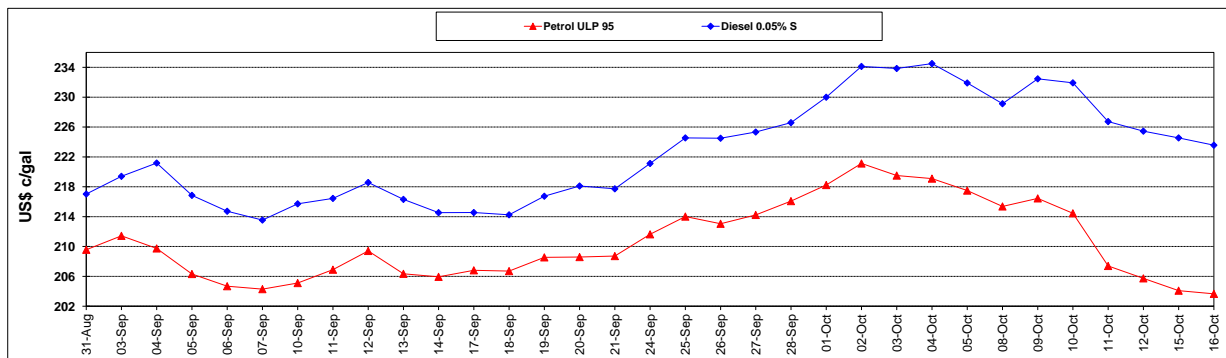
	PETROL 95	PETROL 93	DIESEL 0.05%	DIESEL 0.005%	ILL. PAR.
- MOVEMENT IN INTERNATIONAL PRODUCT PRICES	(42.529)	(41.428)	(72.974)	(76.036)	(72.666)
- MOVEMENT IN EXCHANGE RATE	15.140	14.899	16.277	16.407	16.222
AVERAGE UNIT OVER/(UNDER) RECOVERY 28/09/2018 - 16/10/2018	(27.389)	(26.529)	(56.697)	(59.629)	(56.444)

R/\$ EXCHANGE RATE - (R/\$14.3943 - 16/10/2018)

EXCHANGE RATE USED IN BASIC FUEL PRICE



INTERNATIONAL PRODUCT PRICES OF BASKET USED IN BASIC FUEL PRICE



BASIC FUEL PRICE IN SA CENTS PER LITRE

