

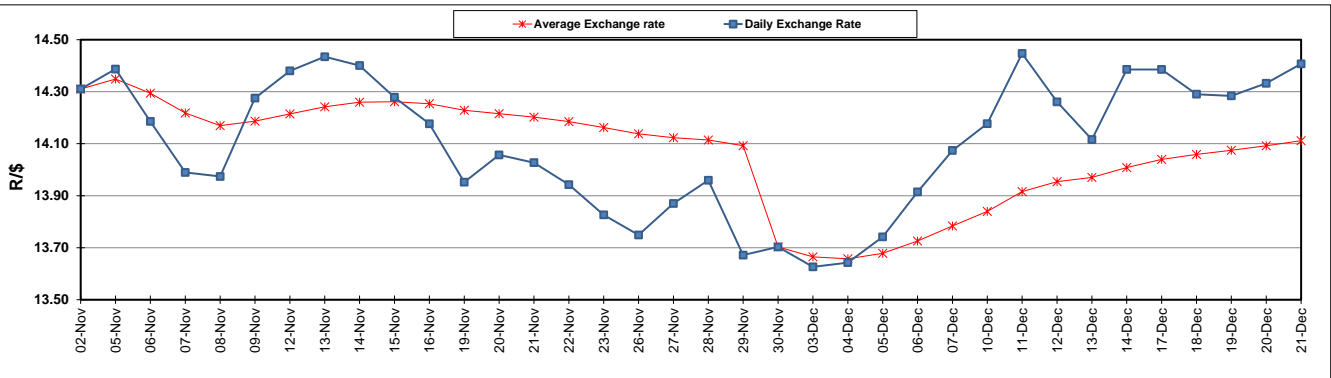
	PETROL 95 ULP	PETROL 93 ULP & LRP	DIESEL 0.05%	DIESEL 0.005%	ILL. PAR.
GAUTENG PUMP PRICE (SA c/l) AS FROM 05/12/2018	1 524.000	1 501.000	-	-	-
WHOLESALE PRICE (SA c/l) AS FROM 05/12/2018	-	-	1 467.340	1 472.740	951.678
SINGLE NATIONAL MAXIMUM RETAIL PRICE	-	-	-	-	1 231.000
BASIC FUEL PRICE - 21/12/2018 (SA c/l)	537.729	522.607	623.159	627.087	641.957
PRESS RELEASE CONTRIBUTION TO BFP 05/12/2018 - 21/12/2018 (SA c/l)	637.550	624.550	767.630	773.030	774.128
UNIT OVER/(UNDER) RECOVERY - 21/12/2018 (SA c/l)	99.821	101.943	144.471	145.943	132.171
AVERAGE BASIC FUEL PRICE 30/11/2018 - 21/12/2018	572.470	560.448	665.568	669.193	678.334
AVERAGE UNIT OVER/(UNDER) RECOVERY 30/11/2018 - 21/12/2018	101.024	100.046	130.187	132.337	121.669

ANALYSIS MOVEMENT OF AVERAGE OVER/(UNDER) RECOVERY

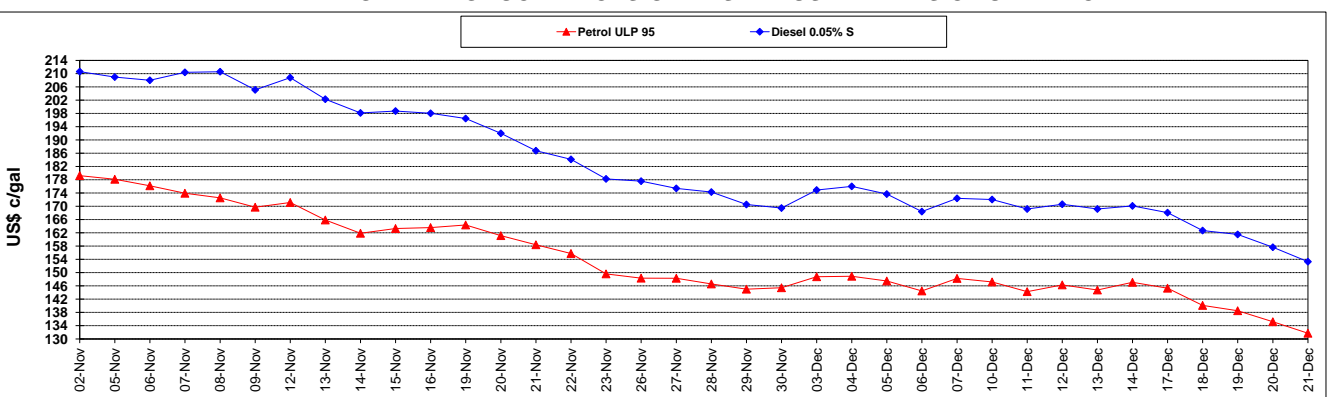
	PETROL 95	PETROL 93	DIESEL 0.05%	DIESEL 0.005%	ILL. PAR.
- MOVEMENT IN INTERNATIONAL PRODUCT PRICES	101.811	100.816	131.102	133.257	122.602
- MOVEMENT IN EXCHANGE RATE	(0.787)	(0.770)	(0.915)	(0.920)	(0.933)
AVERAGE UNIT OVER/(UNDER) RECOVERY 30/11/2018 - 21/12/2018	101.024	100.046	130.187	132.337	121.669

R/\$ EXCHANGE RATE - (R/\$14.4070 - 21/12/2018)

EXCHANGE RATE USED IN BASIC FUEL PRICE



INTERNATIONAL PRODUCT PRICES OF BASKET USED IN BASIC FUEL PRICE



BASIC FUEL PRICE IN SA CENTS PER LITRE

