

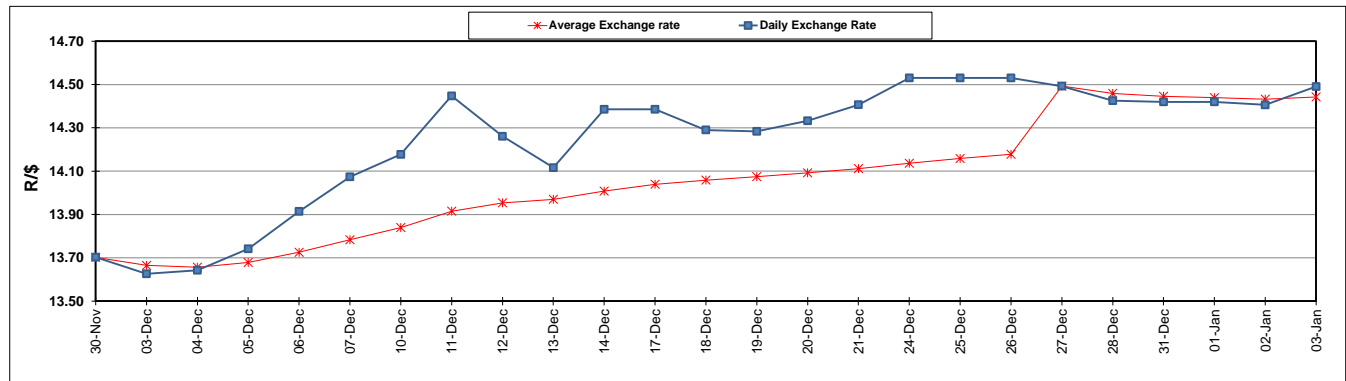
	PETROL 95 ULP	PETROL 93 ULP & LRP	DIESEL 0.05%	DIESEL 0.005%	ILL. PAR.
GAUTENG PUMP PRICE (SA c/l) AS FROM 02/01/2019	1 401.000	1 379.000	-	-	-
WHOLESALE PRICE (SA c/l) AS FROM 02/01/2019	-	-	1 313.420	1 316.820	828.678
SINGLE NATIONAL MAXIMUM RETAIL PRICE	-	-	-	-	1 067.000
BASIC FUEL PRICE - 03/01/2019 (SA c/l)	550.200	537.978	625.556	630.283	643.457
PRESS RELEASE CONTRIBUTION TO BFP 02/01/2018 - 03/01/2019 (SA c/l)	536.470	524.470	635.630	638.030	651.128
UNIT OVER/(UNDER) RECOVERY - 03/01/2019 (SA c/l)	(13.730)	(13.508)	10.074	7.747	7.671
AVERAGE BASIC FUEL PRICE 27/12/2018 - 03/01/2019	538.247	525.716	612.701	617.097	633.230
AVERAGE UNIT OVER/(UNDER) RECOVERY 27/12/2018 - 03/01/2019	65.610	65.474	110.929	110.933	99.898

ANALYSIS MOVEMENT OF AVERAGE OVER/(UNDER) RECOVERY

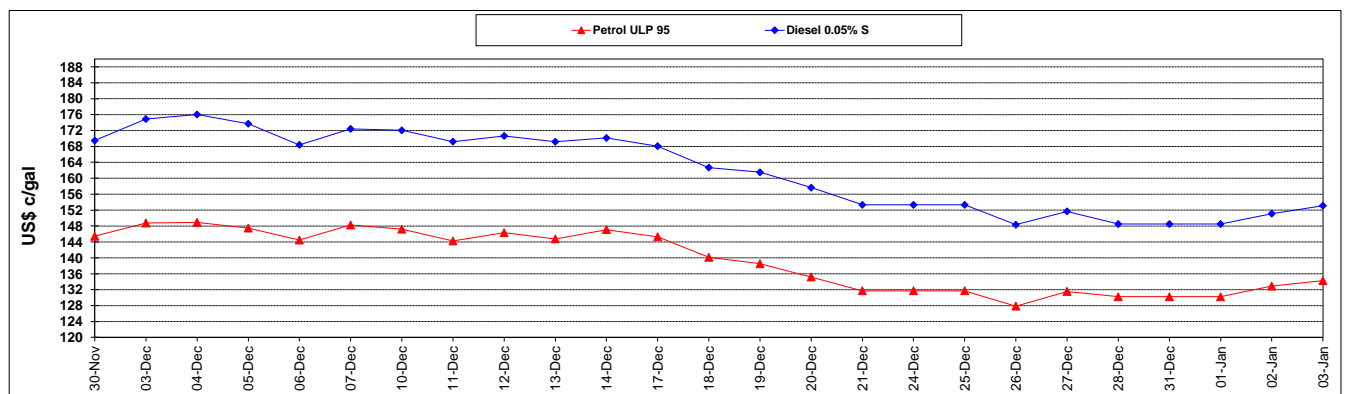
	PETROL 95	PETROL 93	DIESEL 0.05%	DIESEL 0.005%	ILL. PAR.
- MOVEMENT IN INTERNATIONAL PRODUCT PRICES	75.471	75.106	122.154	122.239	111.499
- MOVEMENT IN EXCHANGE RATE	(9.861)	(9.632)	(11.225)	(11.306)	(11.601)
AVERAGE UNIT OVER/(UNDER) RECOVERY 27/12/2018 - 03/01/2019	65.610	65.474	110.929	110.933	99.898

R/\$ EXCHANGE RATE - (R/\$14.4903 - 03/01/2019)

EXCHANGE RATE USED IN BASIC FUEL PRICE



INTERNATIONAL PRODUCT PRICES OF BASKET USED IN BASIC FUEL PRICE



BASIC FUEL PRICE IN SA CENTS PER LITRE

