

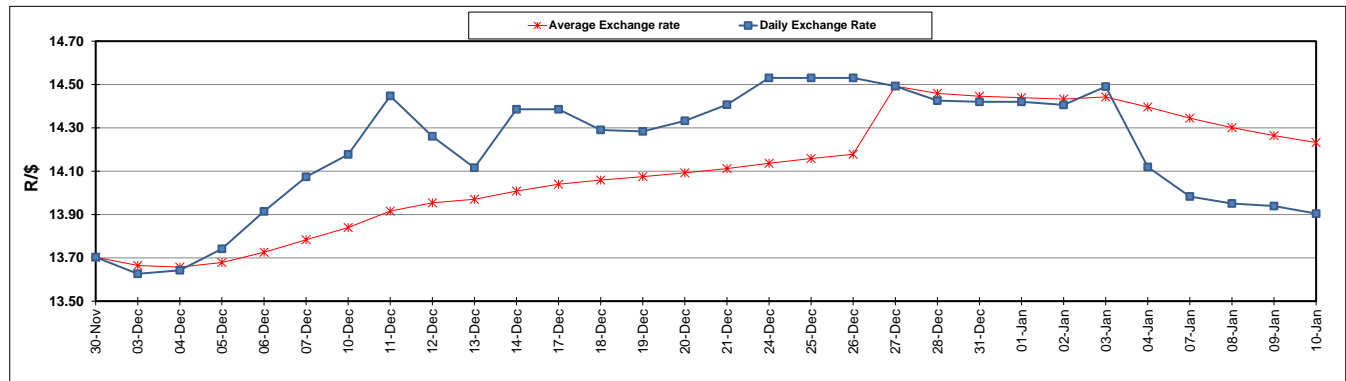
	PETROL 95 ULP	PETROL 93 ULP & LRP	DIESEL 0.05%	DIESEL 0.005%	ILL. PAR.
GAUTENG PUMP PRICE (SA c/l) AS FROM 02/01/2019	1 401.000	1 379.000	-	-	-
WHOLESALE PRICE (SA c/l) AS FROM 02/01/2019	-	-	1 313.420	1 316.820	828.678
SINGLE NATIONAL MAXIMUM RETAIL PRICE	-	-	-	-	1 067.000
BASIC FUEL PRICE - 10/01/2019 (SA c/l)	572.897	564.105	671.974	675.597	682.858
PRESS RELEASE CONTRIBUTION TO BFP 02/01/2018 - 10/01/2019 (SA c/l)	536.470	524.470	635.630	638.030	651.128
UNIT OVER/(UNDER) RECOVERY - 10/01/2019 (SA c/l)	(36.427)	(39.635)	(36.344)	(37.567)	(31.730)
AVERAGE BASIC FUEL PRICE 27/12/2018 - 10/01/2019	549.212	536.742	630.767	634.918	647.317
AVERAGE UNIT OVER/(UNDER) RECOVERY 27/12/2018 - 10/01/2019	24.015	24.121	52.863	52.203	48.538

ANALYSIS MOVEMENT OF AVERAGE OVER/(UNDER) RECOVERY

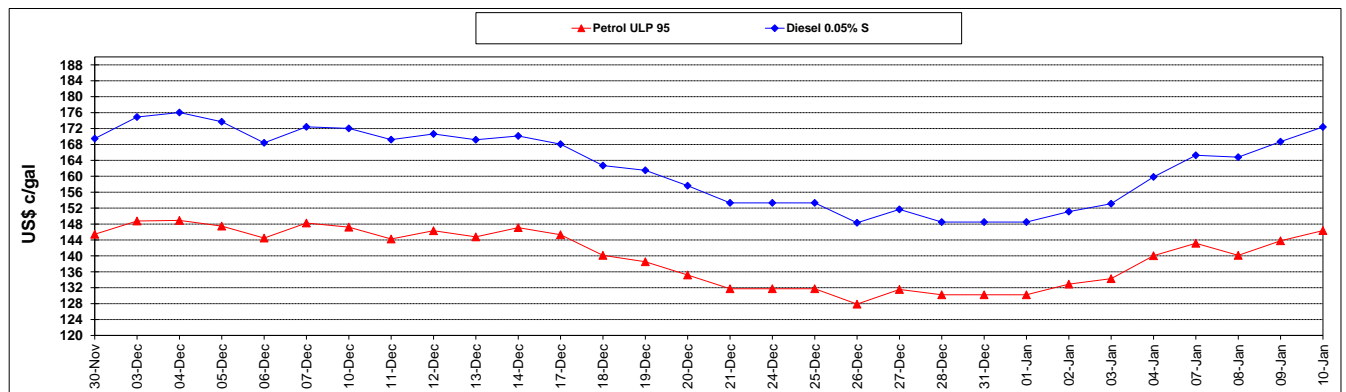
	PETROL 95	PETROL 93	DIESEL 0.05%	DIESEL 0.005%	ILL. PAR.
- MOVEMENT IN INTERNATIONAL PRODUCT PRICES	26.102	26.161	55.261	54.617	50.999
- MOVEMENT IN EXCHANGE RATE	(2.088)	(2.040)	(2.398)	(2.414)	(2.461)
AVERAGE UNIT OVER/(UNDER) RECOVERY 27/12/2018 - 10/01/2019	24.015	24.121	52.863	52.203	48.538

R/\$ EXCHANGE RATE - (R/\$13.9040 - 10/01/2019)

EXCHANGE RATE USED IN BASIC FUEL PRICE



INTERNATIONAL PRODUCT PRICES OF BASKET USED IN BASIC FUEL PRICE



BASIC FUEL PRICE IN SA CENTS PER LITRE

