

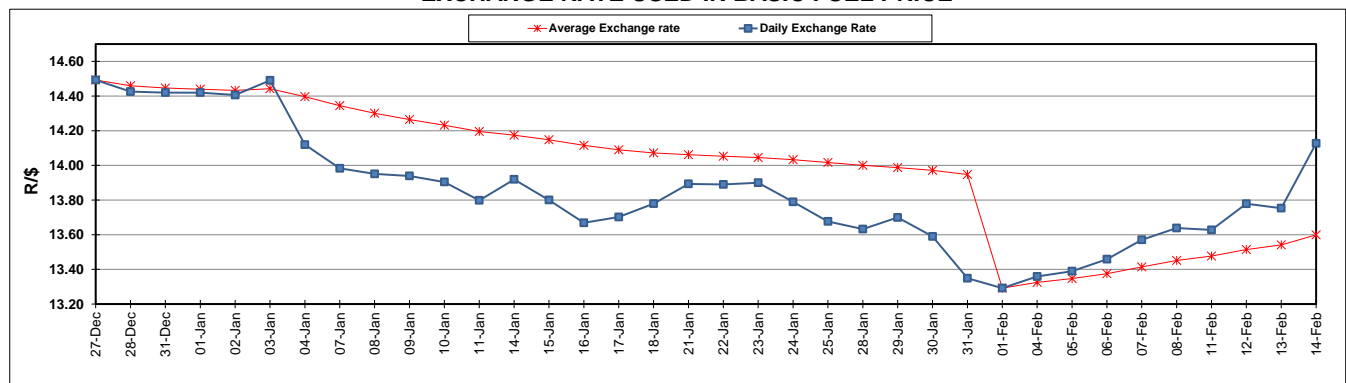
	PETROL 95 ULP	PETROL 93 ULP & LRP	DIESEL 0.05%	DIESEL 0.005%	ILL. PAR.
GAUTENG PUMP PRICE (SA c/l) AS FROM 06/02/2019	1 408.000	1 386.000	-	-	-
WHOLESALE PRICE (SA c/l) AS FROM 06/02/2019	-	-	1 314.420	1 318.820	823.678
SINGLE NATIONAL MAXIMUM RETAIL PRICE	-	-	-	-	1 060.000
BASIC FUEL PRICE - 14/02/2019 (SA c/l)	623.107	613.347	743.703	749.226	738.883
PRESS RELEASE CONTRIBUTION TO BFP 06/02/2019 - 14/02/2019 (SA c/l)	543.470	531.470	636.630	641.030	646.128
UNIT OVER/(UNDER) RECOVERY - 14/02/2019 (SA c/l)	(79.637)	(81.877)	(107.073)	(108.196)	(92.755)
AVERAGE BASIC FUEL PRICE 01/02/2019 - 14/02/2019	583.877	572.326	695.858	701.703	694.393
AVERAGE UNIT OVER/(UNDER) RECOVERY 01/02/2019 - 14/02/2019	(42.507)	(42.956)	(59.528)	(61.273)	(46.765)

ANALYSIS MOVEMENT OF AVERAGE OVER/(UNDER) RECOVERY

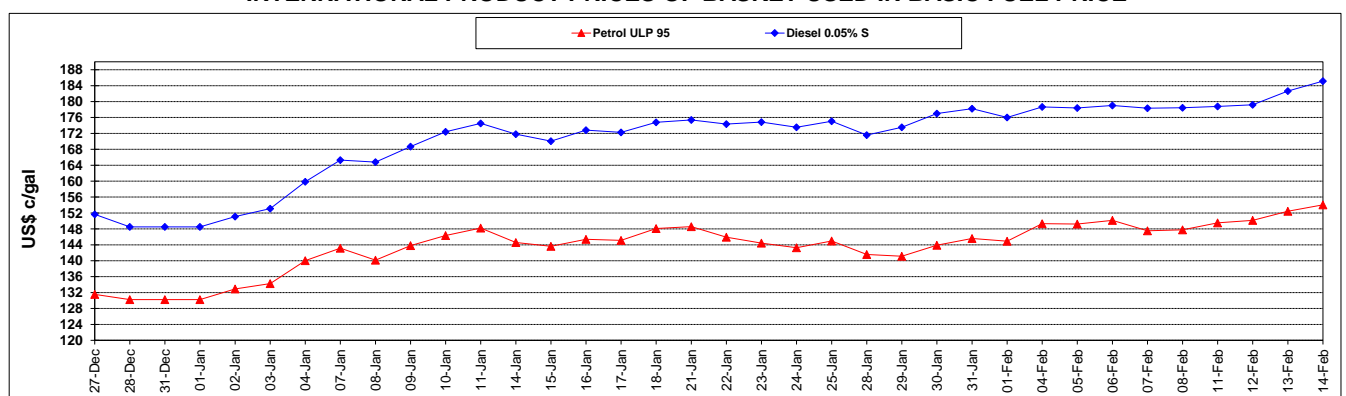
	PETROL 95	PETROL 93	DIESEL 0.05%	DIESEL 0.005%	ILL. PAR.
- MOVEMENT IN INTERNATIONAL PRODUCT PRICES	(58.483)	(58.616)	(78.568)	(80.473)	(65.765)
- MOVEMENT IN EXCHANGE RATE	15.976	15.660	19.040	19.200	19.000
AVERAGE UNIT OVER/(UNDER) RECOVERY 01/02/2019 - 14/02/2019	(42.507)	(42.956)	(59.528)	(61.273)	(46.765)

R/\$ EXCHANGE RATE - (R/\$14.1270 - 14/02/2019)

EXCHANGE RATE USED IN BASIC FUEL PRICE



INTERNATIONAL PRODUCT PRICES OF BASKET USED IN BASIC FUEL PRICE



BASIC FUEL PRICE IN SA CENTS PER LITRE

