

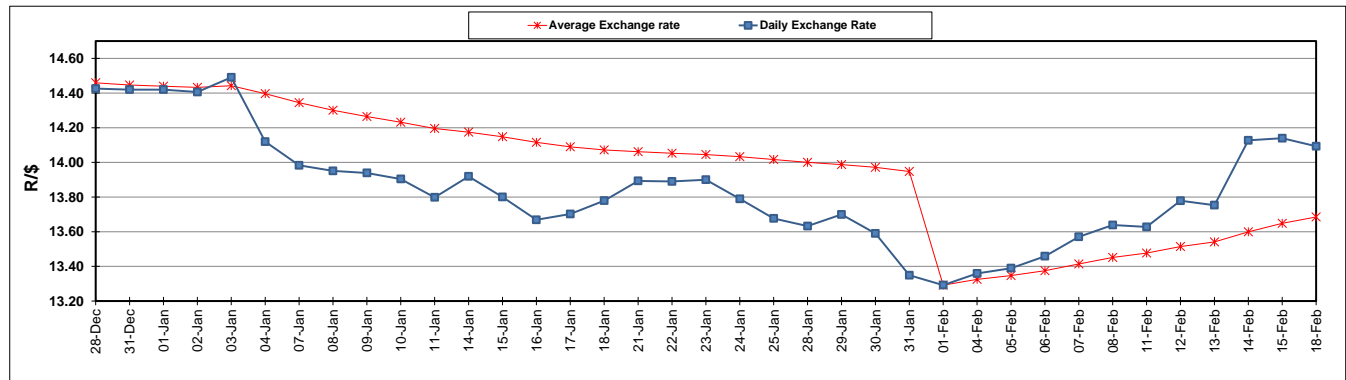
	PETROL 95 ULP	PETROL 93 ULP & LRP	DIESEL 0.05%	DIESEL 0.005%	ILL. PAR.
GAUTENG PUMP PRICE (SA c/l) AS FROM 06/02/2019	1 408.000	1 386.000	-	-	-
WHOLESALE PRICE (SA c/l) AS FROM 06/02/2019	-	-	1 314.420	1 318.820	823.678
SINGLE NATIONAL MAXIMUM RETAIL PRICE	-	-	-	-	1 060.000
BASIC FUEL PRICE - 18/02/2019 (SA c/l)	650.074	639.083	767.061	773.041	761.185
PRESS RELEASE CONTRIBUTION TO BFP 06/02/2019 - 18/02/2019 (SA c/l)	543.470	531.470	636.630	641.030	646.128
UNIT OVER/(UNDER) RECOVERY - 18/02/2019 (SA c/l)	(106.604)	(107.613)	(130.431)	(132.011)	(115.057)
AVERAGE BASIC FUEL PRICE 01/02/2019 - 18/02/2019	593.977	582.571	706.991	712.843	704.838
AVERAGE UNIT OVER/(UNDER) RECOVERY 01/02/2019 - 18/02/2019	(52.257)	(52.851)	(70.611)	(72.313)	(57.460)

ANALYSIS MOVEMENT OF AVERAGE OVER/(UNDER) RECOVERY

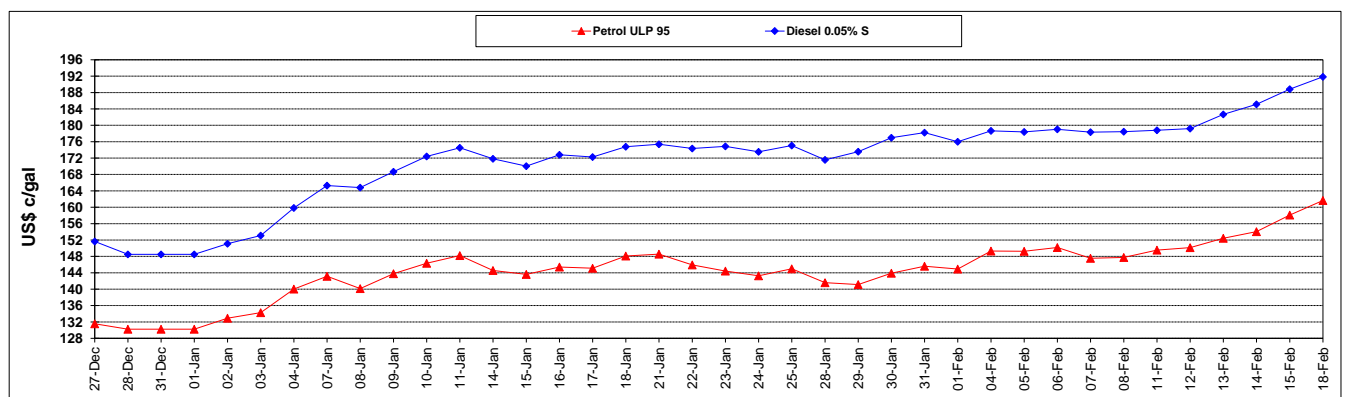
	PETROL 95	PETROL 93	DIESEL 0.05%	DIESEL 0.005%	ILL. PAR.
- MOVEMENT IN INTERNATIONAL PRODUCT PRICES	(64.670)	(65.026)	(85.386)	(87.210)	(72.190)
- MOVEMENT IN EXCHANGE RATE	12.413	12.175	14.775	14.897	14.730
AVERAGE UNIT OVER/(UNDER) RECOVERY 01/02/2019 - 18/02/2019	(52.257)	(52.851)	(70.611)	(72.313)	(57.460)

R/\$ EXCHANGE RATE - (R/\$14.0930 - 18/02/2019)

EXCHANGE RATE USED IN BASIC FUEL PRICE



INTERNATIONAL PRODUCT PRICES OF BASKET USED IN BASIC FUEL PRICE



BASIC FUEL PRICE IN SA CENTS PER LITRE

