

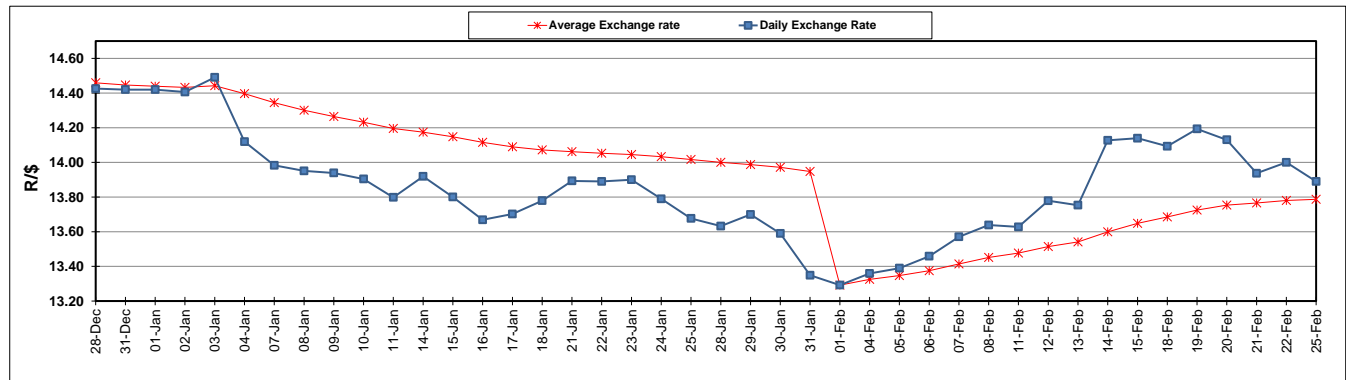
	PETROL 95 ULP	PETROL 93 ULP & LRP	DIESEL 0.05%	DIESEL 0.005%	ILL. PAR.
GAUTENG PUMP PRICE (SA c/l) AS FROM 06/02/2019	1 408.000	1 386.000	-	-	-
WHOLESALE PRICE (SA c/l) AS FROM 06/02/2019	-	-	1 314.420	1 318.820	823.678
SINGLE NATIONAL MAXIMUM RETAIL PRICE	-	-	-	-	1 060.000
BASIC FUEL PRICE - 25/02/2019 (SA c/l)	644.917	633.327	751.673	757.707	740.634
PRESS RELEASE CONTRIBUTION TO BFP 06/02/2019 - 25/02/2019 (SA c/l)	543.470	531.470	636.630	641.030	646.128
UNIT OVER/(UNDER) RECOVERY - 25/02/2019 (SA c/l)	(101.447)	(101.857)	(115.043)	(116.677)	(94.506)
AVERAGE BASIC FUEL PRICE 01/02/2019 - 25/02/2019	611.396	600.180	723.028	729.023	719.161
AVERAGE UNIT OVER/(UNDER) RECOVERY 01/02/2019 - 25/02/2019	(69.162)	(69.946)	(86.574)	(88.346)	(72.150)

### ANALYSIS MOVEMENT OF AVERAGE OVER/(UNDER) RECOVERY

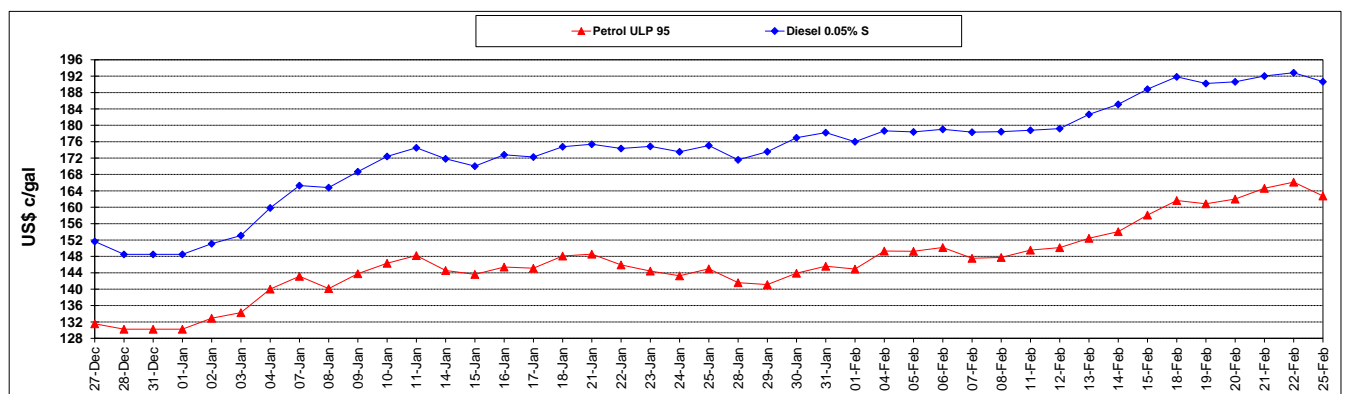
	PETROL 95	PETROL 93	DIESEL 0.05%	DIESEL 0.005%	ILL. PAR.
- MOVEMENT IN INTERNATIONAL PRODUCT PRICES	(77.347)	(77.981)	(96.255)	(98.107)	(81.780)
- MOVEMENT IN EXCHANGE RATE	8.186	8.036	9.681	9.761	9.629
AVERAGE UNIT OVER/(UNDER) RECOVERY 01/02/2019 - 25/02/2019	(69.162)	(69.946)	(86.574)	(88.346)	(72.150)

**R/\$ EXCHANGE RATE - (R/\$13.8900 - 25/02/2019)**

### EXCHANGE RATE USED IN BASIC FUEL PRICE



### INTERNATIONAL PRODUCT PRICES OF BASKET USED IN BASIC FUEL PRICE



### BASIC FUEL PRICE IN SA CENTS PER LITRE

