

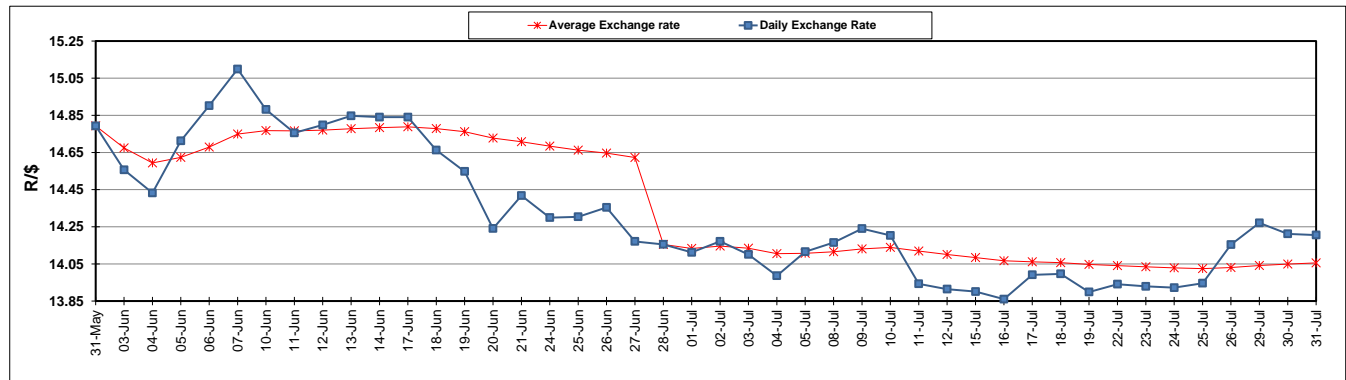
	PETROL 95 ULP	PETROL 93 ULP & LRP	DIESEL 0.05%	DIESEL 0.005%	ILL. PAR.
GAUTENG PUMP PRICE (SA c/l) AS FROM 03/07/2019	1 581.000	1 561.000	-	-	-
WHOLESALE PRICE (SA c/l) AS FROM 03/07/2019	-	-	1 446.500	1 451.900	916.678
SINGLE NATIONAL MAXIMUM RETAIL PRICE	-	-	-	-	1 165.000
BASIC FUEL PRICE - 31/07/2019 (SA c/l)	713.542	698.448	754.094	757.622	760.995
PRESS RELEASE CONTRIBUTION TO BFP 03/07/2019 - 31/07/2019 (SA c/l)	677.790	667.790	728.630	734.030	732.128
UNIT OVER/(UNDER) RECOVERY - 31/07/2019 (SA c/l)	(35.752)	(30.658)	(25.464)	(23.592)	(28.867)
AVERAGE BASIC FUEL PRICE 28/06/2019 - 31/07/2019	703.521	688.427	727.318	731.730	735.801
AVERAGE UNIT OVER/(UNDER) RECOVERY 28/06/2019 - 31/07/2019	(14.953)	(9.735)	9.562	10.675	3.452

ANALYSIS MOVEMENT OF AVERAGE OVER/(UNDER) RECOVERY

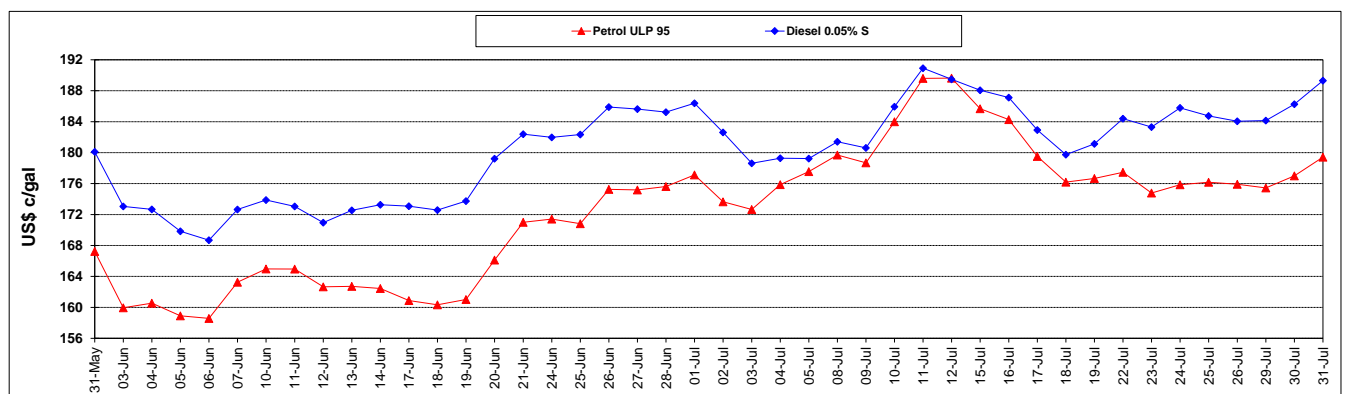
	PETROL 95	PETROL 93	DIESEL 0.05%	DIESEL 0.005%	ILL. PAR.
- MOVEMENT IN INTERNATIONAL PRODUCT PRICES	(43.338)	(37.510)	(19.783)	(18.848)	(26.235)
- MOVEMENT IN EXCHANGE RATE	28.385	27.776	29.345	29.523	29.687
AVERAGE UNIT OVER/(UNDER) RECOVERY 28/06/2019 - 31/07/2019	(14.953)	(9.735)	9.562	10.675	3.452

R/\$ EXCHANGE RATE - (R/\$14.2054 - 31/07/2019)

EXCHANGE RATE USED IN BASIC FUEL PRICE



INTERNATIONAL PRODUCT PRICES OF BASKET USED IN BASIC FUEL PRICE



BASIC FUEL PRICE IN SA CENTS PER LITRE

