

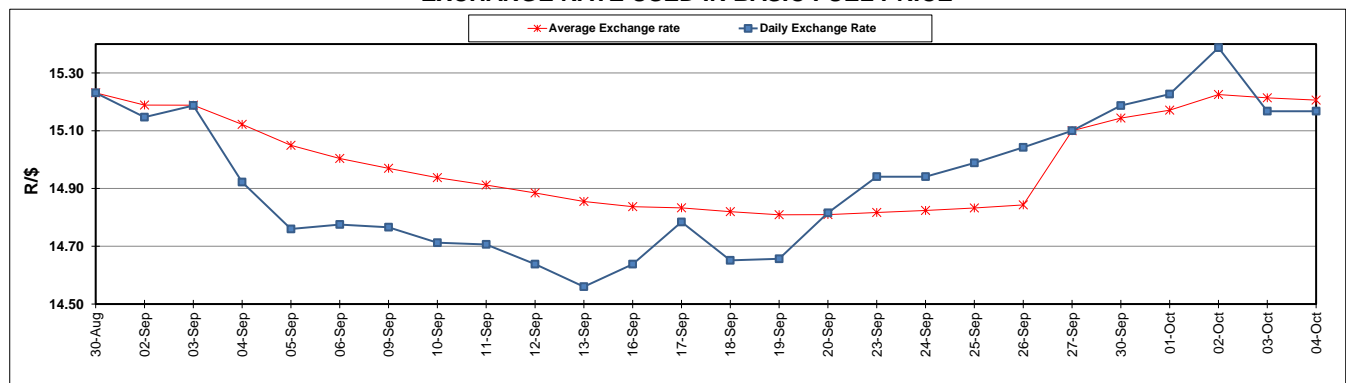
	PETROL 95 ULP	PETROL 93 ULP & LRP	DIESEL 0.05%	DIESEL 0.005%	ILL. PAR.
GAUTENG PUMP PRICE (SA c/l) AS FROM 02/10/2019	1,621.000	1,579.000	-	-	-
WHOLESALE PRICE (SA c/l) AS FROM 02/10/2019	-	-	1,484.210	1,488.610	961.678
SINGLE NATIONAL MAXIMUM RETAIL PRICE	-	-	-	-	1,228.000
BASIC FUEL PRICE - 04/10/2019 (SA c/l)	733.879	696.607	756.863	762.730	764.651
PRESS RELEASE CONTRIBUTION TO BFP 02/10/2019 - 04/10/2019 (SA c/l)	722.170	690.170	770.630	775.030	779.128
UNIT OVER/(UNDER) RECOVERY - 04/10/2019 (SA c/l)	(11.709)	(6.437)	13.767	12.300	14.477
AVERAGE BASIC FUEL PRICE 27/09/2019 - 04/10/2019	728.462	696.274	770.438	775.818	780.296
AVERAGE UNIT OVER/(UNDER) RECOVERY 27/09/2019 - 04/10/2019	(15.292)	(4.104)	(12.308)	(13.288)	(13.668)

ANALYSIS MOVEMENT OF AVERAGE OVER/(UNDER) RECOVERY

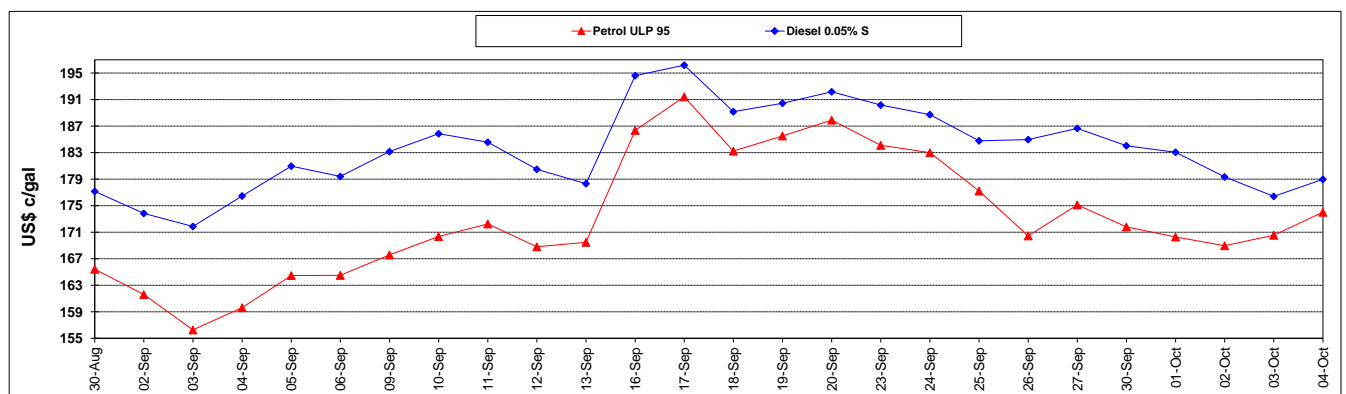
	PETROL 95	PETROL 93	DIESEL 0.05%	DIESEL 0.005%	ILL. PAR.
- MOVEMENT IN INTERNATIONAL PRODUCT PRICES	2.088	12.508	6.074	5.222	4.949
- MOVEMENT IN EXCHANGE RATE	(17.380)	(16.612)	(18.382)	(18.510)	(18.617)
AVERAGE UNIT OVER/(UNDER) RECOVERY 27/09/2019 - 04/10/2019	(15.292)	(4.104)	(12.308)	(13.288)	(13.668)

R/\$ EXCHANGE RATE - (R/\$15.1675 - 04/10/2019)

EXCHANGE RATE USED IN BASIC FUEL PRICE



INTERNATIONAL PRODUCT PRICES OF BASKET USED IN BASIC FUEL PRICE



BASIC FUEL PRICE IN SA CENTS PER LITRE

