

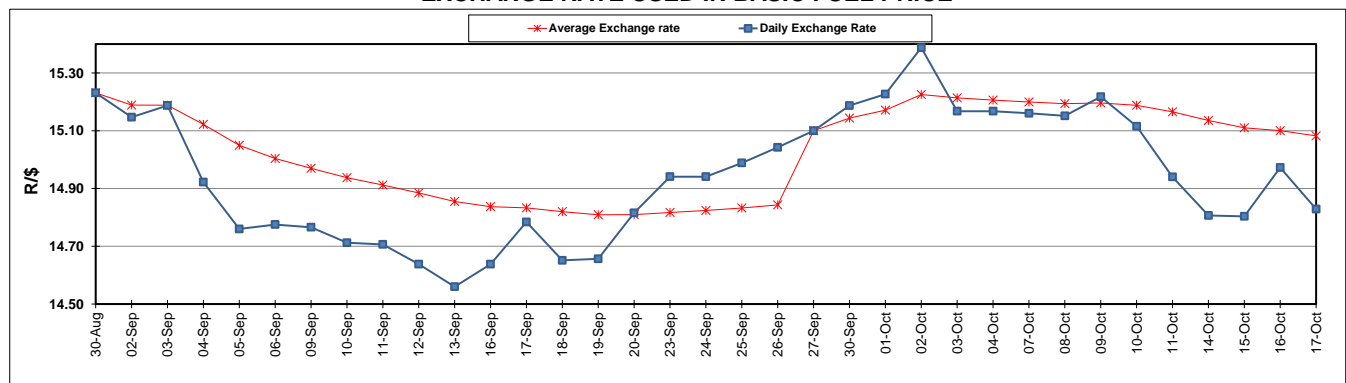
	PETROL 95 ULP	PETROL 93 ULP & LRP	DIESEL 0.05%	DIESEL 0.005%	ILL. PAR.
GAUTENG PUMP PRICE (SA c/l) AS FROM 02/10/2019	1,621.000	1,579.000	-	-	-
WHOLESALE PRICE (SA c/l) AS FROM 02/10/2019	-	-	1,484.210	1,488.610	961.678
SINGLE NATIONAL MAXIMUM RETAIL PRICE	-	-	-	-	1,228.000
BASIC FUEL PRICE - 17/10/2019 (SA c/l)	693.273	653.448	733.581	740.036	730.263
PRESS RELEASE CONTRIBUTION TO BFP 02/10/2019 - 17/10/2019 (SA c/l)	722.170	690.170	770.630	775.030	779.128
UNIT OVER/(UNDER) RECOVERY - 17/10/2019 (SA c/l)	28.897	36.722	37.049	34.994	48.865
AVERAGE BASIC FUEL PRICE 27/09/2019 - 17/10/2019	722.070	680.703	758.949	765.186	762.436
AVERAGE UNIT OVER/(UNDER) RECOVERY 27/09/2019 - 17/10/2019	(3.500)	10.267	6.681	4.844	11.692

### ANALYSIS MOVEMENT OF AVERAGE OVER/(UNDER) RECOVERY

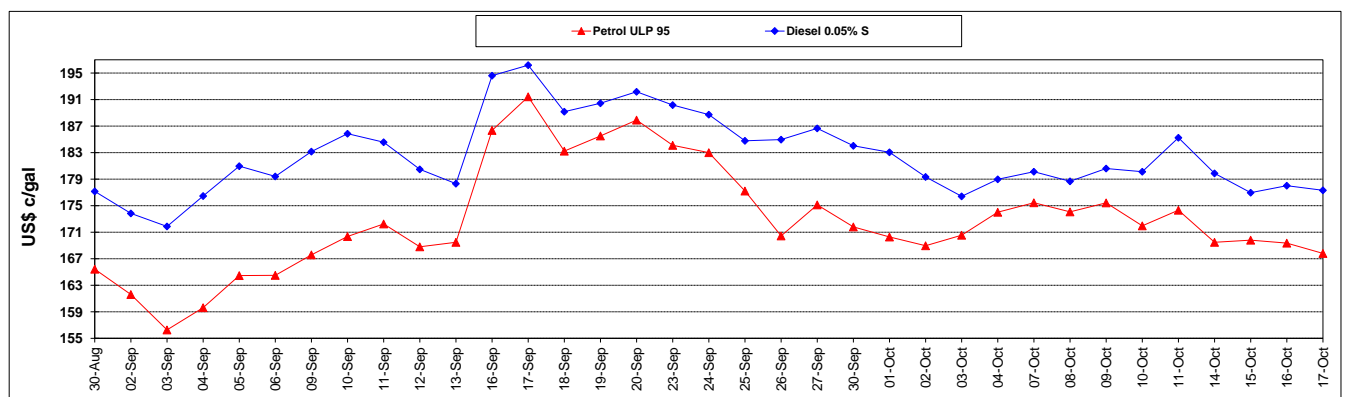
	PETROL 95	PETROL 93	DIESEL 0.05%	DIESEL 0.005%	ILL. PAR.
- MOVEMENT IN INTERNATIONAL PRODUCT PRICES	7.938	21.049	18.703	16.965	23.769
- MOVEMENT IN EXCHANGE RATE	(11.438)	(10.782)	(12.022)	(12.121)	(12.077)
AVERAGE UNIT OVER/(UNDER) RECOVERY 27/09/2019 - 17/10/2019	(3.500)	10.267	6.681	4.844	11.692

### R/\$ EXCHANGE RATE - (R/\$14.8287 - 17/10/2019)

#### EXCHANGE RATE USED IN BASIC FUEL PRICE



#### INTERNATIONAL PRODUCT PRICES OF BASKET USED IN BASIC FUEL PRICE



#### BASIC FUEL PRICE IN SA CENTS PER LITRE

