

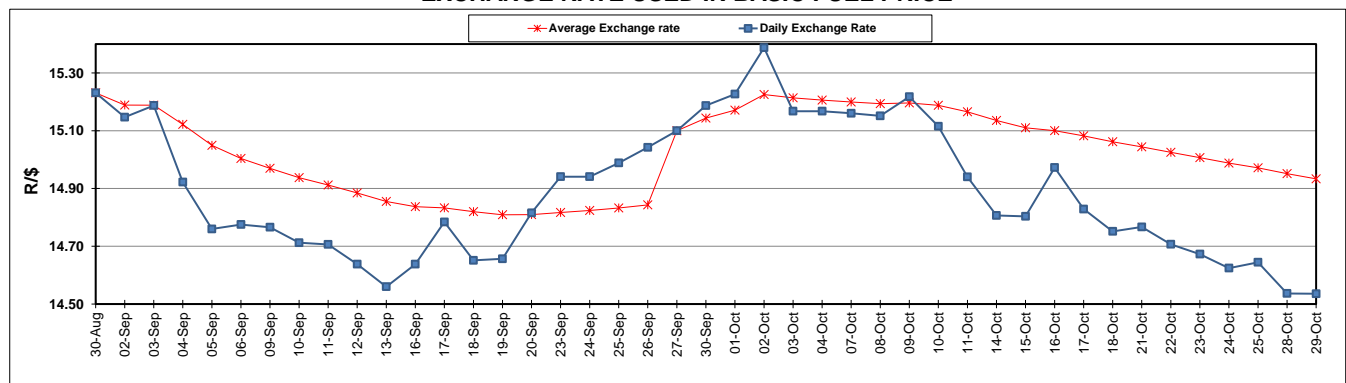
	PETROL 95 ULP	PETROL 93 ULP & LRP	DIESEL 0.05%	DIESEL 0.005%	ILL. PAR.
GAUTENG PUMP PRICE (SA c/l) AS FROM 02/10/2019	1,621.000	1,579.000	-	-	-
WHOLESALE PRICE (SA c/l) AS FROM 02/10/2019	-	-	1,484.210	1,488.610	961.678
SINGLE NATIONAL MAXIMUM RETAIL PRICE	-	-	-	-	1,228.000
BASIC FUEL PRICE - 29/10/2019 (SA c/l)	682.878	661.121	735.881	742.987	734.919
PRESS RELEASE CONTRIBUTION TO BFP 02/10/2019 - 29/10/2019 (SA c/l)	722.170	690.170	770.630	775.030	779.128
UNIT OVER/(UNDER) RECOVERY - 29/10/2019 (SA c/l)	39.292	29.049	34.749	32.043	44.209
AVERAGE BASIC FUEL PRICE 27/09/2019 - 29/10/2019	709.566	672.203	752.113	758.436	753.619
AVERAGE UNIT OVER/(UNDER) RECOVERY 27/09/2019 - 29/10/2019	10.257	18.489	15.257	13.333	22.248

ANALYSIS MOVEMENT OF AVERAGE OVER/(UNDER) RECOVERY

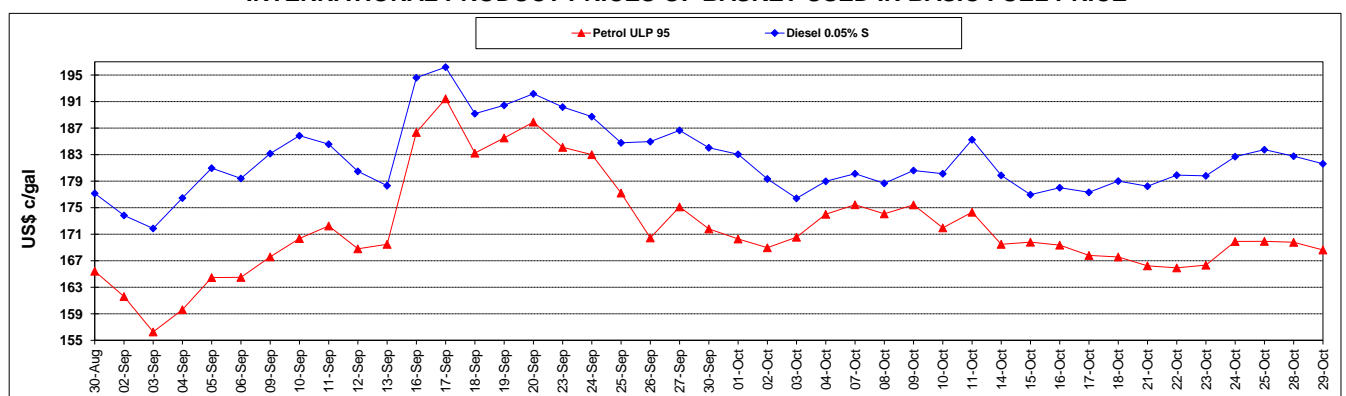
	PETROL 95	PETROL 93	DIESEL 0.05%	DIESEL 0.005%	ILL. PAR.
- MOVEMENT IN INTERNATIONAL PRODUCT PRICES	14.547	22.554	19.804	17.919	26.805
- MOVEMENT IN EXCHANGE RATE	(4.291)	(4.065)	(4.548)	(4.586)	(4.557)
AVERAGE UNIT OVER/(UNDER) RECOVERY 27/09/2019 - 29/10/2019	10.257	18.489	15.257	13.333	22.248

R/\$ EXCHANGE RATE - (R/\$14.5357 - 29/10/2019)

EXCHANGE RATE USED IN BASIC FUEL PRICE



INTERNATIONAL PRODUCT PRICES OF BASKET USED IN BASIC FUEL PRICE



BASIC FUEL PRICE IN SA CENTS PER LITRE

