

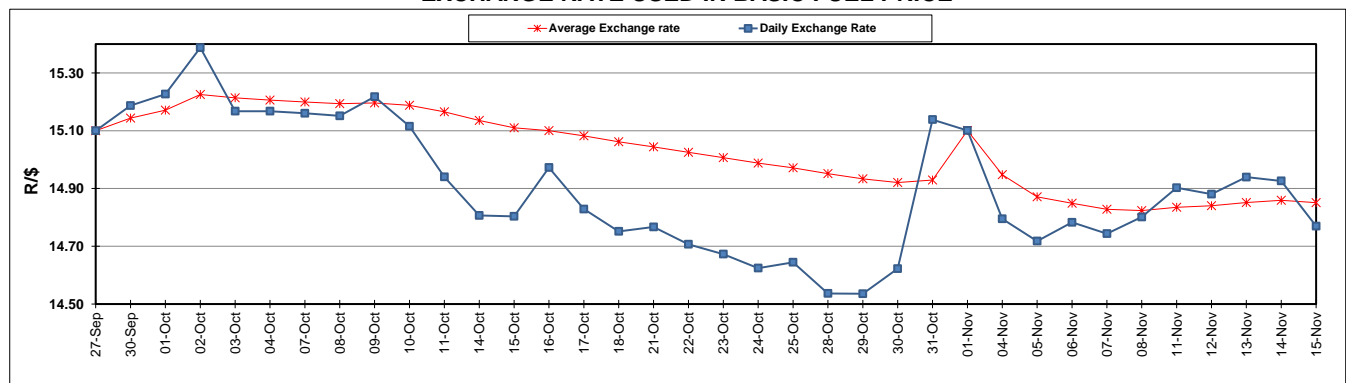
	PETROL 95 ULP	PETROL 93 ULP & LRP	DIESEL 0.05%	DIESEL 0.005%	ILL. PAR.
GAUTENG PUMP PRICE (SA c/l) AS FROM 06/11/2019	1,608.000	1,566.000	-	-	-
WHOLESALE PRICE (SA c/l) AS FROM 06/11/2019	-	-	1,468.210	1,474.610	938.678
SINGLE NATIONAL MAXIMUM RETAIL PRICE	-	-	-	-	1,197.000
BASIC FUEL PRICE - 15/11/2019 (SA c/l)	720.439	694.228	742.030	746.207	740.589
PRESS RELEASE CONTRIBUTION TO BFP 06/11/2019 - 15/11/2019 (SA c/l)	709.170	677.170	754.630	761.030	756.128
UNIT OVER/(UNDER) RECOVERY - 15/11/2019 (SA c/l)	(11.269)	(17.058)	12.600	14.823	15.539
AVERAGE BASIC FUEL PRICE 01/11/2019 - 15/11/2019	724.031	688.979	741.277	746.823	742.267
AVERAGE UNIT OVER/(UNDER) RECOVERY 01/11/2019 - 15/11/2019	(11.316)	(8.264)	17.717	18.026	20.134

ANALYSIS MOVEMENT OF AVERAGE OVER/(UNDER) RECOVERY

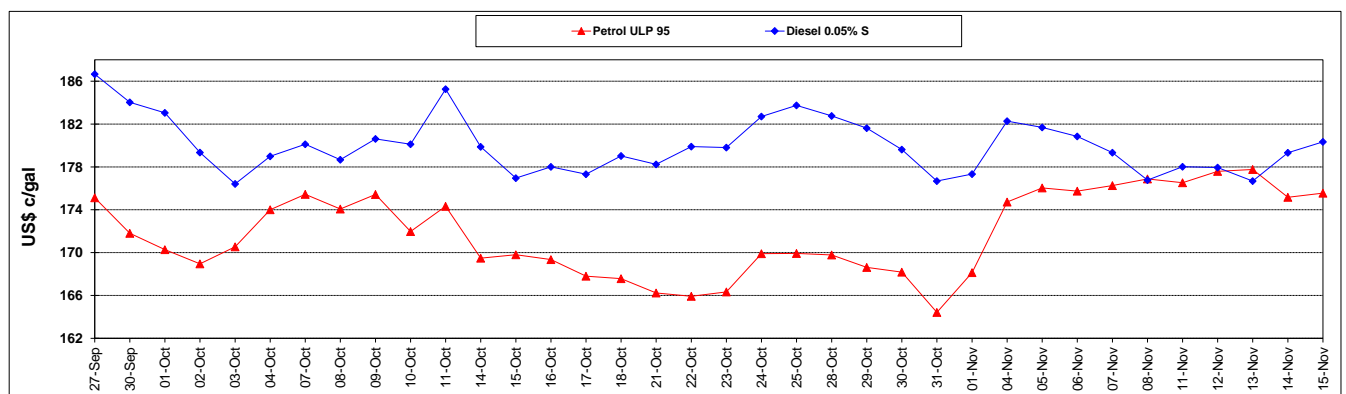
	PETROL 95	PETROL 93	DIESEL 0.05%	DIESEL 0.005%	ILL. PAR.
- MOVEMENT IN INTERNATIONAL PRODUCT PRICES	(15.138)	(11.901)	13.804	14.082	16.215
- MOVEMENT IN EXCHANGE RATE	3.822	3.637	3.913	3.943	3.919
AVERAGE UNIT OVER/(UNDER) RECOVERY 01/11/2019 - 15/11/2019	(11.316)	(8.264)	17.717	18.026	20.134

R/\$ EXCHANGE RATE - (R/\$14.7698 - 15/11/2019)

EXCHANGE RATE USED IN BASIC FUEL PRICE



INTERNATIONAL PRODUCT PRICES OF BASKET USED IN BASIC FUEL PRICE



BASIC FUEL PRICE IN SA CENTS PER LITRE

