

	PETROL 95 ULP	PETROL 93 ULP & LRP	DIESEL 0.05%	DIESEL 0.005%	ILL. PAR.
GAUTENG PUMP PRICE (SA c/l) AS FROM 07/12/2022	2,346.000	2,316.000	-	-	-
WHOLESALE PRICE (SA c/l) AS FROM 07/12/2022	-	-	2,391.770	2,422.170	1,718.958
SINGLE NATIONAL MAXIMUM RETAIL PRICE	-	-	-	-	2,267.000
BASIC FUEL PRICE - 06/12/2022 (SA c/l)	1,044.642	1,009.329	1,252.023	1,271.852	1,274.870
PRESS RELEASE CONTRIBUTION TO BFP 02/12/2022 - 06/12/2022 (SA c/l)	1,209.890	1,179.890	1,679.630	1,705.030	1,558.128
UNIT OVER/(UNDER) RECOVERY - 06/12/2022 (SA c/l)	165.248	170.561	427.607	433.178	283.258
AVERAGE BASIC FUEL PRICE 02/12/2022 - 06/12/2022	1,077.238	1,046.382	1,314.848	1,335.820	1,342.625
AVERAGE UNIT OVER/(UNDER) RECOVERY 02/12/2022 - 06/12/2022	132.652	133.508	364.782	369.210	215.503

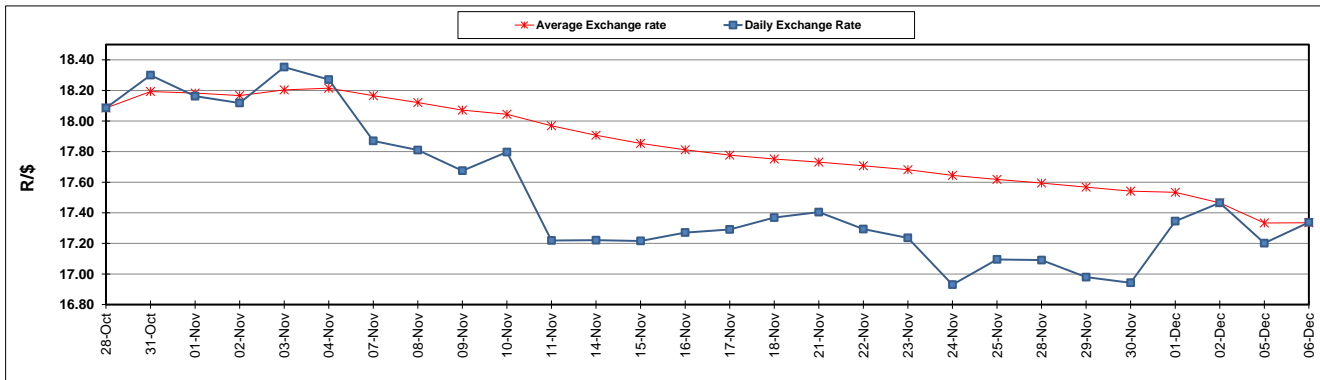
### ANALYSIS MOVEMENT OF AVERAGE OVER/(UNDER) RECOVERY

- MOVEMENT IN INTERNATIONAL PRODUCT PRICES
- MOVEMENT IN EXCHANGE RATE
- AVERAGE UNIT OVER/(UNDER) RECOVERY 02/12/2022 - 06/12/2022

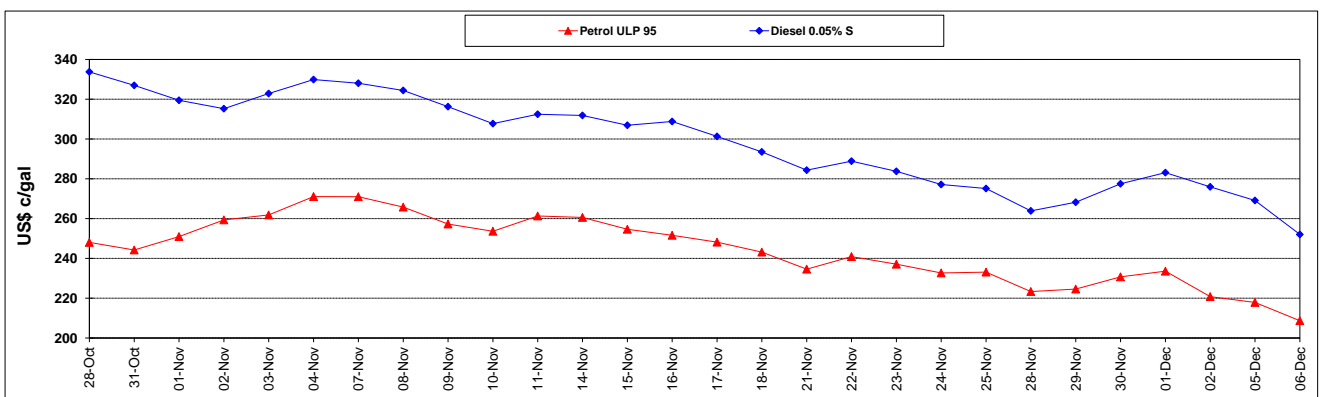
	PETROL 95	PETROL 93	DIESEL 0.05%	DIESEL 0.005%	ILL. PAR.
MOVEMENT IN INTERNATIONAL PRODUCT PRICES	120.286	121.496	349.688	353.875	200.090
MOVEMENT IN EXCHANGE RATE	12.366	12.012	15.094	15.335	15.413
AVERAGE UNIT OVER/(UNDER) RECOVERY 02/12/2022 - 06/12/2022	132.652	133.508	364.782	369.210	215.503

### R/\$ EXCHANGE RATE - (R/\$17.3375 - 06/12/2022)

#### EXCHANGE RATE USED IN BASIC FUEL PRICE



#### INTERNATIONAL PRODUCT PRICES OF BASKET USED IN BASIC FUEL PRICE



#### BASIC FUEL PRICE IN SA CENTS PER LITRE

