

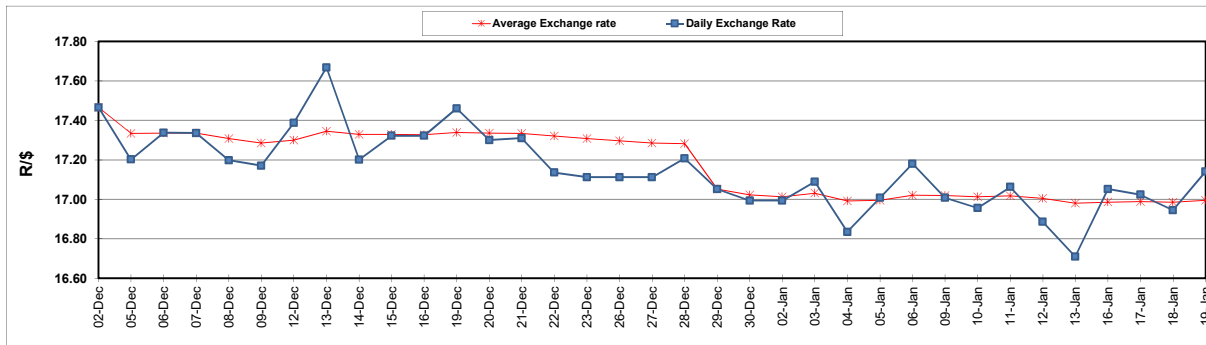
South African Cents per Litre (SA c/l)	PETROL 95 ULP	PETROL 93 ULP & LRP	DIESEL 0.05%	DIESEL 0.005%	ILL. PAR.
GAUTENG PUMP PRICE AS FROM 04/01/2023	2,140.000	2,110.000	-	-	-
WHOLESALE PRICE AS FROM 04/01/2023	-	-	2,122.870	2,141.270	1,525.958
SINGLE NATIONAL MAXIMUM RETAIL PRICE	-	-	-	-	2,009.000
BASIC FUEL PRICE - 19/01/2023	1,201.283	1,174.044	1,399.904	1,409.307	1,447.308
PRESS RELEASE CONTRIBUTION TO BFP 04/01/2023 - 19/01/2023	1,050.390	1,020.390	1,261.630	1,280.030	1,307.128
UNIT OVER/(UNDER) RECOVERY - 19/01/2023	(150.893)	(153.654)	(138.274)	(129.277)	(140.180)
AVERAGE BASIC FUEL PRICE 29/12/2022 - 19/01/2023	1,110.529	1,087.334	1,317.483	1,326.860	1,351.269
AVERAGE UNIT OVER/(UNDER) RECOVERY 29/12/2022 - 19/01/2023	(14.114)	(20.919)	5.897	17.920	4.109

ANALYSIS MOVEMENT OF AVERAGE OVER/(UNDER) RECOVERY

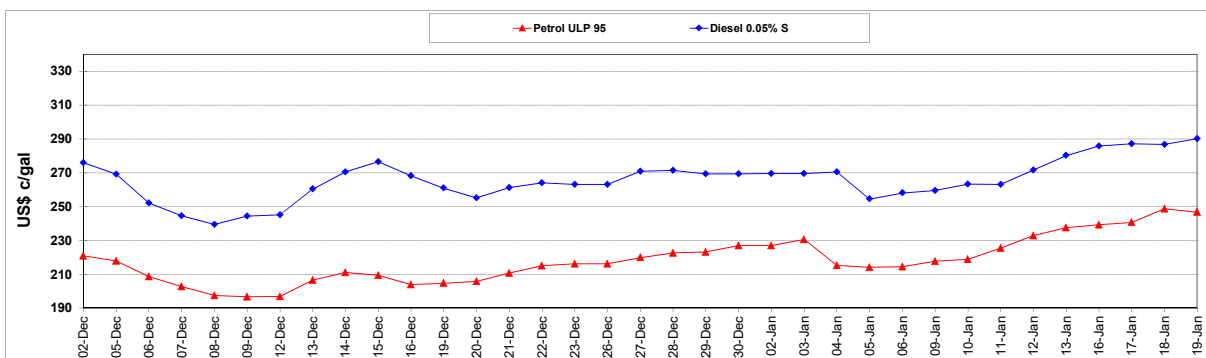
	PETROL 95	PETROL 93	DIESEL 0.05%	DIESEL 0.005%	ILL. PAR.
- MOVEMENT IN INTERNATIONAL PRODUCT PRICES	(27.927)	(34.444)	(10.491)	1.416	(12.699)
- MOVEMENT IN EXCHANGE RATE	13.813	13.525	16.388	16.504	16.808
AVERAGE UNIT OVER/(UNDER) RECOVERY 29/12/2022 - 19/01/2023	(14.114)	(20.919)	5.897	17.920	4.109

R/\$ EXCHANGE RATE - (R/\$17.1398 - 19/01/2023)

EXCHANGE RATE USED IN BASIC FUEL PRICE



INTERNATIONAL PRODUCT PRICES OF BASKET USED IN BASIC FUEL PRICE



BASIC FUEL PRICE IN SA CENTS PER LITRE

