

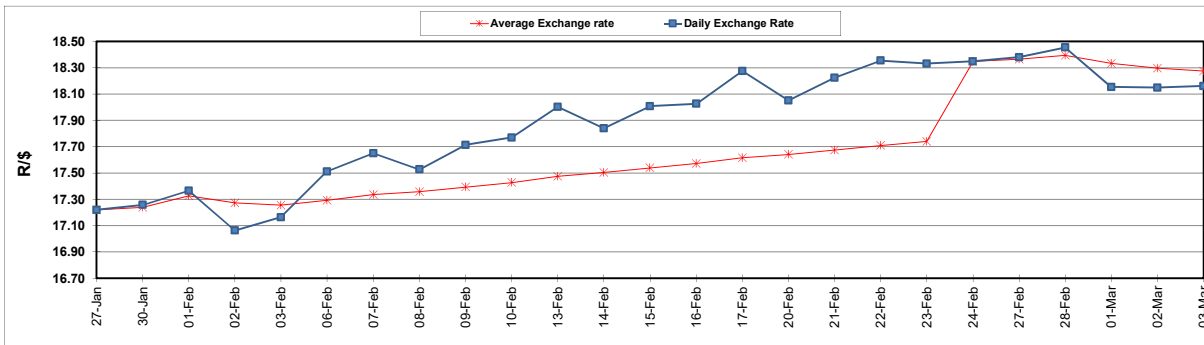
South African Cents per Litre (SA c/l)	PETROL 95 ULP	PETROL 93 ULP & LRP	DIESEL 0.05%	DIESEL 0.005%	ILL. PAR.
GAUTENG PUMP PRICE AS FROM 01/03/2023	2,295.000	2,265.000	-	-	-
WHOLESALE PRICE AS FROM 01/03/2023	-	-	2,162.410	2,171.810	1,596.958
SINGLE NATIONAL MAXIMUM RETAIL PRICE	-	-	-	-	2,104.000
BASIC FUEL PRICE - 03/03/2023	1,230.127	1,202.711	1,330.419	1,339.210	1,332.477
PRESS RELEASE CONTRIBUTION TO BFP 01/03/2023 - 03/03/2023	1,244.850	1,214.850	1,340.630	1,350.030	1,378.128
UNIT OVER/(UNDER) RECOVERY - 03/03/2023	14.723	12.139	10.211	10.820	45.651
AVERAGE BASIC FUEL PRICE 24/02/2023 - 03/03/2023	1,239.063	1,210.103	1,336.213	1,342.807	1,340.358
AVERAGE UNIT OVER/(UNDER) RECOVERY 24/02/2023 - 03/03/2023	(55.523)	(56.563)	(8.583)	(6.277)	31.270

ANALYSIS MOVEMENT OF AVERAGE OVER/(UNDER) RECOVERY

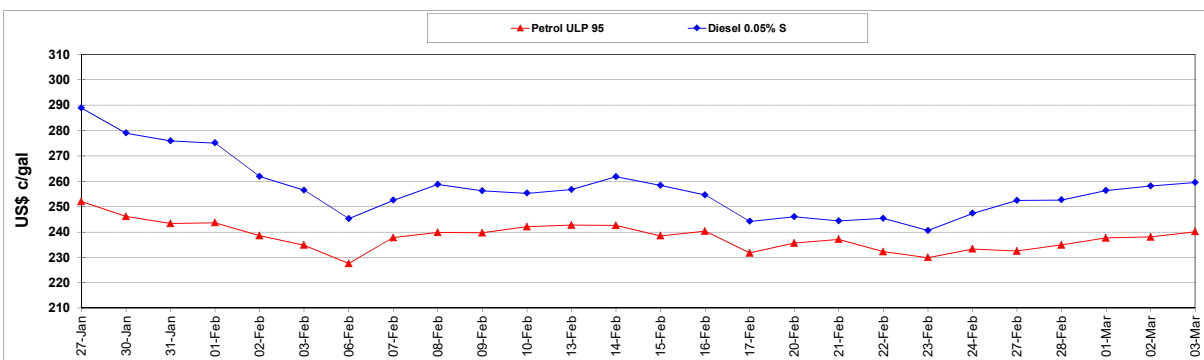
	PETROL 95	PETROL 93	DIESEL 0.05%	DIESEL 0.005%	ILL. PAR.
- MOVEMENT IN INTERNATIONAL PRODUCT PRICES	(19.368)	(21.253)	30.406	32.905	70.380
- MOVEMENT IN EXCHANGE RATE	(36.155)	(35.310)	(38.989)	(39.182)	(39.110)
AVERAGE UNIT OVER/(UNDER) RECOVERY 24/02/2023 - 03/03/2023	(55.523)	(56.563)	(8.583)	(6.277)	31.270

R/\$ EXCHANGE RATE - (R/\$18.1600 - 03/03/2023)

EXCHANGE RATE USED IN BASIC FUEL PRICE



INTERNATIONAL PRODUCT PRICES OF BASKET USED IN BASIC FUEL PRICE



BASIC FUEL PRICE IN SA CENTS PER LITRE

