

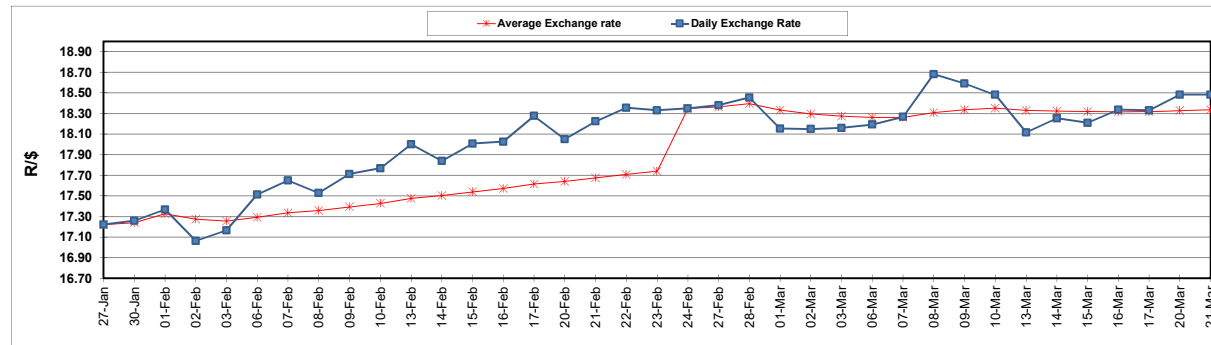
South African Cents per Litre (SA c/l)	PETROL 95 ULP	PETROL 93 ULP & LRP	DIESEL 0.05%	DIESEL 0.005%	ILL. PAR.
GAUTENG PUMP PRICE AS FROM 01/03/2123	2,295.000	2,265.000	-	-	-
WHOLESALE PRICE AS FROM 01/03/2123	-	-	2,162.410	2,171.810	1,596.958
SINGLE NATIONAL MAXIMUM RETAIL PRICE	-	-	-	-	2,104.000
BASIC FUEL PRICE - 21/03/2023	1,207.683	1,174.403	1,215.585	1,225.371	1,165.444
PRESS RELEASE CONTRIBUTION TO BFP 01/03/2023 - 21/03/2023	1,244.850	1,214.850	1,340.630	1,350.030	1,378.128
UNIT OVER/(UNDER) RECOVERY - 21/03/2023	37.167	40.447	125.045	124.659	212.684
AVERAGE BASIC FUEL PRICE 24/02/2023 - 21/03/2023	1,226.189	1,195.099	1,283.599	1,291.845	1,266.618
AVERAGE UNIT OVER/(UNDER) RECOVERY 24/02/2023 - 21/03/2023	(1.776)	(0.686)	52.698	53.686	109.343

ANALYSIS MOVEMENT OF AVERAGE OVER/(UNDER) RECOVERY

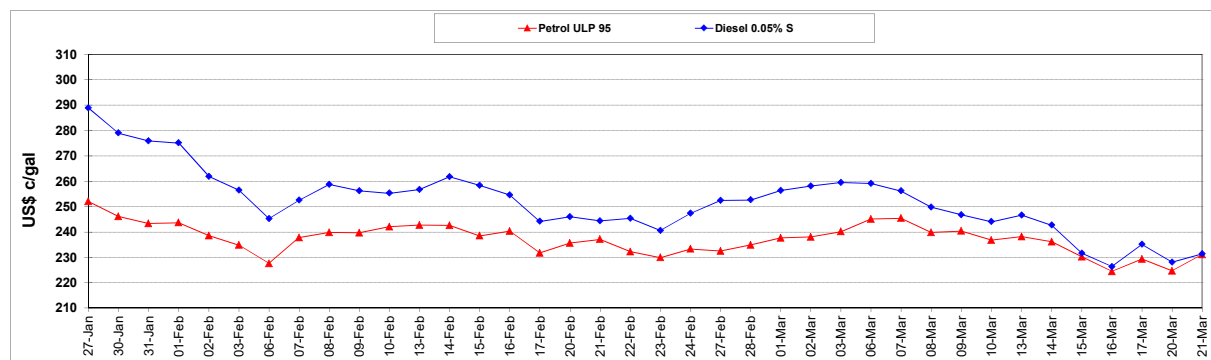
	PETROL 95	PETROL 93	DIESEL 0.05%	DIESEL 0.005%	ILL. PAR.
- MOVEMENT IN INTERNATIONAL PRODUCT PRICES	38.093	38.172	94.434	95.689	150.527
- MOVEMENT IN EXCHANGE RATE	(39.869)	(38.858)	(41.736)	(42.004)	(41.184)
AVERAGE UNIT OVER/(UNDER) RECOVERY 24/02/2023 - 21/03/2023	(1.776)	(0.686)	52.698	53.686	109.343

R/\$ EXCHANGE RATE - (R/\$18.4815 - 21/03/2023)

EXCHANGE RATE USED IN BASIC FUEL PRICE



INTERNATIONAL PRODUCT PRICES OF BASKET USED IN BASIC FUEL PRICE



BASIC FUEL PRICE IN SA CENTS PER LITRE

