

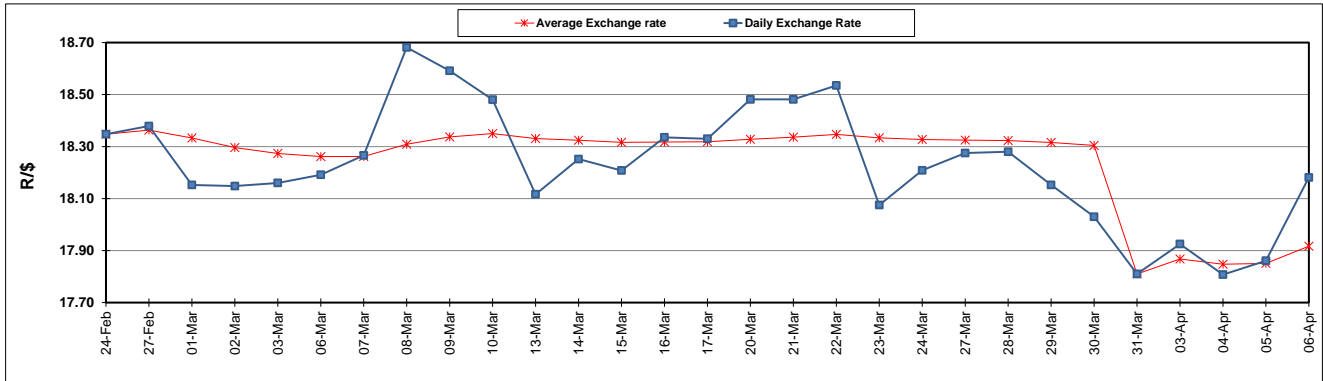
South African Cents per Litre (SA c/l)	PETROL 95 ULP	PETROL 93 ULP & LRP	DIESEL 0.05%	DIESEL 0.005%	ILL. PAR.
GAUTENG PUMP PRICE AS FROM 05/04/2023	2,297.000	2,264.000	-	-	-
WHOLESALE PRICE AS FROM 05/04/2023	-	-	2,088.830	2,097.230	1,472.058
SINGLE NATIONAL MAXIMUM RETAIL PRICE	-	-	-	-	1,903.000
BASIC FUEL PRICE - 06/04/2023	1,346.635	1,321.859	1,282.278	1,307.550	1,273.141
PRESS RELEASE CONTRIBUTION TO BFP 05/04/2023 - 06/04/2023	1,243.430	1,210.430	1,263.630	1,272.030	1,239.128
UNIT OVER/(UNDER) RECOVERY - 06/04/2023	(103.205)	(111.429)	(18.648)	(35.520)	(34.013)
AVERAGE BASIC FUEL PRICE 31/03/2023 - 06/04/2023	1,291.926	1,269.070	1,235.143	1,252.930	1,213.685
AVERAGE UNIT OVER/(UNDER) RECOVERY 31/03/2023 - 06/04/2023	(47.644)	(55.988)	74.687	65.900	108.843

ANALYSIS MOVEMENT OF AVERAGE OVER/(UNDER) RECOVERY

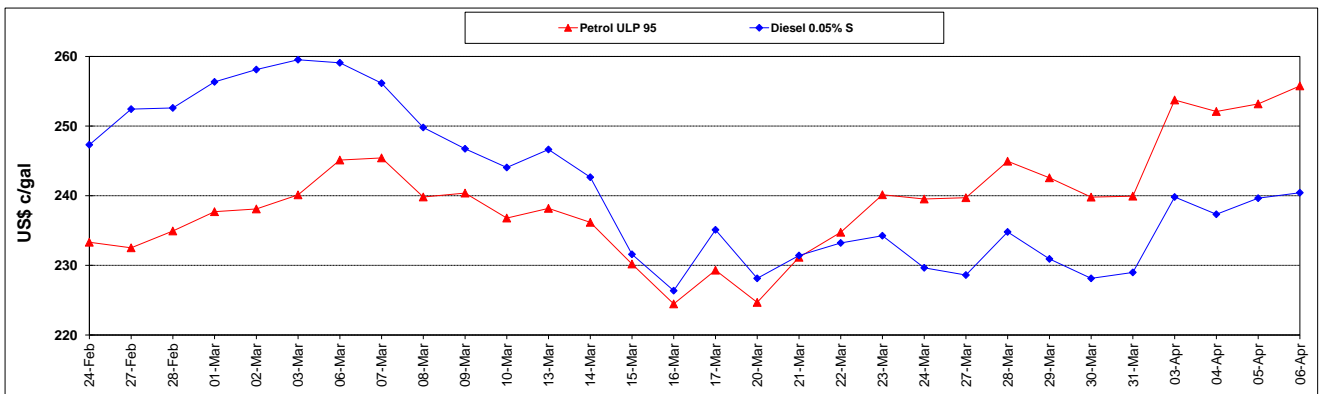
	PETROL 95	PETROL 93	DIESEL 0.05%	DIESEL 0.005%	ILL. PAR.
- MOVEMENT IN INTERNATIONAL PRODUCT PRICES	(75.593)	(83.442)	47.967	38.795	82.587
- MOVEMENT IN EXCHANGE RATE	27.949	27.454	26.720	27.105	26.256
AVERAGE UNIT OVER/(UNDER) RECOVERY 31/03/2023 - 06/04/2023	(47.644)	(55.988)	74.687	65.900	108.843

R/\$ EXCHANGE RATE - (R/\$18.1813 - 06/04/2023)

EXCHANGE RATE USED IN BASIC FUEL PRICE



INTERNATIONAL PRODUCT PRICES OF BASKET USED IN BASIC FUEL PRICE



BASIC FUEL PRICE IN SA CENTS PER LITRE

