

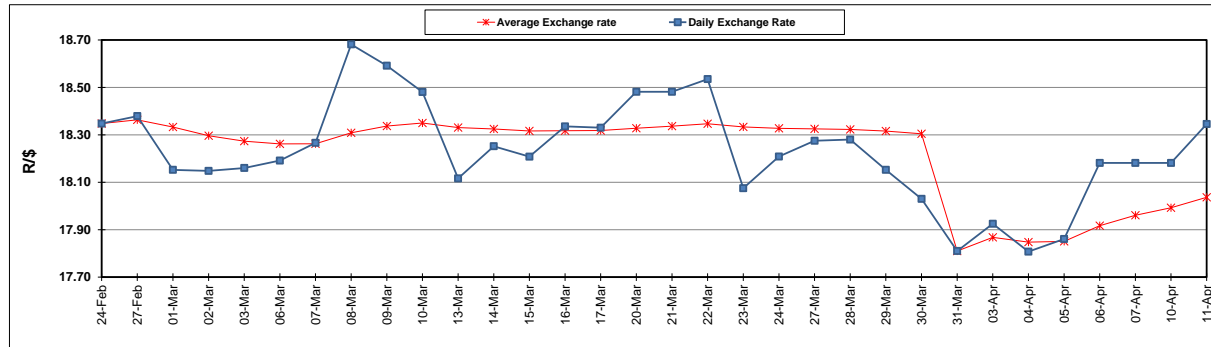
South African Cents per Litre (SA c/l)	PETROL 95 ULP	PETROL 93 ULP & LRP	DIESEL 0.05%	DIESEL 0.005%	ILL. PAR.
GAUTENG PUMP PRICE AS FROM 05/04/2023	2,297.000	2,264.000	-	-	-
WHOLESALE PRICE AS FROM 05/04/2023	-	-	2,088.830	2,097.230	1,472.058
SINGLE NATIONAL MAXIMUM RETAIL PRICE	-	-	-	-	1,903.000
BASIC FUEL PRICE - 11/04/2023	1,356.983	1,332.059	1,248.574	1,283.290	1,259.653
PRESS RELEASE CONTRIBUTION TO BFP 05/04/2023 - 11/04/2023	1,243.430	1,210.430	1,263.630	1,272.030	1,239.128
UNIT OVER/(UNDER) RECOVERY - 11/04/2023	(113.553)	(121.629)	15.056	(11.260)	(20.525)
AVERAGE BASIC FUEL PRICE 31/03/2023 - 11/04/2023	1,313.580	1,289.239	1,246.909	1,269.230	1,233.654
AVERAGE UNIT OVER/(UNDER) RECOVERY 31/03/2023 - 11/04/2023	(69.617)	(77.151)	45.596	32.050	57.599

ANALYSIS MOVEMENT OF AVERAGE OVER/(UNDER) RECOVERY

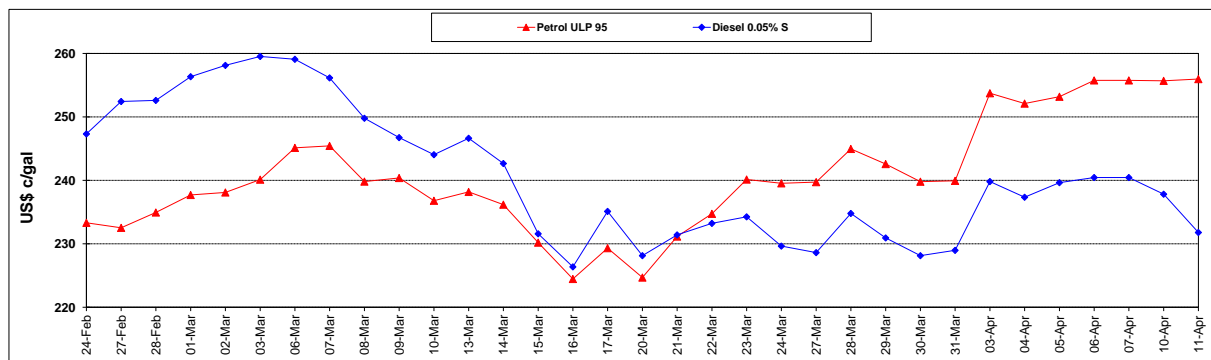
	PETROL 95	PETROL 93	DIESEL 0.05%	DIESEL 0.005%	ILL. PAR.
- MOVEMENT IN INTERNATIONAL PRODUCT PRICES	(89.128)	(96.300)	27.075	13.198	39.275
- MOVEMENT IN EXCHANGE RATE	19.511	19.149	18.521	18.852	18.324
AVERAGE UNIT OVER/(UNDER) RECOVERY 31/03/2023 - 11/04/2023	(69.617)	(77.151)	45.596	32.050	57.599

R/\$ EXCHANGE RATE - (R/\$18.3455 - 11/04/2023)

EXCHANGE RATE USED IN BASIC FUEL PRICE



INTERNATIONAL PRODUCT PRICES OF BASKET USED IN BASIC FUEL PRICE



BASIC FUEL PRICE IN SA CENTS PER LITRE

