

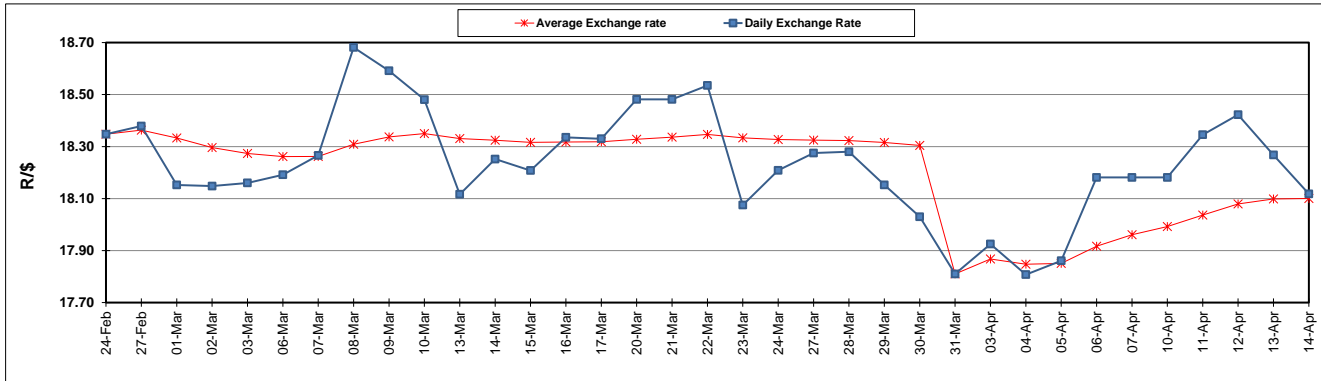
South African Cents per Litre (SA c/l)	PETROL 95 ULP	PETROL 93 ULP & LRP	DIESEL 0.05%	DIESEL 0.005%	ILL. PAR.
GAUTENG PUMP PRICE AS FROM 05/04/2023	2,297.000	2,264.000	-	-	-
WHOLESALE PRICE AS FROM 05/04/2023	-	-	2,088.830	2,097.230	1,472.058
SINGLE NATIONAL MAXIMUM RETAIL PRICE	-	-	-	-	1,903.000
BASIC FUEL PRICE - 14/04/2023	1,321.716	1,296.882	1,225.751	1,271.063	1,250.887
PRESS RELEASE CONTRIBUTION TO BFP 05/04/2023 - 14/04/2023	1,243.430	1,210.430	1,263.630	1,272.030	1,239.128
UNIT OVER/(UNDER) RECOVERY - 14/04/2023	(78.286)	(86.452)	37.879	0.967	(11.759)
AVERAGE BASIC FUEL PRICE 31/03/2023 - 14/04/2023	1,321.764	1,297.276	1,246.353	1,275.308	1,242.876
AVERAGE UNIT OVER/(UNDER) RECOVERY 31/03/2023 - 14/04/2023	(77.947)	(85.641)	38.277	17.995	34.161

ANALYSIS MOVEMENT OF AVERAGE OVER/(UNDER) RECOVERY

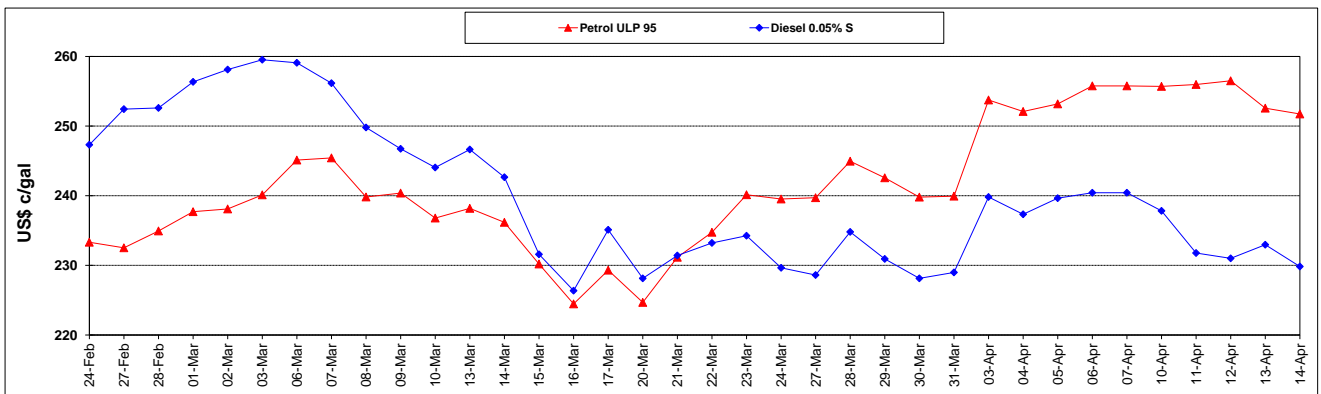
	PETROL 95	PETROL 93	DIESEL 0.05%	DIESEL 0.005%	ILL. PAR.
- MOVEMENT IN INTERNATIONAL PRODUCT PRICES	(92.873)	(100.291)	24.202	3.593	20.126
- MOVEMENT IN EXCHANGE RATE	14.926	14.650	14.075	14.402	14.035
AVERAGE UNIT OVER/(UNDER) RECOVERY 31/03/2023 - 14/04/2023	(77.947)	(85.641)	38.277	17.995	34.161

R/\$ EXCHANGE RATE - (R/\$18.1180 - 14/04/2023)

EXCHANGE RATE USED IN BASIC FUEL PRICE



INTERNATIONAL PRODUCT PRICES OF BASKET USED IN BASIC FUEL PRICE



BASIC FUEL PRICE IN SA CENTS PER LITRE

