

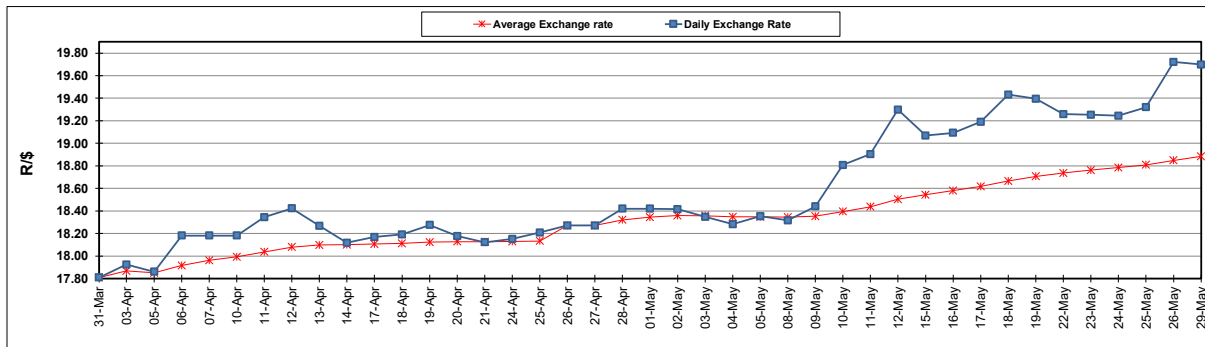
South African Cents per Litre (SA c/l)	PETROL 95 ULP	PETROL 93 ULP & LRP	DIESEL 0.05%	DIESEL 0.005%	ILL. PAR.
GAUTENG PUMP PRICE AS FROM 03/05/2023	2,334.000	2,301.000	-	-	-
WHOLESALE PRICE AS FROM 03/05/2023	-	-	2,015.290	2,049.690	1,439.058
SINGLE NATIONAL MAXIMUM RETAIL PRICE	-	-	-	-	1,859.000
BASIC FUEL PRICE - 29/05/2023	1,315.598	1,271.136	1,212.480	1,246.403	1,231.073
PRESS RELEASE CONTRIBUTION TO BFP 03/05/2023 - 29/05/2023	1,295.970	1,262.970	1,205.630	1,240.030	1,206.128
UNIT OVER/(UNDER) RECOVERY - 29/05/2023	(19.628)	(8.166)	(6.850)	(6.373)	(24.945)
AVERAGE BASIC FUEL PRICE 26/04/2023 - 29/05/2023	1,207.675	1,173.088	1,127.070	1,160.572	1,166.195
AVERAGE UNIT OVER/(UNDER) RECOVERY 26/04/2023 - 29/05/2023	77.349	78.936	90.643	86.125	46.808

ANALYSIS MOVEMENT OF AVERAGE OVER/(UNDER) RECOVERY

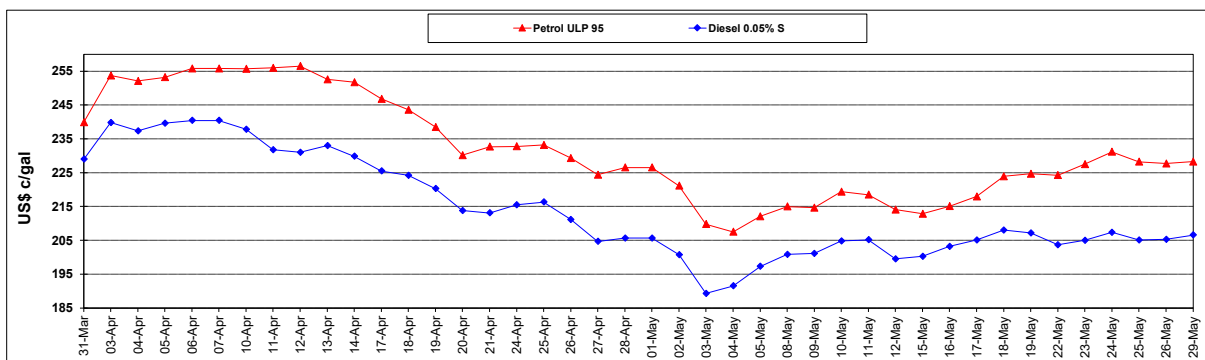
	PETROL 95	PETROL 93	DIESEL 0.05%	DIESEL 0.005%	ILL. PAR.
- MOVEMENT IN INTERNATIONAL PRODUCT PRICES	125.377	125.588	135.465	132.280	93.186
- MOVEMENT IN EXCHANGE RATE	(48.028)	(46.652)	(44.822)	(46.155)	(46.378)
AVERAGE UNIT OVER/(UNDER) RECOVERY 26/04/2023 - 29/05/2023	77.349	78.936	90.643	86.125	46.808

R/\$ EXCHANGE RATE - (R/\$19.6993 - 29/05/2023)

EXCHANGE RATE USED IN BASIC FUEL PRICE



INTERNATIONAL PRODUCT PRICES OF BASKET USED IN BASIC FUEL PRICE



BASIC FUEL PRICE IN SA CENTS PER LITRE

