

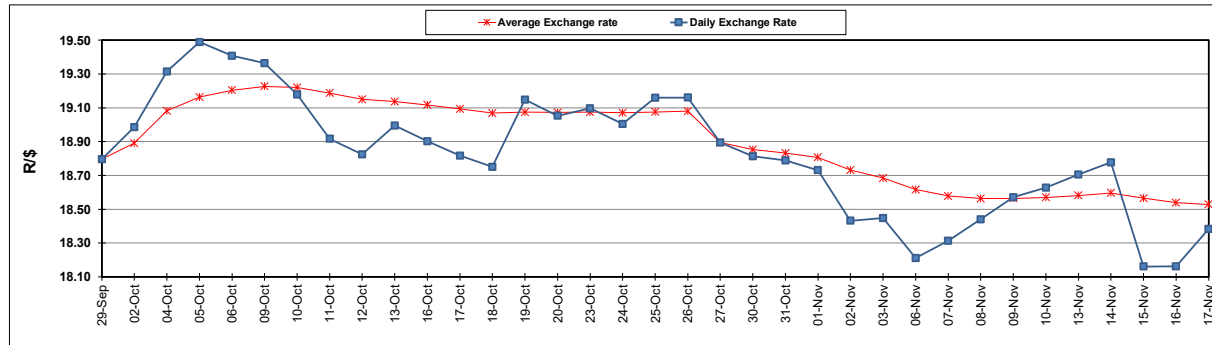
South African Cents per Litre (SA c/l)	PETROL 95 ULP	PETROL 93 ULP & LRP	DIESEL 0.05%	DIESEL 0.005%	ILL. PAR.
GAUTENG PUMP PRICE AS FROM 01/11/2023	2,390.000	2,344.000	-	-	-
WHOLESALE PRICE AS FROM 01/11/2023	-	-	2,416.910	2,440.310	1,795.058
SINGLE NATIONAL MAXIMUM RETAIL PRICE	-	-	-	-	2,333.000
BASIC FUEL PRICE - 17/11/2023	1,167.993	1,117.650	1,273.696	1,290.131	1,334.405
PRESS RELEASE CONTRIBUTION TO BFP 01/11/2023 - 17/11/2023	1,295.350	1,249.350	1,555.630	1,579.030	1,562.128
UNIT OVER/(UNDER) RECOVERY - 17/11/2023	127.357	131.700	281.934	288.899	227.723
AVERAGE BASIC FUEL PRICE 27/10/2023 - 17/11/2023	1,223.882	1,178.677	1,354.773	1,372.413	1,396.870
AVERAGE UNIT OVER/(UNDER) RECOVERY 27/10/2023 - 17/11/2023	108.953	108.158	220.920	226.117	183.446

ANALYSIS MOVEMENT OF AVERAGE OVER/(UNDER) RECOVERY

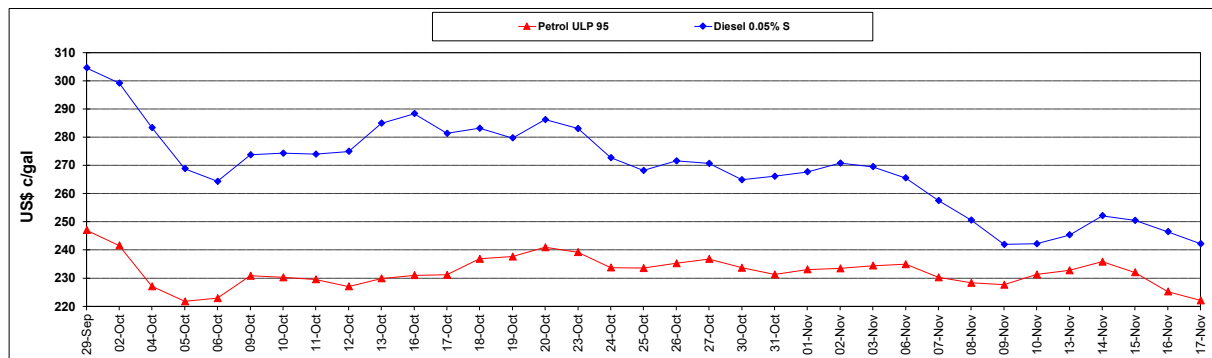
	PETROL 95	PETROL 93	DIESEL 0.05%	DIESEL 0.005%	ILL. PAR.
- MOVEMENT IN INTERNATIONAL PRODUCT PRICES	72.564	73.113	180.640	185.312	141.914
- MOVEMENT IN EXCHANGE RATE	36.389	35.045	40.280	40.805	41.532
AVERAGE UNIT OVER/(UNDER) RECOVERY 27/10/2023 - 17/11/2023	108.953	108.158	220.920	226.117	183.446

R/\$ EXCHANGE RATE - (R/\$18.3843 - 17/11/2023)

EXCHANGE RATE USED IN BASIC FUEL PRICE



INTERNATIONAL PRODUCT PRICES OF BASKET USED IN BASIC FUEL PRICE



BASIC FUEL PRICE IN SA CENTS PER LITRE

