

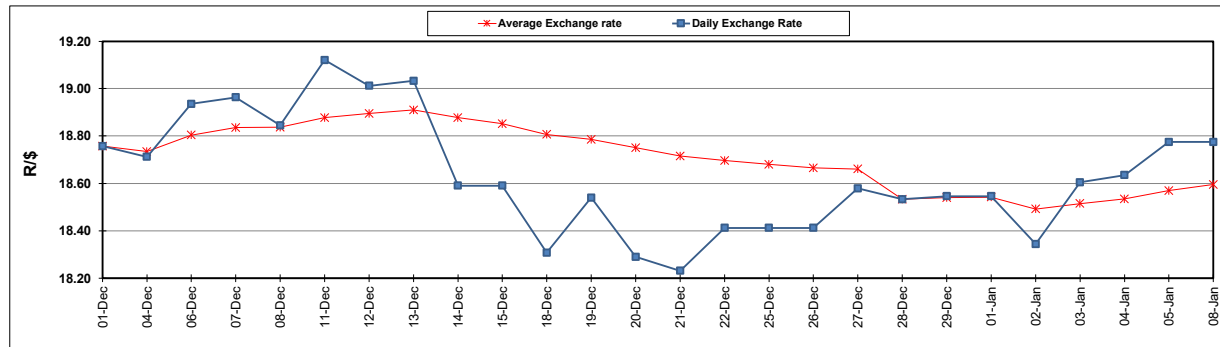
South African Cents per Litre (SA c/l)	PETROL 95 ULP	PETROL 93 ULP & LRP	DIESEL 0.05%	DIESEL 0.005%	ILL. PAR.
GAUTENG PUMP PRICE AS FROM 03/01/2024	2,249.000	2,217.000	-	-	-
WHOLESALE PRICE AS FROM 03/01/2024	-	-	2,063.170	2,072.570	1,530.938
SINGLE NATIONAL MAXIMUM RETAIL PRICE	-	-	-	-	1,981.000
BASIC FUEL PRICE - 08/01/2024	1,146.756	1,113.342	1,264.201	1,269.746	1,305.409
PRESS RELEASE CONTRIBUTION TO BFP 03/01/2024 - 08/01/2024	1,146.870	1,114.870	1,240.630	1,250.030	1,284.128
UNIT OVER/(UNDER) RECOVERY - 08/01/2024	0.114	1.528	(23.571)	(19.716)	(21.281)
AVERAGE BASIC FUEL PRICE 28/12/2023 - 08/01/2024	1,166.163	1,135.107	1,261.120	1,267.751	1,292.802
AVERAGE UNIT OVER/(UNDER) RECOVERY 28/12/2023 - 08/01/2024	5.547	(2.397)	25.510	32.279	37.826

### ANALYSIS MOVEMENT OF AVERAGE OVER/(UNDER) RECOVERY

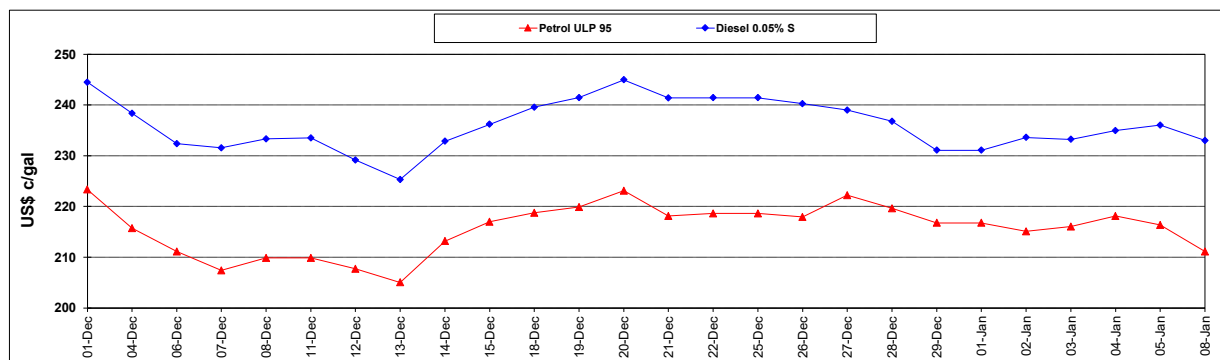
	PETROL 95	PETROL 93	DIESEL 0.05%	DIESEL 0.005%	ILL. PAR.
- MOVEMENT IN INTERNATIONAL PRODUCT PRICES	1.414	(6.420)	21.041	27.786	33.244
- MOVEMENT IN EXCHANGE RATE	4.133	4.023	4.469	4.493	4.582
AVERAGE UNIT OVER/(UNDER) RECOVERY 28/12/2023 - 08/01/2024	5.547	(2.397)	25.510	32.279	37.826

### R/\$ EXCHANGE RATE - (R/\$18.7750 - 08/01/2024)

#### EXCHANGE RATE USED IN BASIC FUEL PRICE



#### INTERNATIONAL PRODUCT PRICES OF BASKET USED IN BASIC FUEL PRICE



#### BASIC FUEL PRICE IN SA CENTS PER LITRE

