

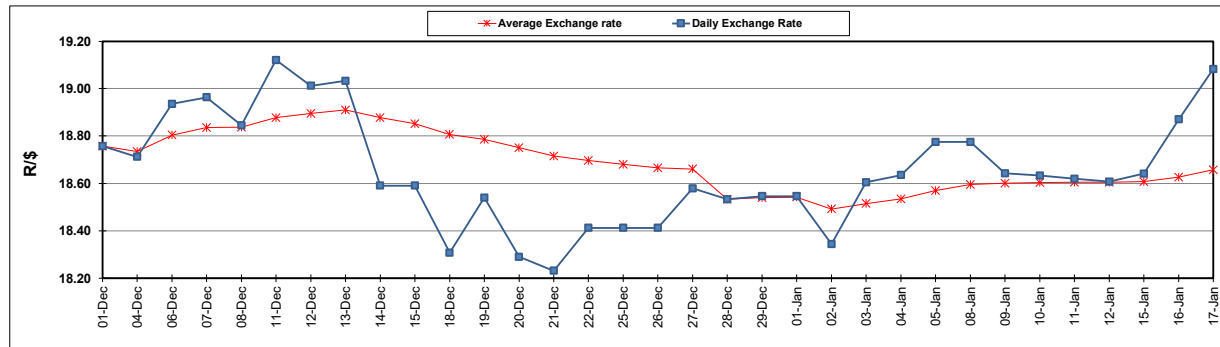
South African Cents per Litre (SA c/l)	PETROL 95 ULP	PETROL 93 ULP & LRP	DIESEL 0.05%	DIESEL 0.005%	ILL. PAR.
GAUTENG PUMP PRICE AS FROM 03/01/2024	2,249.000	2,217.000	-	-	-
WHOLESALE PRICE AS FROM 03/01/2024	-	-	2,063.170	2,072.570	1,530.938
SINGLE NATIONAL MAXIMUM RETAIL PRICE	-	-	-	-	1,981.000
BASIC FUEL PRICE - 17/01/2024	1,221.307	1,180.341	1,339.574	1,346.850	1,379.892
PRESS RELEASE CONTRIBUTION TO BFP 03/01/2024 - 17/01/2024	1,146.870	1,114.870	1,240.630	1,250.030	1,284.128
UNIT OVER/(UNDER) RECOVERY - 17/01/2024	(74.437)	(65.471)	(98.944)	(96.820)	(95.764)
AVERAGE BASIC FUEL PRICE 28/12/2023 - 17/01/2024	1,179.543	1,145.478	1,286.557	1,292.415	1,319.515
AVERAGE UNIT OVER/(UNDER) RECOVERY 28/12/2023 - 17/01/2024	(19.425)	(21.093)	(21.394)	(15.718)	(10.587)

### ANALYSIS MOVEMENT OF AVERAGE OVER/(UNDER) RECOVERY

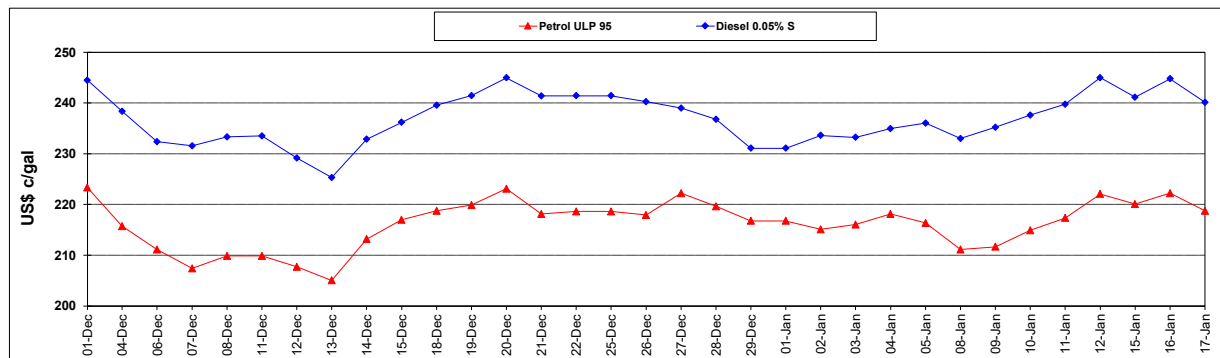
	PETROL 95	PETROL 93	DIESEL 0.05%	DIESEL 0.005%	ILL. PAR.
- MOVEMENT IN INTERNATIONAL PRODUCT PRICES	(19.665)	(21.326)	(21.656)	(15.981)	(10.856)
- MOVEMENT IN EXCHANGE RATE	0.240	0.233	0.262	0.263	0.269
AVERAGE UNIT OVER/(UNDER) RECOVERY 28/12/2023 - 17/01/2024	(19.425)	(21.093)	(21.394)	(15.718)	(10.587)

### R/\$ EXCHANGE RATE - (R/\$19.0825 - 17/01/2024)

#### EXCHANGE RATE USED IN BASIC FUEL PRICE



#### INTERNATIONAL PRODUCT PRICES OF BASKET USED IN BASIC FUEL PRICE



#### BASIC FUEL PRICE IN SA CENTS PER LITRE

