

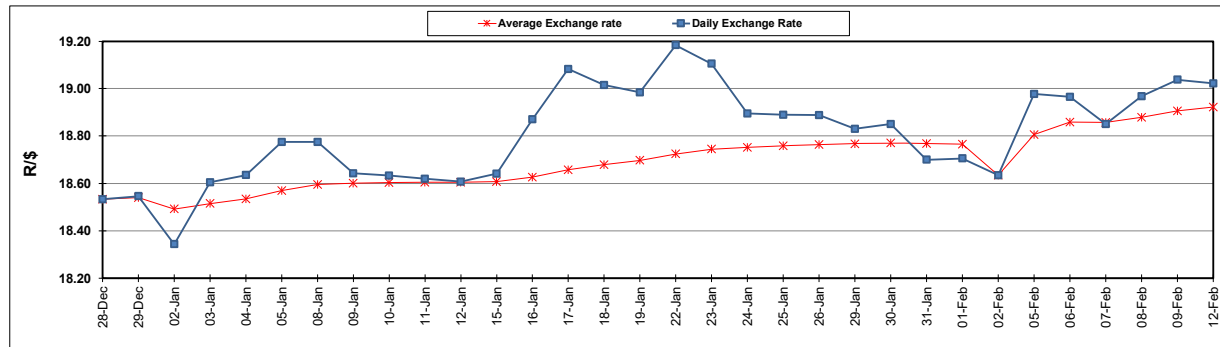
South African Cents per Litre (SA c/l)	PETROL 95 ULP	PETROL 93 ULP & LRP	DIESEL 0.05%	DIESEL 0.005%	ILL. PAR.
GAUTENG PUMP PRICE AS FROM 07/02/2024	2,324.000	2,292.000	-	-	-
WHOLESALE PRICE AS FROM 07/02/2024	-	-	2,136.170	2,142.570	1,583.938
SINGLE NATIONAL MAXIMUM RETAIL PRICE AS FROM 07/02/2024	-	-	-	-	2,052.000
BASIC FUEL PRICE - 12/02/2024	1,358.742	1,325.349	1,464.430	1,491.246	1,443.577
PRESS RELEASE CONTRIBUTION TO BFP 07/02/2024 - 12/02/2024	1,221.870	1,189.870	1,313.630	1,320.030	1,337.128
UNIT OVER/(UNDER) RECOVERY - 12/02/2024	(136.872)	(135.479)	(150.800)	(171.216)	(106.449)
AVERAGE BASIC FUEL PRICE 02/02/2024 - 12/02/2024	1,324.741	1,288.486	1,426.240	1,448.594	1,411.004
AVERAGE UNIT OVER/(UNDER) RECOVERY 02/02/2024 - 12/02/2024	(135.014)	(130.759)	(143.896)	(158.564)	(96.590)

### ANALYSIS MOVEMENT OF AVERAGE OVER/(UNDER) RECOVERY

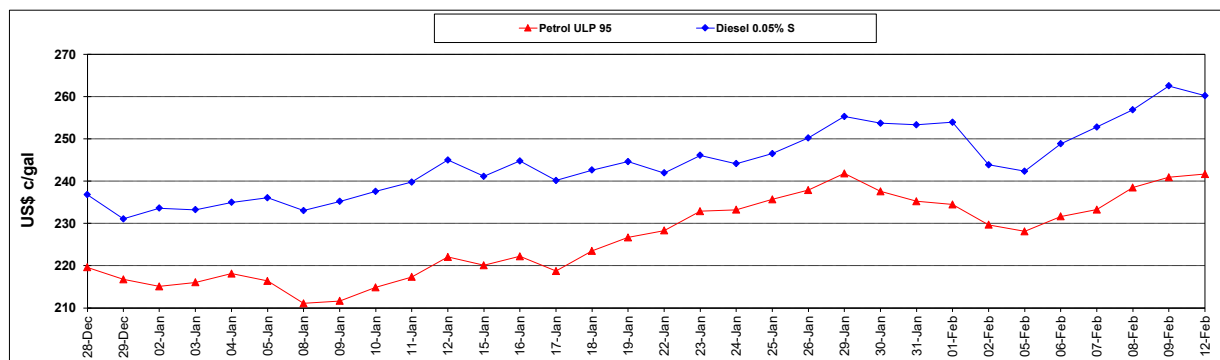
	PETROL 95	PETROL 93	DIESEL 0.05%	DIESEL 0.005%	ILL. PAR.
- MOVEMENT IN INTERNATIONAL PRODUCT PRICES	(124.057)	(120.102)	(132.100)	(146.583)	(84.920)
- MOVEMENT IN EXCHANGE RATE	(10.957)	(10.657)	(11.796)	(11.981)	(11.670)
AVERAGE UNIT OVER/(UNDER) RECOVERY 02/02/2024 - 12/02/2024	(135.014)	(130.759)	(143.896)	(158.564)	(96.590)

### R/\$ EXCHANGE RATE - (R/\$19.0223 - 12/02/2024)

#### EXCHANGE RATE USED IN BASIC FUEL PRICE



#### INTERNATIONAL PRODUCT PRICES OF BASKET USED IN BASIC FUEL PRICE



#### BASIC FUEL PRICE IN SA CENTS PER LITRE

