

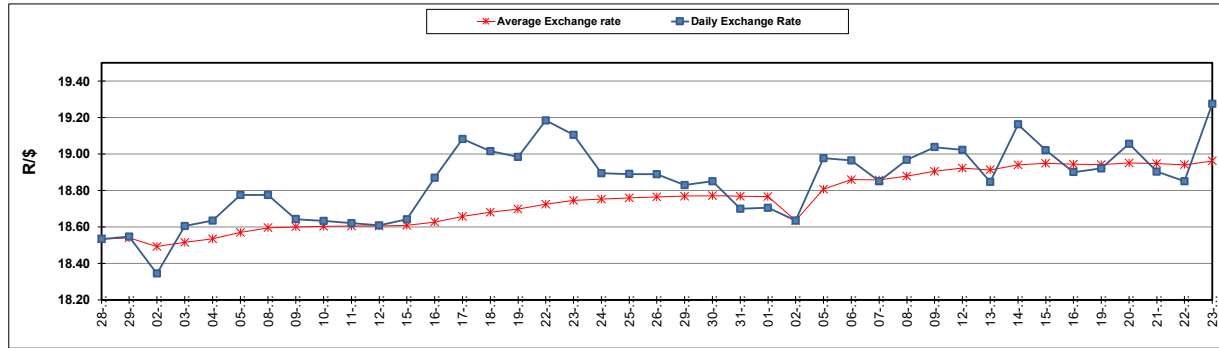
South African Cents per Litre (SA c/l)	PETROL 95 ULP	PETROL 93 ULP & LRP	DIESEL 0.05%	DIESEL 0.005%	ILL. PAR.
GAUTENG PUMP PRICE AS FROM 07/02/2024	2,324.000	2,292.000	-	-	-
WHOLESALE PRICE AS FROM 07/02/2024	-	-	2,136.170	2,142.570	1,583.938
SINGLE NATIONAL MAXIMUM RETAIL PRICE AS FROM 07/02/2024	-	-	-	-	2,052.000
BASIC FUEL PRICE - 23/02/2024	1,348.200	1,310.231	1,403.382	1,418.916	1,388.908
PRESS RELEASE CONTRIBUTION TO BFP 07/02/2024 - 23/02/2024	1,221.870	1,189.870	1,313.630	1,320.030	1,337.128
UNIT OVER/(UNDER) RECOVERY - 23/02/2024	(126.330)	(120.361)	(89.752)	(98.886)	(51.780)
AVERAGE BASIC FUEL PRICE 02/02/2024 - 23/02/2024	1,324.975	1,288.869	1,412.202	1,433.534	1,395.767
AVERAGE UNIT OVER/(UNDER) RECOVERY 02/02/2024 - 23/02/2024	(117.167)	(113.061)	(112.259)	(126.629)	(68.576)

ANALYSIS MOVEMENT OF AVERAGE OVER/(UNDER) RECOVERY

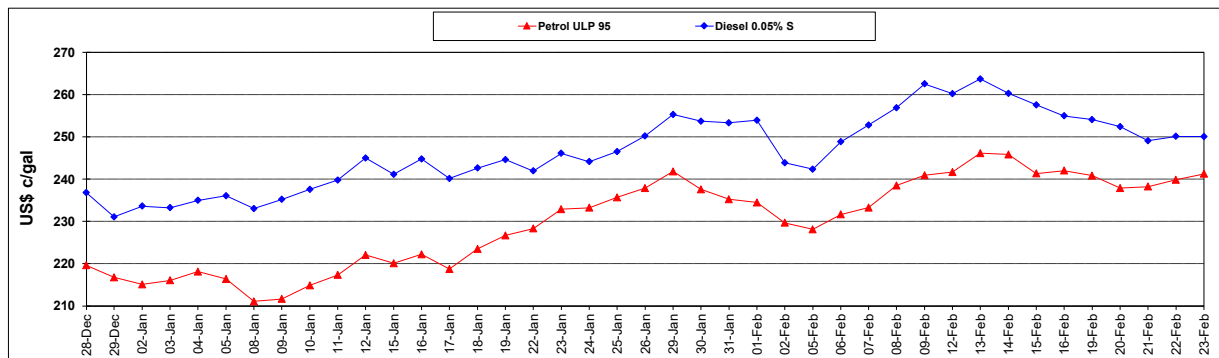
	PETROL 95	PETROL 93	DIESEL 0.05%	DIESEL 0.005%	ILL. PAR.
- MOVEMENT IN INTERNATIONAL PRODUCT PRICES	(103.450)	(99.718)	(97.639)	(111.788)	(54.126)
- MOVEMENT IN EXCHANGE RATE	(13.717)	(13.343)	(14.620)	(14.841)	(14.450)
AVERAGE UNIT OVER/(UNDER) RECOVERY 02/02/2024 - 23/02/2024	(117.167)	(113.061)	(112.259)	(126.629)	(68.576)

R/\$ EXCHANGE RATE - (R/\$19.2753 - 23/02/2024)

EXCHANGE RATE USED IN BASIC FUEL PRICE



INTERNATIONAL PRODUCT PRICES OF BASKET USED IN BASIC FUEL PRICE



BASIC FUEL PRICE IN SA CENTS PER LITRE

