

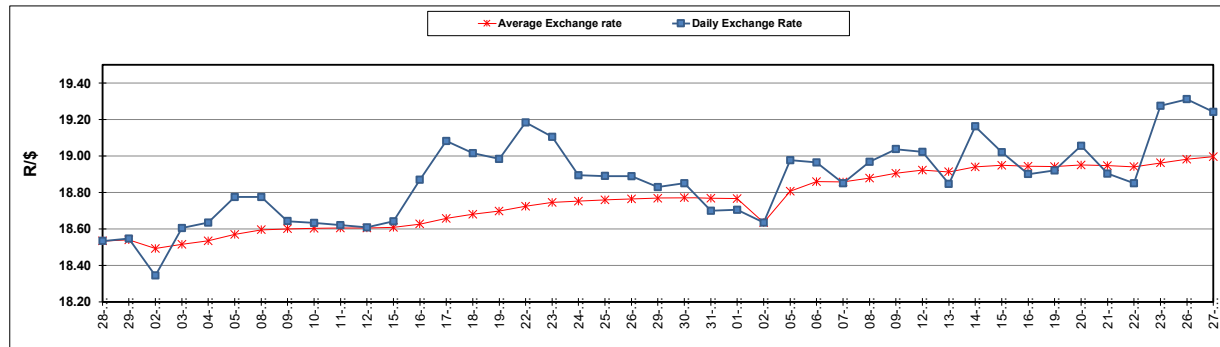
South African Cents per Litre (SA c/l)	PETROL 95 ULP	PETROL 93 ULP & LRP	DIESEL 0.05%	DIESEL 0.005%	ILL. PAR.
GAUTENG PUMP PRICE AS FROM 07/02/2024	2,324.000	2,292.000	-	-	-
WHOLESALE PRICE AS FROM 07/02/2024	-	-	2,136.170	2,142.570	1,583.938
SINGLE NATIONAL MAXIMUM RETAIL PRICE AS FROM 07/02/2024	-	-	-	-	2,052.000
BASIC FUEL PRICE - 27/02/2024	1,366.390	1,328.485	1,414.405	1,427.871	1,401.651
PRESS RELEASE CONTRIBUTION TO BFP 07/02/2024 - 27/02/2024	1,221.870	1,189.870	1,313.630	1,320.030	1,337.128
UNIT OVER/(UNDER) RECOVERY - 27/02/2024	(144.520)	(138.615)	(100.775)	(107.841)	(64.523)
AVERAGE BASIC FUEL PRICE 02/02/2024 - 27/02/2024	1,328.393	1,292.080	1,411.650	1,432.100	1,395.559
AVERAGE UNIT OVER/(UNDER) RECOVERY 02/02/2024 - 27/02/2024	(119.023)	(114.710)	(110.187)	(123.737)	(67.264)

ANALYSIS MOVEMENT OF AVERAGE OVER/(UNDER) RECOVERY

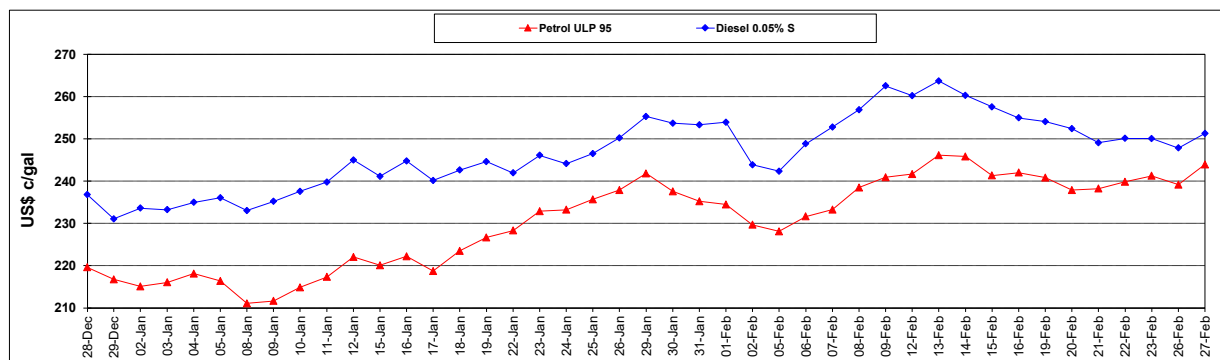
	PETROL 95	PETROL 93	DIESEL 0.05%	DIESEL 0.005%	ILL. PAR.
- MOVEMENT IN INTERNATIONAL PRODUCT PRICES	(102.849)	(98.978)	(92.999)	(106.300)	(50.272)
- MOVEMENT IN EXCHANGE RATE	(16.174)	(15.732)	(17.188)	(17.437)	(16.992)
AVERAGE UNIT OVER/(UNDER) RECOVERY 02/02/2024 - 27/02/2024	(119.023)	(114.710)	(110.187)	(123.737)	(67.264)

R/\$ EXCHANGE RATE - (R/\$19.2425 - 27/02/2024)

EXCHANGE RATE USED IN BASIC FUEL PRICE



INTERNATIONAL PRODUCT PRICES OF BASKET USED IN BASIC FUEL PRICE



BASIC FUEL PRICE IN SA CENTS PER LITRE

