

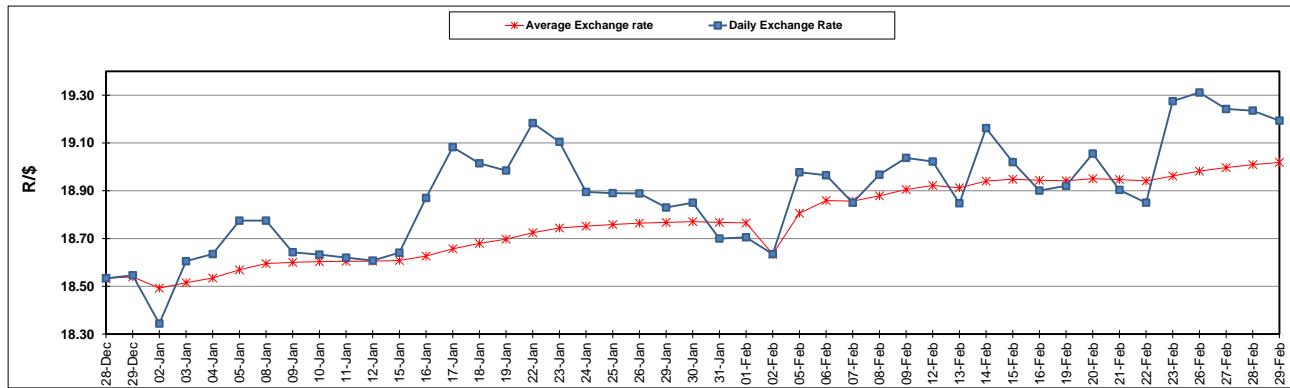
South African Cents per Litre (SA c/l)	PETROL 95 ULP	PETROL 93 ULP & LRP	DIESEL 0.05%	DIESEL 0.005%	ILL. PAR.
GAUTENG PUMP PRICE AS FROM 07/02/2024	2,324.000	2,292.000	-	-	-
WHOLESALE PRICE AS FROM 07/02/2024	-	-	2,136.170	2,142.570	1,583.938
SINGLE NATIONAL MAXIMUM RETAIL PRICE AS FROM 07/02/2024	-	-	-	-	2,052.000
BASIC FUEL PRICE - 29/02/2024	1,352.645	1,314.836	1,373.026	1,385.621	1,362.888
PRESS RELEASE CONTRIBUTION TO BFP 07/02/2024 - 29/02/2024	1,221.870	1,189.870	1,313.630	1,320.030	1,337.128
UNIT OVER/(UNDER) RECOVERY - 29/02/2024	(130.775)	(124.966)	(59.396)	(65.591)	(25.760)
AVERAGE BASIC FUEL PRICE 02/02/2024 - 29/02/2024	1,331.048	1,294.581	1,408.167	1,427.865	1,392.512
AVERAGE UNIT OVER/(UNDER) RECOVERY 02/02/2024 - 29/02/2024	(120.428)	(115.961)	(105.487)	(118.335)	(63.334)

ANALYSIS MOVEMENT OF AVERAGE OVER/(UNDER) RECOVERY

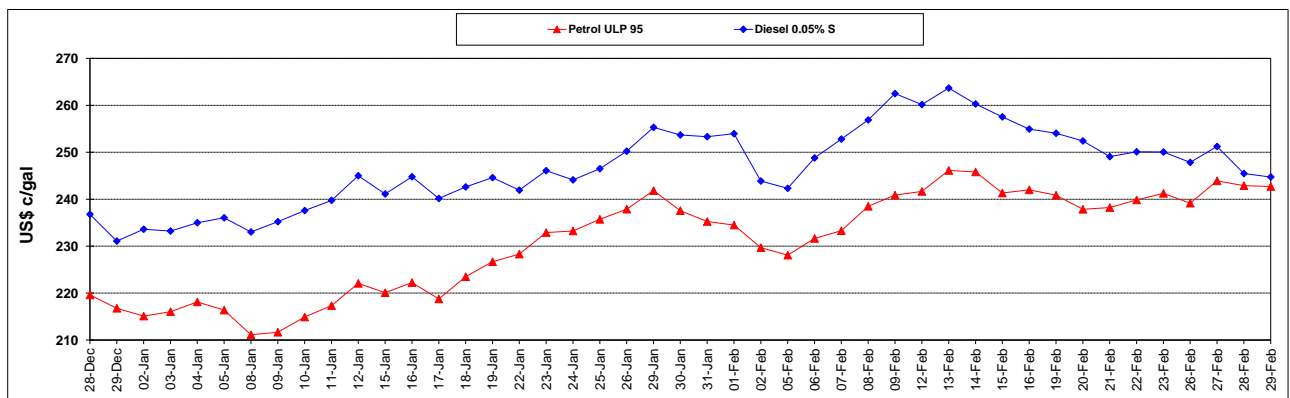
	PETROL 95	PETROL 93	DIESEL 0.05%	DIESEL 0.005%	ILL. PAR.
- MOVEMENT IN INTERNATIONAL PRODUCT PRICES	(102.714)	(98.733)	(86.747)	(99.333)	(44.802)
- MOVEMENT IN EXCHANGE RATE	(17.714)	(17.228)	(18.740)	(19.002)	(18.532)
AVERAGE UNIT OVER/(UNDER) RECOVERY 02/02/2024 - 29/02/2024	(120.428)	(115.961)	(105.487)	(118.335)	(63.334)

R/\$ EXCHANGE RATE - (R/\$19.1935 - 29/02/2024)

EXCHANGE RATE USED IN BASIC FUEL PRICE



INTERNATIONAL PRODUCT PRICES OF BASKET USED IN BASIC FUEL PRICE



BASIC FUEL PRICE IN SA CENTS PER LITRE

