

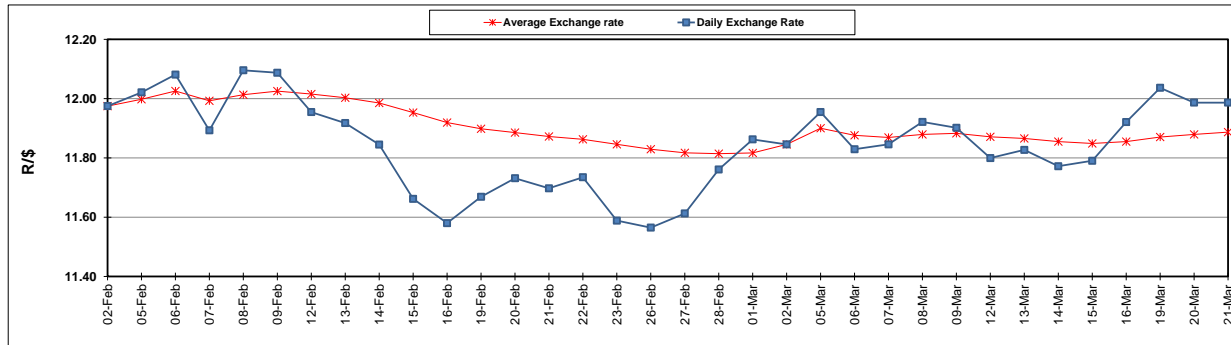
	PETROL 95 ULP	PETROL 93 ULP & LRP	DIESEL 0.05%	DIESEL 0.005%	ILL. PAR.
GAUTENG PUMP PRICE (SA c/l) AS FROM 07/03/2018	1 376.000	1 354.000	-	-	-
WHOLESALE PRICE (SA c/l) AS FROM 07/03/2018	-	-	1 209.630	1 215.030	795.388
SINGLE NATIONAL MAXIMUM RETAIL PRICE	-	-	-	-	1 026.000
BASIC FUEL PRICE - 21/03/2018 (SA c/l)	630.026	612.953	637.035	641.345	643.266
PRESS RELEASE CONTRIBUTION TO BFP 07/03/2018 - 21/03/2018 (SA c/l)	586.170	574.170	598.630	604.030	625.128
UNIT OVER/(UNDER) RECOVERY - 21/03/2018 (SA c/l)	(43.856)	(38.783)	(38.405)	(37.315)	(18.138)
AVERAGE BASIC FUEL PRICE 02/03/2018 - 21/03/2018	596.467	582.323	604.332	608.983	620.953
AVERAGE UNIT OVER/(UNDER) RECOVERY 02/03/2018 - 21/03/2018	(2.583)	(0.439)	4.369	4.476	9.103

ANALYSIS MOVEMENT OF AVERAGE OVER/(UNDER) RECOVERY

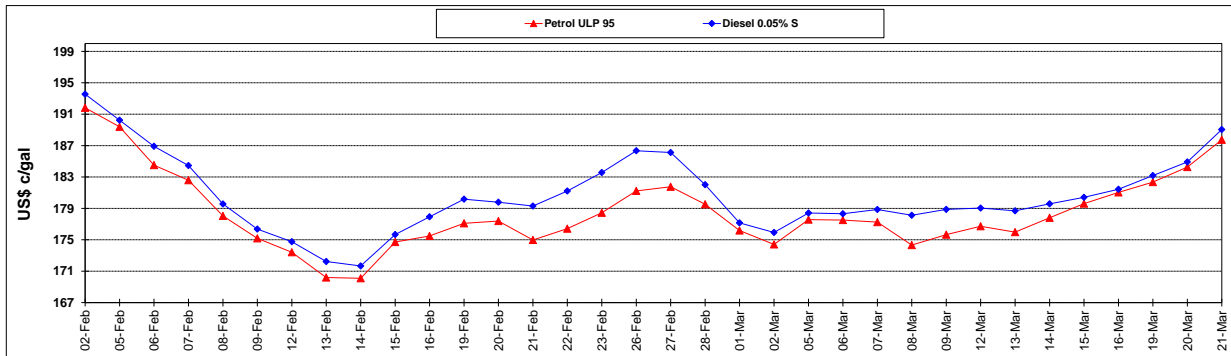
	PETROL 95	PETROL 93	DIESEL 0.05%	DIESEL 0.005%	ILL. PAR.
- MOVEMENT IN INTERNATIONAL PRODUCT PRICES	0.940	3.000	7.938	8.072	12.771
- MOVEMENT IN EXCHANGE RATE	(3.523)	(3.439)	(3.569)	(3.596)	(3.667)
AVERAGE UNIT OVER/(UNDER) RECOVERY 02/03/2018 - 21/03/2018	(2.583)	(0.439)	4.369	4.476	9.103

R/\$ EXCHANGE RATE - (R/\$11.9865 - 21/03/2018)

EXCHANGE RATE USED IN BASIC FUEL PRICE



INTERNATIONAL PRODUCT PRICES OF BASKET USED IN BASIC FUEL PRICE



BASIC FUEL PRICE IN SA CENTS PER LITRE

