

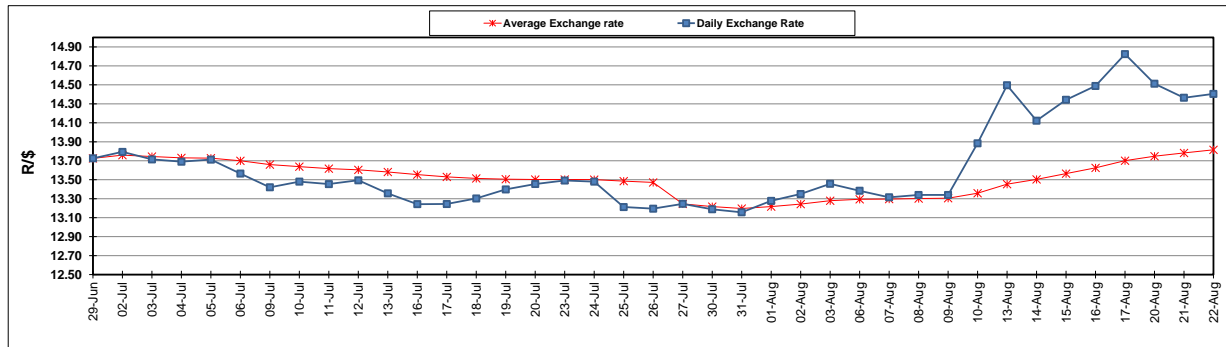
|  | PETROL 95<br>ULP | PETROL 93<br>ULP & LRP | DIESEL<br>0.05% | DIESEL<br>0.005% | ILL. PAR. |
|--|------------------|------------------------|-----------------|------------------|-----------|
| GAUTENG PUMP PRICE (SA c/l) AS FROM 04/08/2018                     | 1 603.000        | 1 582.000              | -               | -                | -         |
| WHOLESALE PRICE (SA c/l) AS FROM 04/08/2018                        | -                | -                      | 1 440.830       | 1 445.230        | 953.088   |
| SINGLE NATIONAL MAXIMUM RETAIL PRICE                               | -                | -                      | -               | -                | 1 233.000 |
| BASIC FUEL PRICE - 22/08/2018 (SA c/l)                             | 802.772          | 787.772                | 823.905         | 828.386          | 818.765   |
| PRESS RELEASE CONTRIBUTION TO BFP 01/08/2018 - 22/08/2018 (SA c/l) | 751.070          | 739.070                | 767.630         | 772.030          | 780.128   |
| UNIT OVER/(UNDER) RECOVERY - 22/08/2018 (SA c/l)                   | (51.702)         | (48.702)               | (56.275)        | (56.356)         | (38.637)  |
| AVERAGE BASIC FUEL PRICE 27/07/2018 - 22/08/2018                   | 767.098          | 752.982                | 783.810         | 788.245          | 786.375   |
| AVERAGE UNIT OVER/(UNDER) RECOVERY 27/06/2018 - 22/08/2018         | (16.186)         | (14.070)               | (15.548)        | (15.584)         | (6.879)   |

### ANALYSIS MOVEMENT OF AVERAGE OVER/(UNDER) RECOVERY

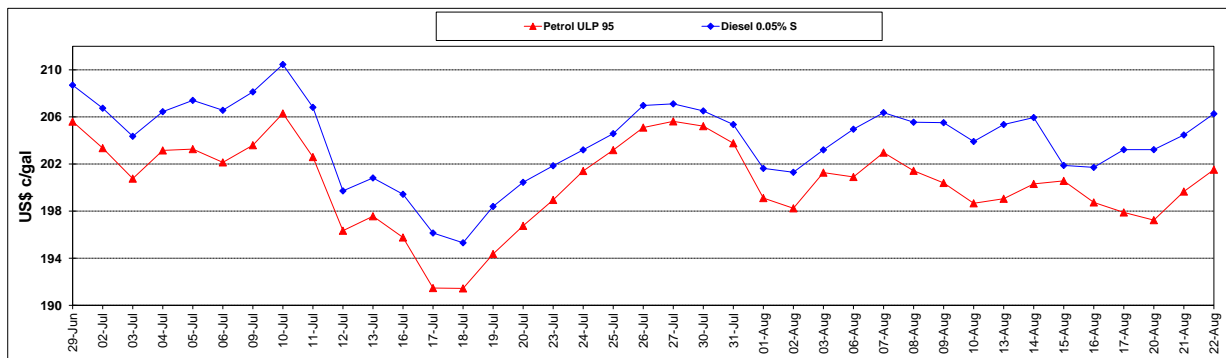
|  | PETROL 95 | PETROL 93 | DIESEL 0.05% | DIESEL 0.005% | ILL. PAR. |
|--|-----------|-----------|--------------|---------------|-----------|
| - MOVEMENT IN INTERNATIONAL PRODUCT PRICES                 | 2.920     | 4.685     | 3.974        | 4.050         | 12.707    |
| - MOVEMENT IN EXCHANGE RATE                                | (19.106)  | (18.755)  | (19.522)     | (19.633)      | (19.586)  |
| AVERAGE UNIT OVER/(UNDER) RECOVERY 27/07/2018 - 22/08/2018 | (16.186)  | (14.070)  | (15.548)     | (15.584)      | (6.879)   |

### R/\$ EXCHANGE RATE - (R/\$14.4050 - 22/08/2018)

### EXCHANGE RATE USED IN BASIC FUEL PRICE



### INTERNATIONAL PRODUCT PRICES OF BASKET USED IN BASIC FUEL PRICE



### BASIC FUEL PRICE IN SA CENTS PER LITRE

