

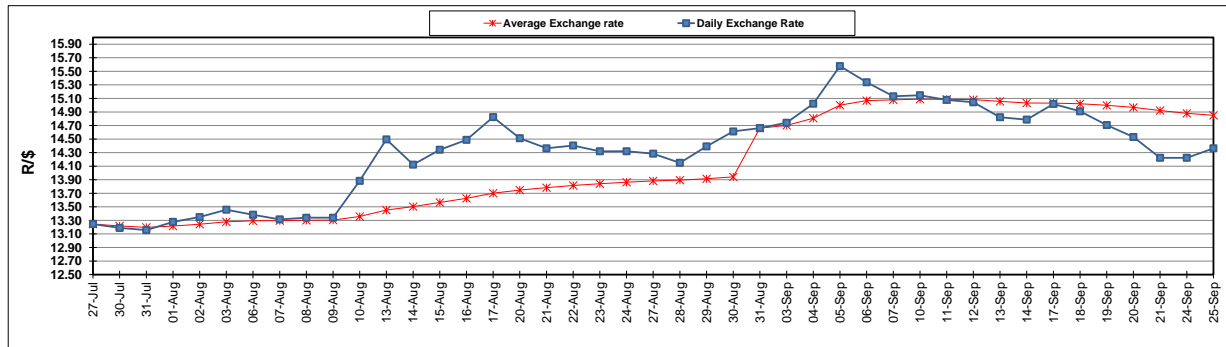
	PETROL 95 ULP	PETROL 93 ULP & LRP	DIESEL 0.05%	DIESEL 0.005%	ILL. PAR.
GAUTENG PUMP PRICE (SA c/l) AS FROM 05/09/2018	1 608.000	1 586.000	-	-	-
WHOLESALE PRICE (SA c/l) AS FROM 05/09/2018	-	-	1 440.830	1 445.230	953.088
SINGLE NATIONAL MAXIMUM RETAIL PRICE	-	-	-	-	1 233.000
BASIC FUEL PRICE - 25/09/2018 (SA c/l)	847.430	835.869	890.610	895.063	880.648
PRESS RELEASE CONTRIBUTION TO BFP 05/09/2018 - 25/09/2018 (SA c/l)	751.170	739.170	767.630	772.030	780.128
UNIT OVER/(UNDER) RECOVERY - 25/09/2018 (SA c/l)	(96.260)	(96.699)	(122.980)	(123.033)	(100.520)
AVERAGE BASIC FUEL PRICE 31/08/2018 - 25/09/2018	852.272	839.603	891.883	896.598	885.056
AVERAGE UNIT OVER/(UNDER) RECOVERY 31/08/2018 - 25/09/2018	(101.119)	(100.449)	(124.253)	(124.568)	(104.928)

ANALYSIS MOVEMENT OF AVERAGE OVER/(UNDER) RECOVERY

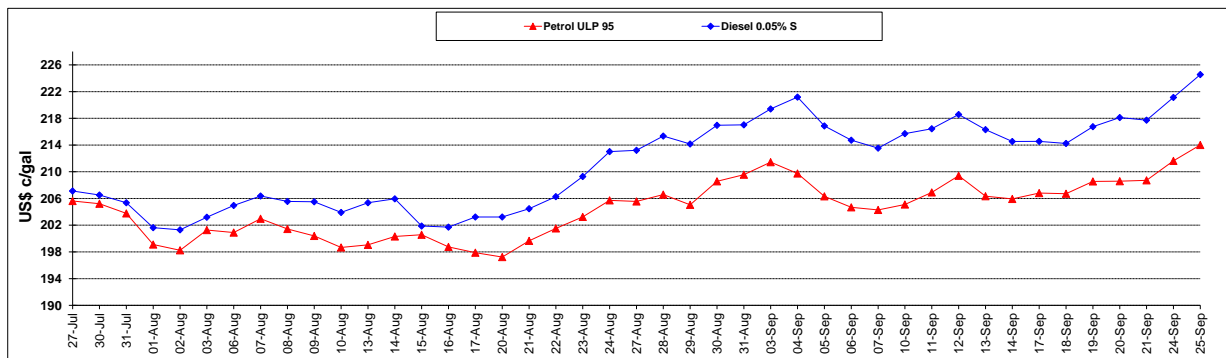
	PETROL 95	PETROL 93	DIESEL 0.05%	DIESEL 0.005%	ILL. PAR.
- MOVEMENT IN INTERNATIONAL PRODUCT PRICES	(48.978)	(49.084)	(69.689)	(69.715)	(50.782)
- MOVEMENT IN EXCHANGE RATE	(52.141)	(51.366)	(54.564)	(54.853)	(54.146)
AVERAGE UNIT OVER/(UNDER) RECOVERY 31/08/2018 - 25/09/2018	(101.119)	(100.449)	(124.253)	(124.568)	(104.928)

R/\$ EXCHANGE RATE - (R/\$14.3630 - 25/09/2018)

EXCHANGE RATE USED IN BASIC FUEL PRICE



INTERNATIONAL PRODUCT PRICES OF BASKET USED IN BASIC FUEL PRICE



BASIC FUEL PRICE IN SA CENTS PER LITRE

