

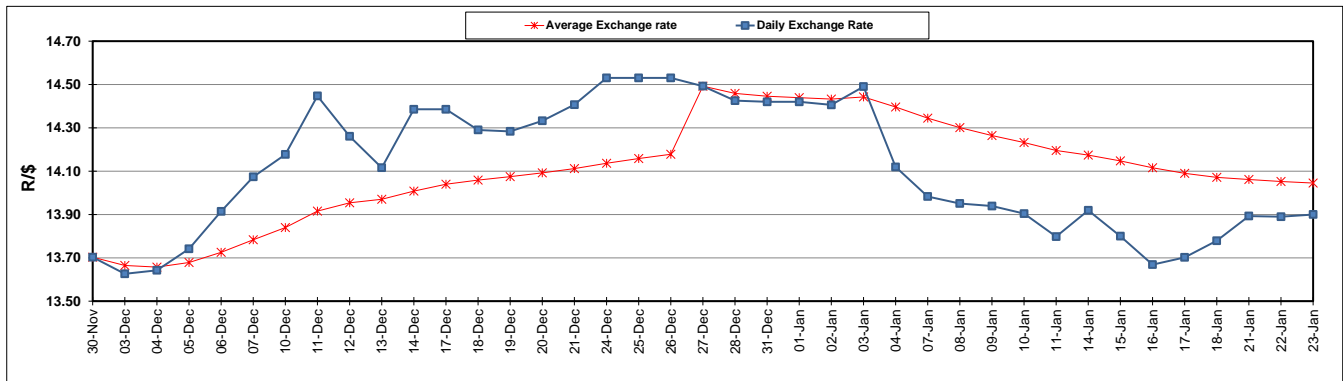
	PETROL 95 ULP	PETROL 93 ULP & LRP	DIESEL 0.05%	DIESEL 0.005%	ILL. PAR.
GAUTENG PUMP PRICE (SA c/l) AS FROM 02/01/2019	1 401.000	1 379.000	-	-	-
WHOLESALE PRICE (SA c/l) AS FROM 02/01/2019	-	-	1 313.420	1 316.820	828.678
SINGLE NATIONAL MAXIMUM RETAIL PRICE	-	-	-	-	1 067.000
BASIC FUEL PRICE - 23/01/2019 (SA c/l)	569.829	558.990	685.352	690.195	682.666
PRESS RELEASE CONTRIBUTION TO BFP 02/01/2018 - 23/01/2019 (SA c/l)	536.470	524.470	635.630	639.030	651.128
UNIT OVER/(UNDER) RECOVERY - 23/01/2019 (SA c/l)	(33.359)	(34.520)	(49.722)	(51.165)	(31.538)
AVERAGE BASIC FUEL PRICE 27/12/2018 - 23/01/2019	561.281	549.545	652.984	657.343	663.179
AVERAGE UNIT OVER/(UNDER) RECOVERY 27/12/2018 - 23/01/2019	(4.595)	(5.059)	9.046	8.487	12.549

ANALYSIS MOVEMENT OF AVERAGE OVER/(UNDER) RECOVERY

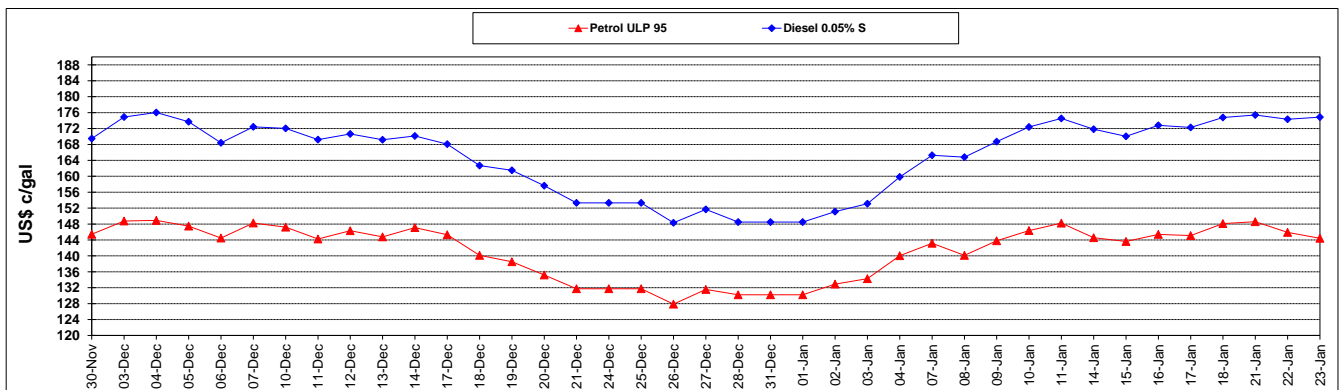
	PETROL 95	PETROL 93	DIESEL 0.005%	DIESEL 0.005%	ILL. PAR.
- MOVEMENT IN INTERNATIONAL PRODUCT PRICES	(9.902)	(10.255)	2.872	2.272	6.278
- MOVEMENT IN EXCHANGE RATE	5.307	5.196	6.174	6.215	6.271
AVERAGE UNIT OVER/(UNDER) RECOVERY 27/12/2018 - 23/01/2019	(4.595)	(5.059)	9.046	8.487	12.549

R/\$ EXCHANGE RATE - (R/\$13.9000 - 23/01/2019)

EXCHANGE RATE USED IN BASIC FUEL PRICE



INTERNATIONAL PRODUCT PRICES OF BASKET USED IN BASIC FUEL PRICE



BASIC FUEL PRICE IN SA CENTS PER LITRE

