

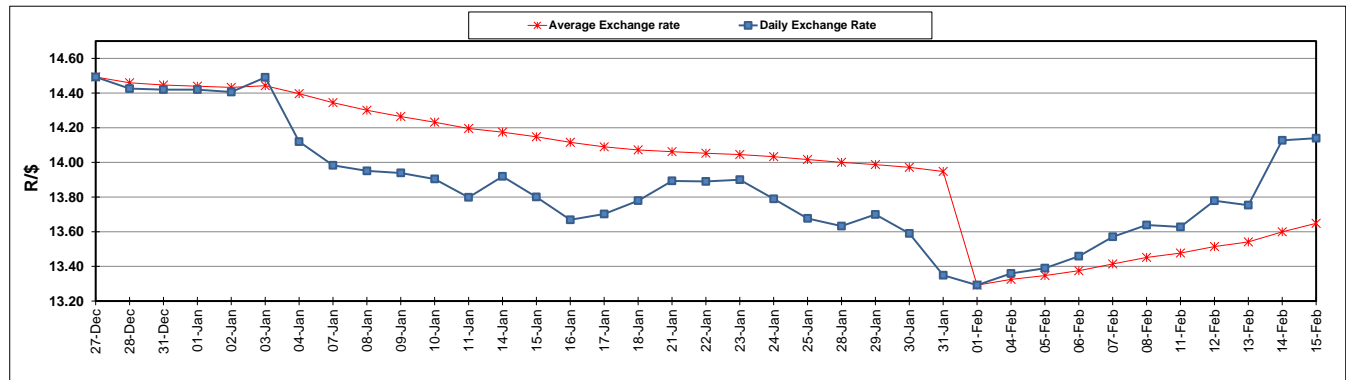
	PETROL 95 ULP	PETROL 93 ULP & LRP	DIESEL 0.05%	DIESEL 0.005%	ILL. PAR.
GAUTENG PUMP PRICE (SA c/l) AS FROM 06/02/2019	1 408.000	1 386.000	-	-	-
WHOLESALE PRICE (SA c/l) AS FROM 06/02/2019	-	-	1 314.420	1 318.820	823.678
SINGLE NATIONAL MAXIMUM RETAIL PRICE	-	-	-	-	1 060.000
BASIC FUEL PRICE - 15/02/2019 (SA c/l)	638.878	628.507	758.251	764.051	752.942
PRESS RELEASE CONTRIBUTION TO BFP 06/02/2019 - 15/02/2019 (SA c/l)	543.470	531.470	636.630	641.030	646.128
UNIT OVER/(UNDER) RECOVERY - 15/02/2019 (SA c/l)	(95.408)	(97.037)	(121.621)	(123.021)	(106.814)
AVERAGE BASIC FUEL PRICE 01/02/2019 - 15/02/2019	588.877	577.433	701.530	707.371	699.715
AVERAGE UNIT OVER/(UNDER) RECOVERY 01/02/2019 - 15/02/2019	(47.317)	(47.872)	(65.172)	(66.886)	(52.224)

### ANALYSIS MOVEMENT OF AVERAGE OVER/(UNDER) RECOVERY

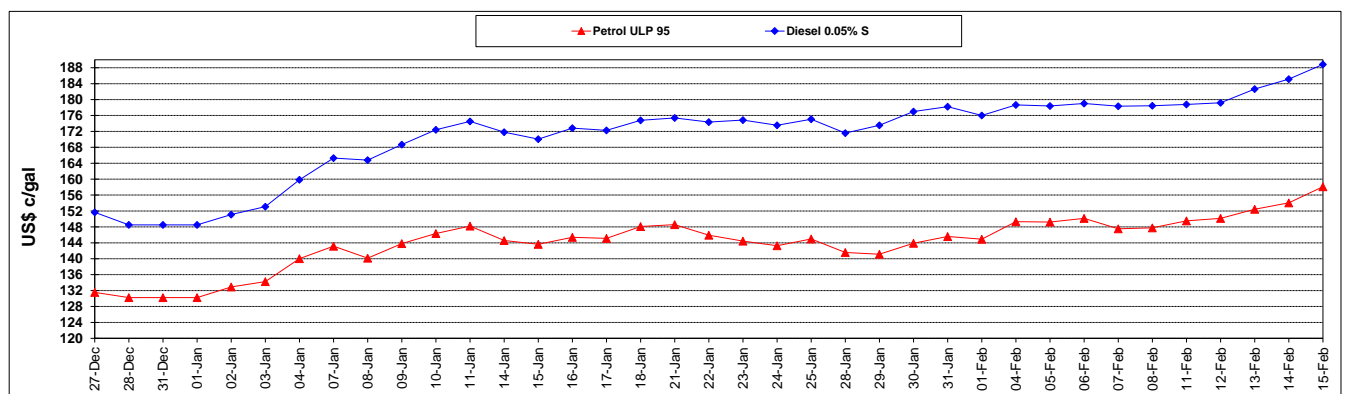
	PETROL 95	PETROL 93	DIESEL 0.05%	DIESEL 0.005%	ILL. PAR.
- MOVEMENT IN INTERNATIONAL PRODUCT PRICES	(61.252)	(61.537)	(81.775)	(83.626)	(68.782)
- MOVEMENT IN EXCHANGE RATE	13.936	13.665	16.602	16.740	16.559
AVERAGE UNIT OVER/(UNDER) RECOVERY 01/02/2019 - 15/02/2019	(47.317)	(47.872)	(65.172)	(66.886)	(52.224)

### R/\$ EXCHANGE RATE - (R/\$14.1395 - 15/02/2019)

#### EXCHANGE RATE USED IN BASIC FUEL PRICE



#### INTERNATIONAL PRODUCT PRICES OF BASKET USED IN BASIC FUEL PRICE



#### BASIC FUEL PRICE IN SA CENTS PER LITRE

