

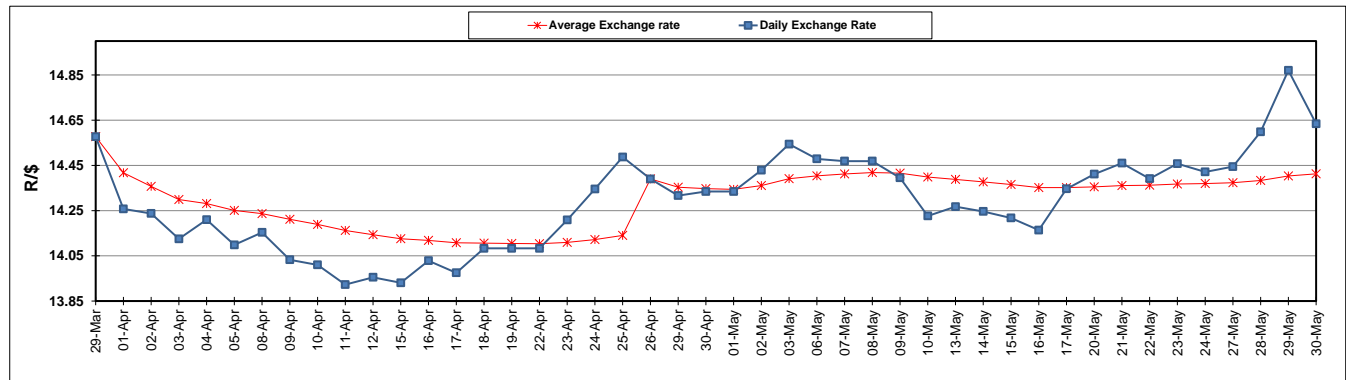
	PETROL 95 ULP	PETROL 93 ULP & LRP	DIESEL 0.05%	DIESEL 0.005%	ILL. PAR.
GAUTENG PUMP PRICE (SA c/l) AS FROM 01/05/2019	1 667.000	1 648.000	-	-	-
WHOLESALE PRICE (SA c/l) AS FROM 01/05/2019	-	-	1 488.120	1 494.520	965.678
SINGLE NATIONAL MAXIMUM RETAIL PRICE	-	-	-	-	1 231.000
BASIC FUEL PRICE - 30/05/2019 (SA c/l)	735.161	723.748	772.174	777.540	770.123
PRESS RELEASE CONTRIBUTION TO BFP 01/05/2019 - 30/05/2019 (SA c/l)	777.170	768.170	784.630	791.030	781.128
UNIT OVER/(UNDER) RECOVERY - 30/05/2019 (SA c/l)	42.009	44.422	12.456	13.490	11.005
AVERAGE BASIC FUEL PRICE 26/04/2019 - 30/05/2019	757.203	745.912	793.959	800.696	788.601
AVERAGE UNIT OVER/(UNDER) RECOVERY 26/04/2019 - 30/05/2019	13.487	15.778	(9.449)	(9.666)	(7.833)

ANALYSIS MOVEMENT OF AVERAGE OVER/(UNDER) RECOVERY

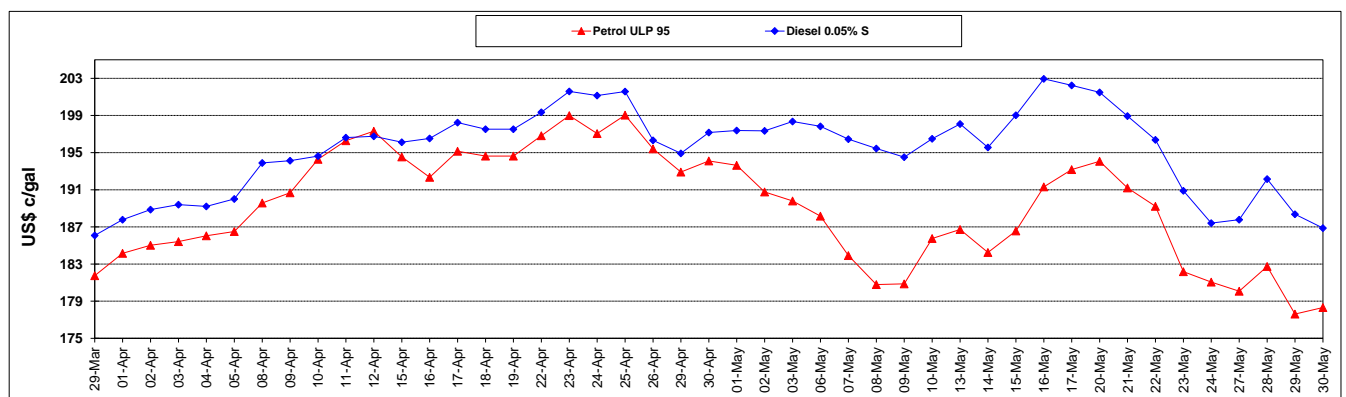
	PETROL 95	PETROL 93	DIESEL 0.05%	DIESEL 0.005%	ILL. PAR.
- MOVEMENT IN INTERNATIONAL PRODUCT PRICES	27.809	29.886	5.568	5.478	7.083
- MOVEMENT IN EXCHANGE RATE	(14.322)	(14.108)	(15.017)	(15.144)	(14.916)
AVERAGE UNIT OVER/(UNDER) RECOVERY 26/04/2019 - 30/05/2019	13.487	15.778	(9.449)	(9.666)	(7.833)

R/\$ EXCHANGE RATE - (R/\$14.6341 - 30/05/2019)

EXCHANGE RATE USED IN BASIC FUEL PRICE



INTERNATIONAL PRODUCT PRICES OF BASKET USED IN BASIC FUEL PRICE



BASIC FUEL PRICE IN SA CENTS PER LITRE

