

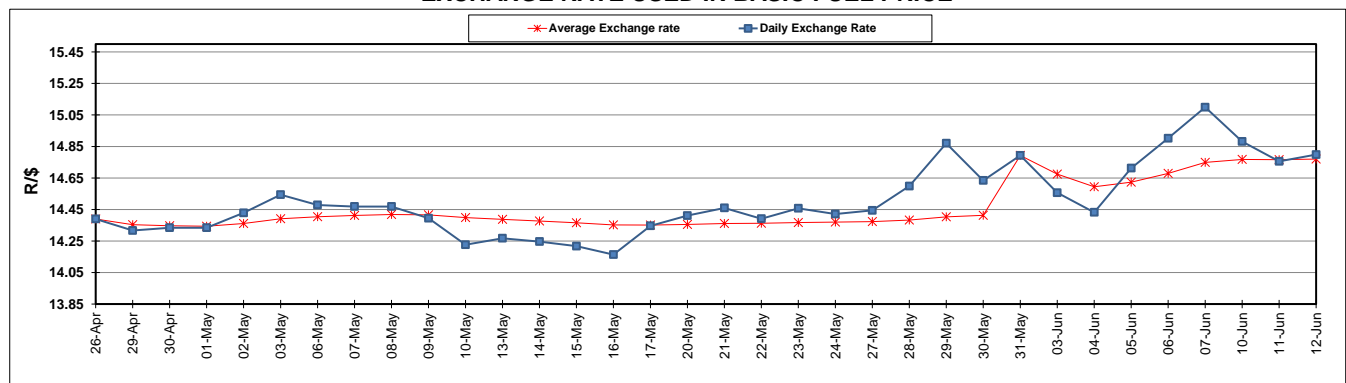
	PETROL 95 ULP	PETROL 93 ULP & LRP	DIESEL 0.05%	DIESEL 0.005%	ILL. PAR.
GAUTENG PUMP PRICE (SA c/l) AS FROM 05/06/2019	1 676.000	1 657.000	-	-	-
WHOLESALE PRICE (SA c/l) AS FROM 05/06/2019	-	-	1 521.280	1 527.680	973.678
SINGLE NATIONAL MAXIMUM RETAIL PRICE	-	-	-	-	1 241.000
BASIC FUEL PRICE - 12/09/2019 (SA c/l)	680.211	667.415	716.404	722.054	719.741
PRESS RELEASE CONTRIBUTION TO BFP 05/06/2019 - 12/09/2019 (SA c/l)	764.010	755.010	794.630	801.030	789.128
UNIT OVER/(UNDER) RECOVERY - 12/09/2019 (SA c/l)	83.799	87.595	78.226	78.976	69.387
AVERAGE BASIC FUEL PRICE 31/05/2019 - 12/09/2019	677.910	667.735	722.332	727.803	723.779
AVERAGE UNIT OVER/(UNDER) RECOVERY 31/05/2019 - 12/09/2019	90.487	91.662	68.965	69.893	62.682

ANALYSIS MOVEMENT OF AVERAGE OVER/(UNDER) RECOVERY

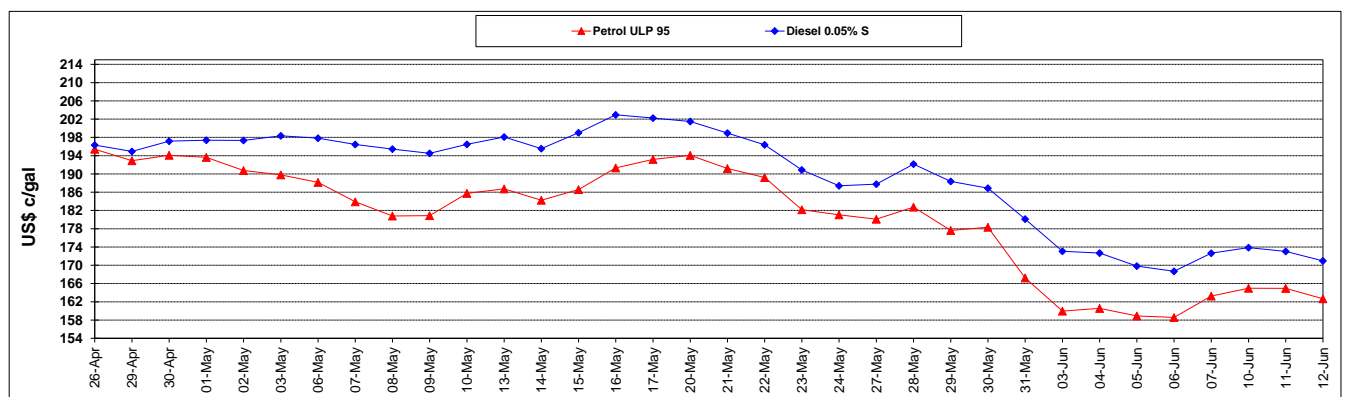
	PETROL 95	PETROL 93	DIESEL 0.05%	DIESEL 0.005%	ILL. PAR.
- MOVEMENT IN INTERNATIONAL PRODUCT PRICES	106.886	107.815	86.439	87.500	80.191
- MOVEMENT IN EXCHANGE RATE	(16.399)	(16.153)	(17.474)	(17.606)	(17.509)
AVERAGE UNIT OVER/(UNDER) RECOVERY 31/05/2019 - 12/09/2019	90.487	91.662	68.965	69.893	62.682

R/\$ EXCHANGE RATE - (R/\$14.7983 - 12/09/2019)

EXCHANGE RATE USED IN BASIC FUEL PRICE



INTERNATIONAL PRODUCT PRICES OF BASKET USED IN BASIC FUEL PRICE



BASIC FUEL PRICE IN SA CENTS PER LITRE

