

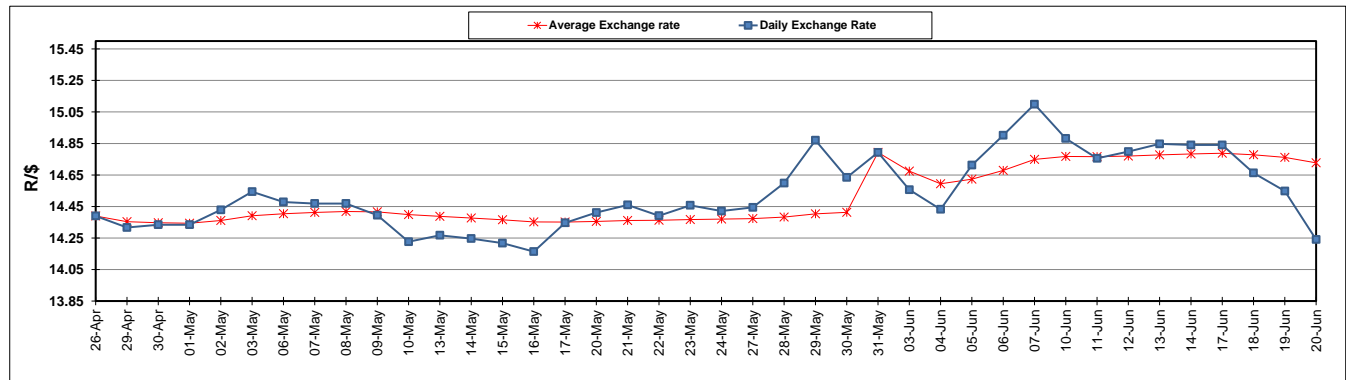
	PETROL 95 ULP	PETROL 93 ULP & LRP	DIESEL 0.05%	DIESEL 0.005%	ILL. PAR.
GAUTENG PUMP PRICE (SA c/l) AS FROM 05/06/2019	1 676.000	1 657.000	-	-	-
WHOLESALE PRICE (SA c/l) AS FROM 05/06/2019	-	-	1 521.280	1 527.680	973.678
SINGLE NATIONAL MAXIMUM RETAIL PRICE	-	-	-	-	1 241.000
BASIC FUEL PRICE - 20/06/2019 (SA c/l)	667.988	658.451	721.042	726.177	723.953
PRESS RELEASE CONTRIBUTION TO BFP 05/06/2019 - 20/06/2019 (SA c/l)	764.010	755.010	794.630	801.030	789.128
UNIT OVER/(UNDER) RECOVERY - 20/06/2019 (SA c/l)	96.022	96.559	73.588	74.853	65.175
AVERAGE BASIC FUEL PRICE 31/05/2019 - 20/06/2019	675.726	665.352	722.190	727.657	725.162
AVERAGE UNIT OVER/(UNDER) RECOVERY 31/05/2019 - 20/06/2019	90.916	92.290	70.440	71.373	62.366

### ANALYSIS MOVEMENT OF AVERAGE OVER/(UNDER) RECOVERY

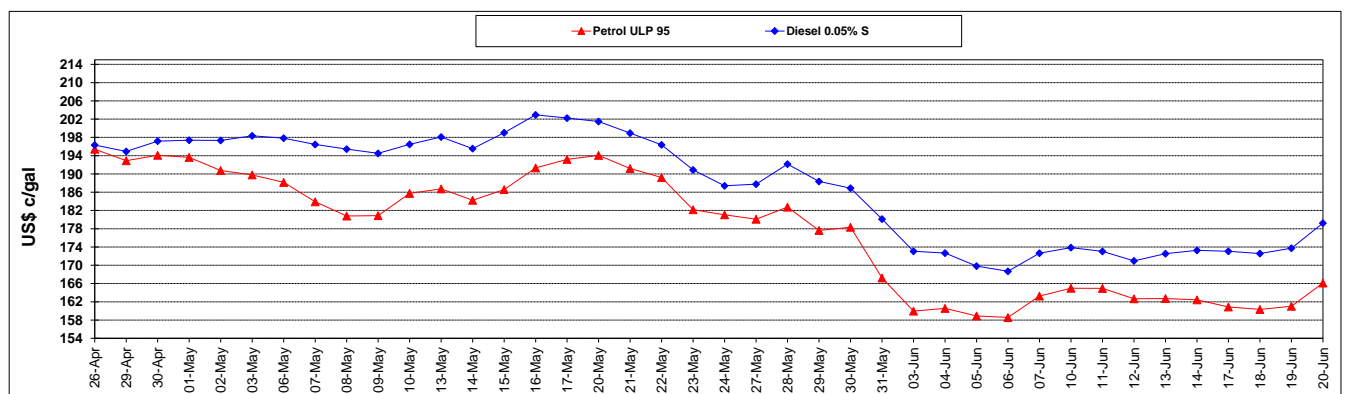
	PETROL 95	PETROL 93	DIESEL 0.05%	DIESEL 0.005%	ILL. PAR.
- MOVEMENT IN INTERNATIONAL PRODUCT PRICES	105.351	106.503	85.867	86.917	77.857
- MOVEMENT IN EXCHANGE RATE	(14.435)	(14.213)	(15.427)	(15.544)	(15.491)
AVERAGE UNIT OVER/(UNDER) RECOVERY 31/05/2019 - 20/06/2019	90.916	92.290	70.440	71.373	62.366

R/\$ EXCHANGE RATE - (R/\$14.2405 - 20/06/2019)

### EXCHANGE RATE USED IN BASIC FUEL PRICE



### INTERNATIONAL PRODUCT PRICES OF BASKET USED IN BASIC FUEL PRICE



### BASIC FUEL PRICE IN SA CENTS PER LITRE

