

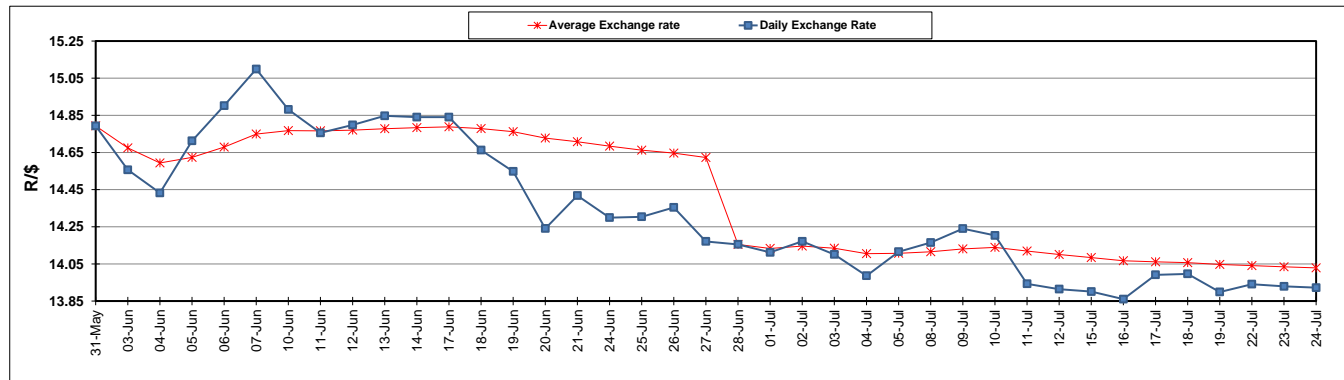
	PETROL 95 ULP	PETROL 93 ULP & LRP	DIESEL 0.05%	DIESEL 0.005%	ILL. PAR.
GAUTENG PUMP PRICE (SA c/l) AS FROM 03/07/2019	1 581.000	1 561.000	-	-	-
WHOLESALE PRICE (SA c/l) AS FROM 03/07/2019	-	-	1 446.500	1 451.900	916.678
SINGLE NATIONAL MAXIMUM RETAIL PRICE	-	-	-	-	1 165.000
BASIC FUEL PRICE - 24/07/2019 (SA c/l)	686.021	668.712	725.875	730.037	734.920
PRESS RELEASE CONTRIBUTION TO BFP 03/07/2019 - 24/07/2019 (SA c/l)	677.790	667.790	728.630	734.030	732.128
UNIT OVER/(UNDER) RECOVERY - 24/07/2019 (SA c/l)	(8.231)	(0.922)	2.755	3.993	(2.792)
AVERAGE BASIC FUEL PRICE 28/06/2019 - 24/07/2019	703.811	689.375	724.208	728.865	732.520
AVERAGE UNIT OVER/(UNDER) RECOVERY 28/06/2019 - 24/07/2019	(12.407)	(7.814)	14.843	15.744	8.608

ANALYSIS MOVEMENT OF AVERAGE OVER/(UNDER) RECOVERY

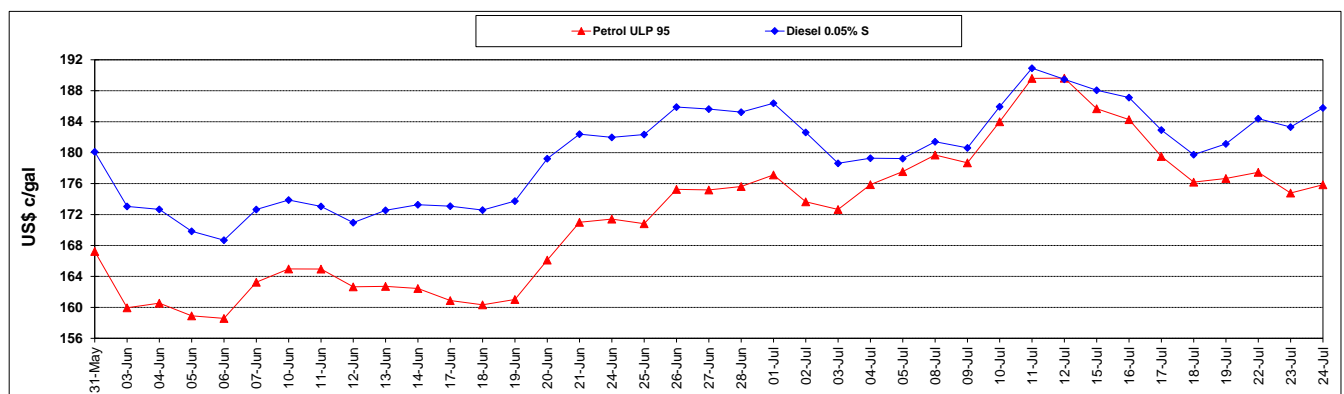
	PETROL 95	PETROL 93	DIESEL 0.05%	DIESEL 0.005%	ILL. PAR.
- MOVEMENT IN INTERNATIONAL PRODUCT PRICES	(42.208)	(37.002)	(15.821)	(15.117)	(22.408)
- MOVEMENT IN EXCHANGE RATE	29.801	29.189	30.664	30.861	31.016
AVERAGE UNIT OVER/(UNDER) RECOVERY 28/06/2019 - 24/07/2019	(12.407)	(7.814)	14.843	15.744	8.608

R/\$ EXCHANGE RATE - (R/\$13.9221 - 24/07/2019)

EXCHANGE RATE USED IN BASIC FUEL PRICE



INTERNATIONAL PRODUCT PRICES OF BASKET USED IN BASIC FUEL PRICE



BASIC FUEL PRICE IN SA CENTS PER LITRE

