

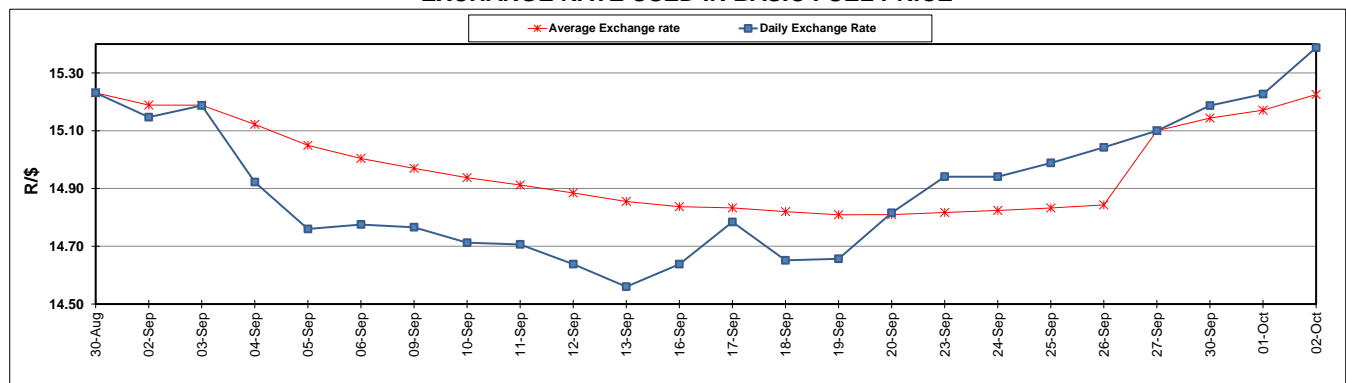
	PETROL 95 ULP	PETROL 93 ULP & LRP	DIESEL 0.05%	DIESEL 0.005%	ILL. PAR.
GAUTENG PUMP PRICE (SA c/l) AS FROM 02/10/2019	1,621.000	1,579.000	-	-	-
WHOLESALE PRICE (SA c/l) AS FROM 02/10/2019	-	-	1,484.210	1,488.610	961.678
SINGLE NATIONAL MAXIMUM RETAIL PRICE	-	-	-	-	1,228.000
BASIC FUEL PRICE - 02/10/2019 (SA c/l)	723.735	690.539	769.166	775.118	777.891
PRESS RELEASE CONTRIBUTION TO BFP 02/10/2019 - 02/10/2019 (SA c/l)	722.170	690.170	770.630	775.030	779.128
UNIT OVER/(UNDER) RECOVERY - 02/10/2019 (SA c/l)	(1.565)	(0.369)	1.464	(0.088)	1.237
AVERAGE BASIC FUEL PRICE 27/09/2019 - 02/10/2019	729.237	699.733	779.817	785.030	790.786
AVERAGE UNIT OVER/(UNDER) RECOVERY 27/09/2019 - 02/10/2019	(20.567)	(6.563)	(27.937)	(28.750)	(30.408)

ANALYSIS MOVEMENT OF AVERAGE OVER/(UNDER) RECOVERY

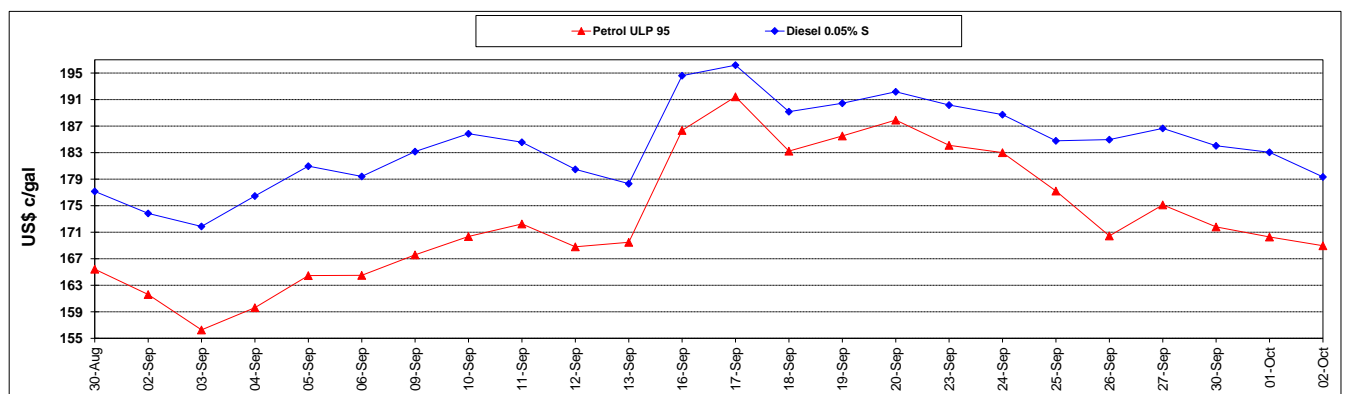
	PETROL 95	PETROL 93	DIESEL 0.05%	DIESEL 0.005%	ILL. PAR.
- MOVEMENT IN INTERNATIONAL PRODUCT PRICES	(2.266)	10.998	(8.366)	(9.049)	(10.562)
- MOVEMENT IN EXCHANGE RATE	(18.301)	(17.561)	(19.571)	(19.701)	(19.844)
AVERAGE UNIT OVER/(UNDER) RECOVERY 27/09/2019 - 02/10/2019	(20.567)	(6.563)	(27.937)	(28.750)	(30.408)

R/\$ EXCHANGE RATE - (R/\$15.3874 - 02/10/2019)

EXCHANGE RATE USED IN BASIC FUEL PRICE



INTERNATIONAL PRODUCT PRICES OF BASKET USED IN BASIC FUEL PRICE



BASIC FUEL PRICE IN SA CENTS PER LITRE

