

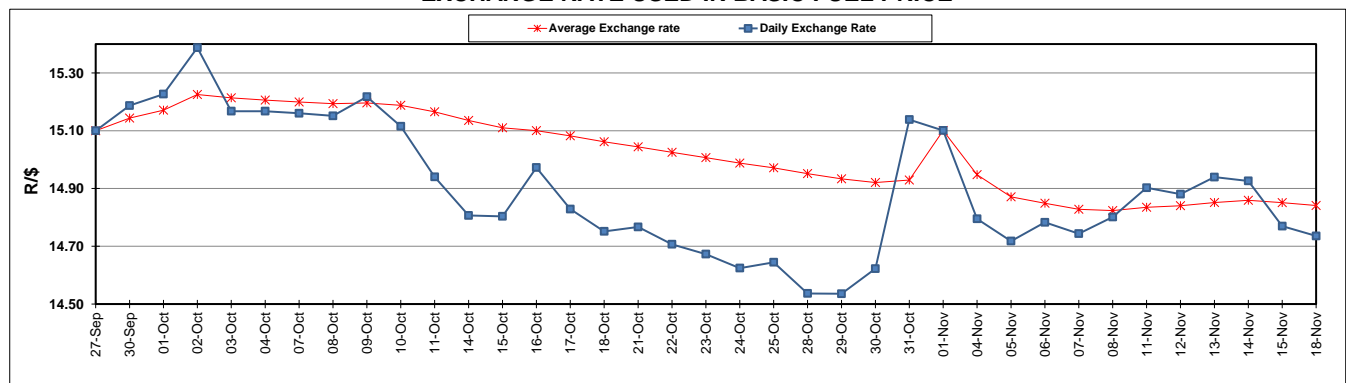
	PETROL 95 ULP	PETROL 93 ULP & LRP	DIESEL 0.05%	DIESEL 0.005%	ILL. PAR.
GAUTENG PUMP PRICE (SA c/l) AS FROM 06/11/2019	1,608.000	1,566.000	-	-	-
WHOLESALE PRICE (SA c/l) AS FROM 06/11/2019	-	-	1,468.210	1,474.610	938.678
SINGLE NATIONAL MAXIMUM RETAIL PRICE	-	-	-	-	1,197.000
BASIC FUEL PRICE - 18/11/2019 (SA c/l)	712.852	679.751	731.849	735.867	730.767
PRESS RELEASE CONTRIBUTION TO BFP 06/11/2019 - 18/11/2019 (SA c/l)	709.170	677.170	754.630	761.030	756.128
UNIT OVER/(UNDER) RECOVERY - 18/11/2019 (SA c/l)	(3.682)	(2.581)	22.781	25.163	25.361
AVERAGE BASIC FUEL PRICE 01/11/2019 - 18/11/2019	723.100	688.210	740.491	745.910	741.309
AVERAGE UNIT OVER/(UNDER) RECOVERY 01/11/2019 - 18/11/2019	(10.680)	(7.790)	18.139	18.620	20.569

ANALYSIS MOVEMENT OF AVERAGE OVER/(UNDER) RECOVERY

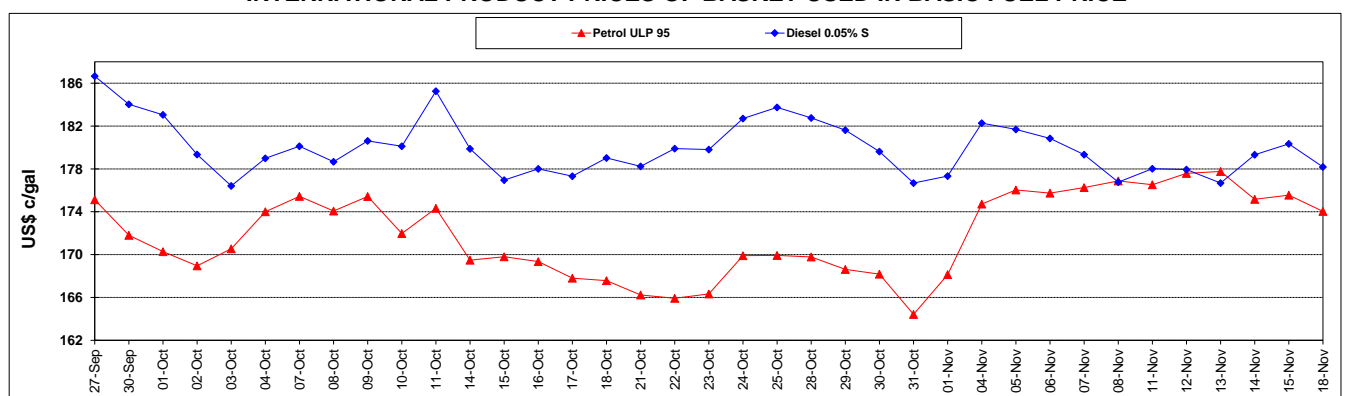
	PETROL 95	PETROL 93	DIESEL 0.05%	DIESEL 0.005%	ILL. PAR.
- MOVEMENT IN INTERNATIONAL PRODUCT PRICES	(14.968)	(11.871)	13.748	14.197	16.173
- MOVEMENT IN EXCHANGE RATE	4.288	4.081	4.391	4.423	4.396
AVERAGE UNIT OVER/(UNDER) RECOVERY 01/11/2019 - 18/11/2019	(10.680)	(7.790)	18.139	18.620	20.569

R/\$ EXCHANGE RATE - (R/\$14.7356 - 18/11/2019)

EXCHANGE RATE USED IN BASIC FUEL PRICE



INTERNATIONAL PRODUCT PRICES OF BASKET USED IN BASIC FUEL PRICE



BASIC FUEL PRICE IN SA CENTS PER LITRE

